

# IM5529 IceSpy Notion Pro

## Installation Manual

## Contents

Document History .....	5
1 SQL.....	6
1.1 Existing Microsoft SQL Instance.....	6
2 Installation .....	7
2.1 Notion Pro Server Components.....	7
2.1.1 Multi-Site Example.....	7
2.2 TCP/IP Ports and Addresses.....	8
2.3 Computer Specification.....	9
2.3.1 Windows 2008 R2 or 2012 R2 Server .....	9
2.3.2 Windows 7 Professional/Enterprise, Windows 10 Pro/Enterprise .....	9
2.3.3 Server using DHCP.....	9
2.3.4 Internet Information Services (IIS) Web server configuration.....	10
2.4 Windows Server 2008 R2 and Server 2012 R2 Pre-requisites .....	11
2.4.1 Checking if .Net 3.5.1 is enabled – Windows Server 2008 R2.....	11
2.4.2 Checking if .Net 3.5 or 4.5 is enabled – Server Running under Windows Server 2012 or 2012 R2 .....	13
2.4.3 Enabling .Net Framework 3.5.1 on Windows Server 2008 R2. ....	13
2.4.4 Enabling .Net Framework 3.5 and 4.5 on Windows Server 2012 R2 .....	14
3 Installation/Upgrade Procedure .....	15
3.1 Notion Pro Installation Preparation.....	15
3.1.1 W600A & W600B Installation Issues .....	15
3.1.2 W600B User Credentials .....	15
3.1.3 W600B SQL LAN Connection.....	15
3.2 Upgrades .....	15
3.2.1 Preparation .....	15
3.2.2 Upgrading .....	15
3.3 Step by Step Installation Procedure Sections .....	16
3.4 Windows 7 Installation procedure.....	17
3.4.1 Before you Start.....	17
3.4.2 Notion Pro Installation Procedure.....	17
3.4.3 Installing Notion Pro Server Components .....	18
3.4.4 Installing the Notion Pro Backup/Archive Tool .....	23
3.4.5 Installing Notion Pro Base Util .....	25
3.5 Windows 10 Installation procedure.....	27
3.5.1 Before you Start.....	27
3.5.2 Notion Pro Installation Procedure.....	27
3.5.3 Installing Notion Pro Server Components .....	28
3.5.4 Installing the Notion Pro Backup/Archive Tool .....	35
3.5.5 Installing Notion Pro Base Util .....	37
3.6 Windows Server 2008R2 Installation Procedure .....	39
3.6.1 Before you Start.....	39
3.6.2 Notion Pro Installation Procedure.....	39
3.6.3 Installing Notion Pro Server Components .....	40
3.6.4 Installing the Notion Pro Backup/Archive Tool .....	45
3.6.5 Installing the Notion Pro Base Util .....	47
3.6.6 Disabling Internet Explorer Enhanced Security Configuration .....	49
3.7 Windows Server 2012 and 2012 R2.....	50
3.7.1 Before you Start.....	50
3.7.2 Notion Pro Installation Procedure.....	50
3.7.3 Installing Notion Pro Server Components .....	51
3.7.4 Installing the Notion Pro Backup/Archive Tool .....	56
3.7.5 Installing the Notion Pro Base Util .....	57
3.7.6 Disabling Internet Explorer Enhanced Security Configuration .....	60
4 Firewall Configuration.....	62
5 New Database Configuration .....	63
5.1 Pre-Configuration Operations.....	63
5.1.1 W600A .....	64
5.1.2 W600B .....	64
5.1.3 W600B No SQL Servers Shown.....	64

5.1.4	SQL Servers Shown .....	66
5.2	Creating a New Database.....	66
6	Connection Test .....	69
6.1.1	Windows 10 Edge / Project Spartan .....	69
6.1.2	Default Administrator User.....	69
7	The Reports Folder.....	70
8	Exporting the Database.....	72
8.1	Notion Pro Export .....	72
8.1.1	Limitations.....	72
8.1.2	Notion Pro Export.....	72
9	Licensing .....	73
9.1	Online Activation (Basic Procedure).....	73
9.2	Manual Activation .....	74
9.3	Online Deactivation.....	75
10	Database – IMC Maintenance.....	76
10.1	Upgrade .....	76

**IMPORTANT**

**You must read Sections 1 and 2 before proceeding with the installation process.**

**Failure to comply with the instructions in these Sections may cause problems.**

Ensure you select the correct installation procedure for your Windows operating system.

See section **3.4** for Windows 7 installation procedure.

See section **3.5** for Windows 10 Installation procedure

See section **3.6** for Windows Server 2008 R2 installation procedure.

See section **3.7** for Windows Server 2012 and 2012 R2 installation procedure.

## Document History

Document Number: IM5529

Issue No.	Issue Date	Changes	By	Approved
1	15 September 2015	Initial version.	R. Bull	C. Burnell
2	14 October 2015	W600B Install path & SQL port; Windows 10	C. Burnell	D. Richardson
3	26 August 2016	Add additional port and DHCP information.	C. Burnell	D. Richardson
4	7 October 2016	Add information to installation procedure.	S.Haider	C. Burnell

# 1 SQL

Notion Pro uses Microsoft SQL, and is shipped in two variants:

- **W600A** is distributed with a SQL Express 2008 R2, (with tools), Bootstrapper, which will install SQL and Microsoft SQL Server Management Studio on the Notion Pro server.
- **W600B** is distributed without SQL, and is intended for installation where the customer wishes to use an existing SQL instance.

During **W600A** installation, the System Administrator password is set to P3nd13H0us3. This is done solely to provide a password without user interaction, Notion Pro does not use the SA account.

Restoring an SQL database requires all other connections to the database to be closed. If doing this from SSMS or similar, run the MS Services MMC (Microsoft Management Console) and make sure Apache 2.4 and all the Notion Pro services and stopped first; also, close any open SSMS edit windows connected to the database being restored.

## 1.1 Existing Microsoft SQL Instance

If there is an existing Microsoft SQL server, on the target server or LAN, that you wish to use for Notion Pro, then the following conditions must be met:

1. **Notion Pro W600B** must be used.
2. SQL Instance must be set to SQL login and Windows Authentication mode.
3. The installing Windows login should be a member of the Sys Admin role, and must have full administrative privileges on the SQL Instance.
4. SQL Server Browser service must be running during Notion Pro install and Notion Pro Config utility operation.
5. SQL Server Management Studio, (SSMS), must be installed.

## 2 Installation

### 2.1 Notion Pro Server Components

When installing the Notion Pro Server, the install will check for and install the following software:

- .Net framework 4
- .Net framework 3.5
- MS SQL 2008R2
- Notion Pro Data Service – includes Apache, PHP, plus various components and Notion Pro web files.

#### 2.1.1 Multi-Site Example

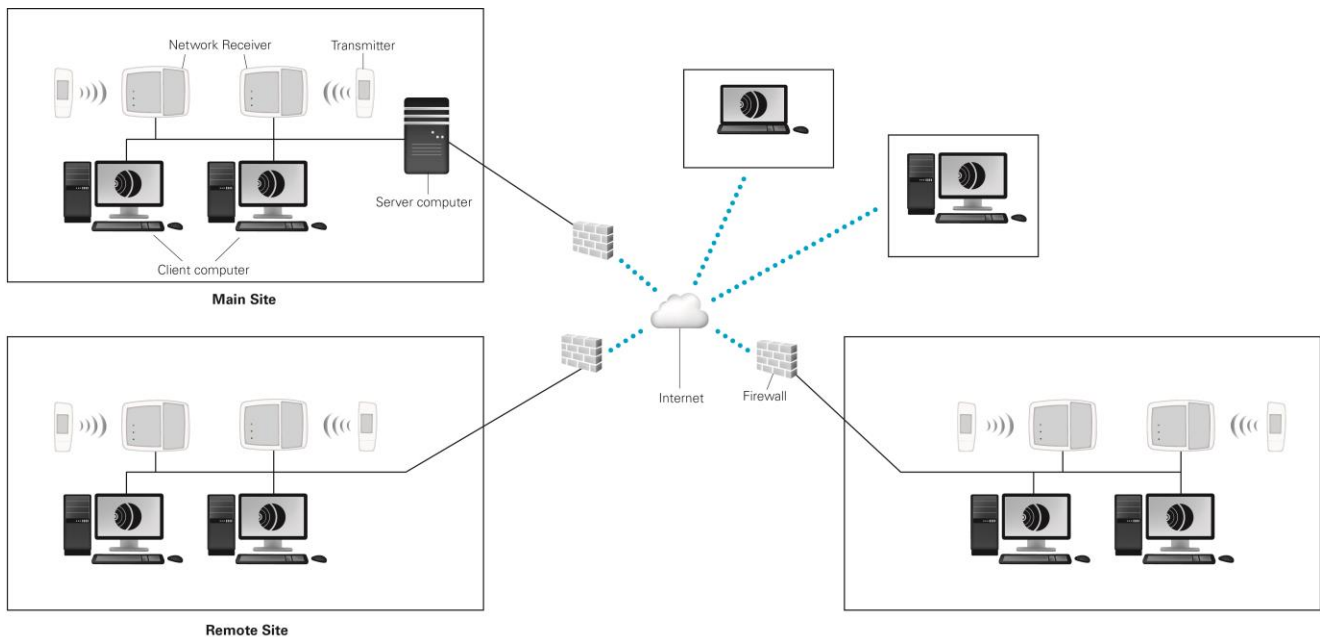


Figure 1

The above diagram shows a possible multi-site installation, (it assumes the customer has an inter-site VPN in place); in this scenario, the installing engineer would install the following components:

**Server:** Notion Pro Server Components.

The NotionProBackArchiveTool and NotionProBaseUtil will also need to be installed on a NotionPro Administrator's workstation or on the NotionPro server; the host machine will need network connection to the NotionPro server.

The Customer is responsible for installing browsers on the **Computers** and **Laptop**, and for configuring **Firewalls** to enable the SQL connection from the NotionProBackArchiveTool to the Notion Pro Server, inter-site communications and external HTTP access to the Server for the external **Computers**.

## 2.2 TCP/IP Ports and Addresses

If the Customer wishes to connect from remote base units where no intranet is in place, then the Customer must ensure that all Firewalls are configured to allow connections between the remote networks over the requisite TCP/IP ports.

There are no IANA registered Port numbers for Notion Pro, instead, it uses unassigned port numbers, (Ref: <http://www.iana.org/assignments/service-names-port-numbers/service-names-port-numbers.xml> as of 17/12/2012).

If a conflict arises on the host machine, Notion Pro TCP/IP ports can be configured during installation. For the majority of systems the default ports will suffice.

Where port numbers need to be changed, care should be taken to avoid well known and assigned port numbers. Consult the IANA website and do not use port numbers below 1024. If port numbers are altered, make a note of any changes and then modify the matching service data during database configuration.

The Debug ports are solely used by the Service Debug Viewer for IMC maintenance purposes, so again these can be altered without modifying the database. Debug port numbers are altered by editing the Hardware Services *setup.xml* file, found in the services Common Application Data Folder.

Service	WCF	Data	Command	Debug
Notion ProDataService		10997 TCP inbound		11004 TCP local to server
Notion ProArchiveService	8080 TCP local to server			11010 TCP local to server

\*If one of the ports included above is unavailable please provide an alternative in the right hand column.

The system will also require either port 1433 or Customer specified instance port number for a W600B installation, for connection to the Microsoft SQL server, 1434 for an SQL client install. Port 80 (http) is required for the Apache Server. These ports are all IANA registered port numbers, and should be available).

For Firewall rules purposes, the SQL ports require TCP and UDP, all other ports are TCP.



## 2.3 Computer Specification

IMC recommends the below computer specifications as a **minimum** to run Notion Pro.

### 2.3.1 Windows 2008 R2 or 2012 R2 Server

<b>Processor</b>	2.5 GHz or faster
<b>Ram</b>	8GB
<b>Hard-drive</b>	X2 250GB set up as RAID
<b>Media</b>	DVD-ROM drive
<b>Network</b>	1GB Ethernet network port

**Note:** Notion Pro W600A must NOT be installed on a Domain Controller. SQL Server security restrictions mean that the installation will usually fail.

### 2.3.2 Windows 7 Professional/Enterprise, Windows 10 Pro/Enterprise

**Note:** Notion Pro will not run on **Windows 7 Starter or Home Premium or Windows 10 Home or Mobile** due to the lack of access regarding network rights and user accounts.

Very small installations would typically consist of up to 25 transmitters, one Site, up to two Base Stations, and up to five users with LAN-only browser access. Notion Pro for such a Site may be installed on a dedicated Windows 7 Service Pack1 or later machine, or on a Windows 10 machine, with the specification below. The operating system must be a Professional or Enterprise variant.

<b>Processor</b>	2.5 GHz or faster
<b>Ram</b>	2GB (32-bit) 4GB (64-bit)
<b>Hard-drive</b>	250GB
<b>Media</b>	DVD-ROM drive
<b>Network</b>	1GB Ethernet network port

**Ensure that the host machine for Notion Pro has all the latest Windows updates before installing the Notion Pro software.**

**Failure to meet minimum computer specification may result in poor performance and incorrect operation.**

The Customer should provide a backup system, with Microsoft SQL integration, appropriate to their data protection requirements. The IMC Group strongly recommends the use of an appropriately rated uninterrupted power source, with automatic shutdown technology.

### 2.3.3 Server using DHCP

If the Notion Pro server machine is part of a domain, DHCP may be used; otherwise the machine **must** have a fixed IP address.

### 2.3.4 Internet Information Services (IIS) Web server configuration

The instructions below describe how to turn off the IIS (Internet information services) on a Windows 7 or Windows 10 machine and Windows servers.

#### 2.3.4.1 For Windows 7/Windows 10 Systems

1. Navigate to the '**Control Panel**'
2. Select '**Programs and features**'
3. Navigate to the left hand pane and select '**Turn Windows Features on or off**'
3. Clear 'Internet Information Services' and 'Internet Information Services Hostable Web Core'. See Figure 2 below.

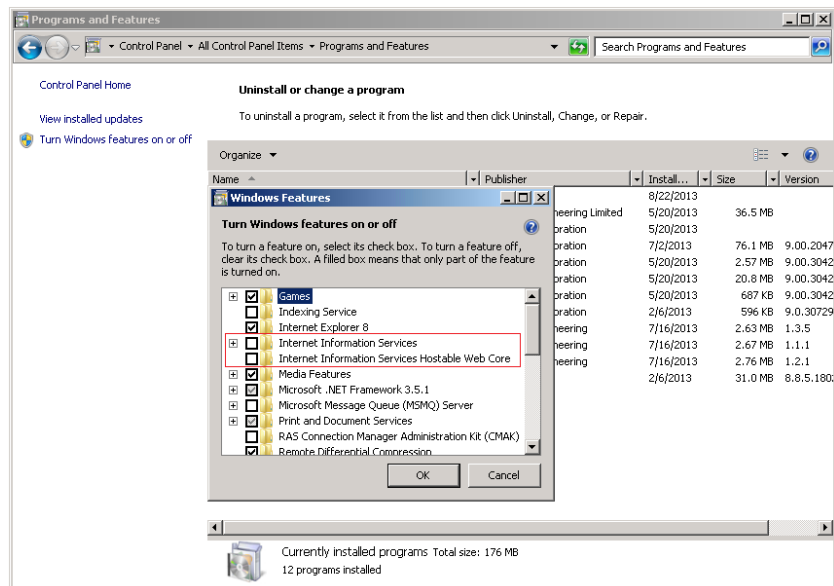



Figure 2

#### 2.3.4.2 For Windows 10 Systems

1. Select *Programs and Features* (right-hand mouse button on .
2. In the left-hand pane, select *Turns Windows features on or off*.
3. Ensure that 'Internet Information Services' and 'Internet Information Services Hostable Web Core' are clear. See Figure 3 below.

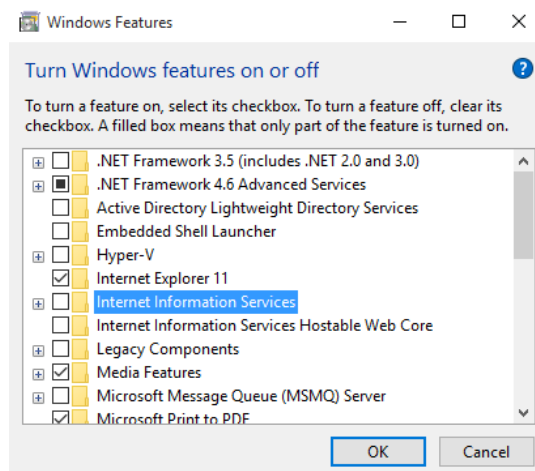


Figure 3

### 2.3.4.3 For Windows Server 2008 R2 Systems

1. Open 'Windows Server Manager' from the start menu
2. Click 'Roles' in the tree on the left
3. Click 'Remove roles' on the right (if Web server (IIS) is installed)
4. Uncheck 'Web Service (IIS)'
5. Click 'Remove Dependant Features'
6. Click 'Next'
7. Click 'Remove' (a system restart may be required after this process has completed). See Figure 4 below.

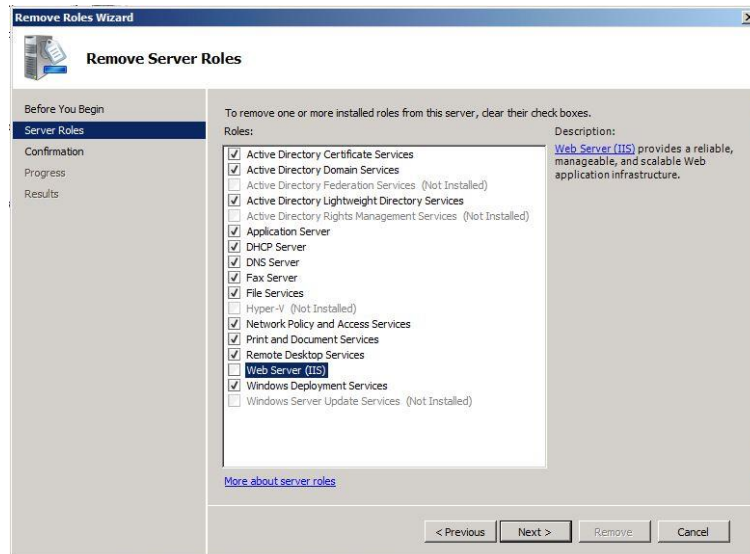


Figure 4

### 2.3.4.4 For Windows Server 2012 and 2012 R2 Systems

1. Open 'Windows Server Manager' by double-clicking  on the left of the task bar.
2. Click **Local Server** in the tree on the left
3. Scroll down to **ROLES AND FEATURES**.
4. Scroll within the **ROLES AND FEATURES** panel. If Web Server (IIS) is listed, select it then select Remove Role or Feature from the right-hand mouse button menu.
5. Click 'X' at top right of the window to close the Server Manager.

## 2.4 Windows Server 2008 R2 and Server 2012 R2 Pre-requisites

The installer includes bootstrappers for the Microsoft.Net Framework (3.5 and 4.5) and will install automatically, where required, during the install process. However, on machines running Windows Server 2008 or Server 2012 onwards, you must enable the .Net Framework manually on the server, prior to Notion Pro installation.

### 2.4.1 Checking if .Net 3.5.1 is enabled – Windows Server 2008 R2

The procedure below describes how to **check** if .Net 3.5.1 is enabled on the server:



1. Click the **Start** button.
2. Highlight 'Administrative Tools'.
3. Select 'Server Manager'.
4. Within the 'Server Manager' interface, click 'Features' (this will display all installed Features in the right hand pane).

5. Verify that '.Net Framework 3.5.1' is listed.

The instructions below describe how to enable the .Net Framework if it is not listed as stated above.

### 2.4.2 Checking if .Net 3.5 or 4.5 is enabled – Server Running under Windows Server 2012 or 2012 R2

The instructions below describe how to **check** if .Net 3.5 or 4.5 is enabled on the server.

1. Open 'Windows Server Manager' by double-clicking  on the left of the task bar.
2. Click  Local Server in the tree on the left.
3. Scroll down to **ROLES AND FEATURES**.
4. Scroll within the **ROLES AND FEATURES** panel. Check that the following features are listed:
  - .NET Framework 3.5 (includes .NET 2.0 and 3.0)
  - .NET Framework 3.5 Features
  - .NET Framework 4.5
  - .NET Framework 4.5 Features

The instructions below describe how to enable the .Net Framework if it is not listed as stated above.

### 2.4.3 Enabling .Net Framework 3.5.1 on Windows Server 2008 R2.

1. Click on the Start button.
2. Highlight 'Administrative Tools'
3. Select 'Server Manager'
4. Within the Server Manager Interface, select 'Add Features' (this will display a list of possible features)
5. In the Select Features Interface, 'expand .Net Framework 3.5.1 Features'
6. Once expanded you will see two tick boxes, one for .Net Framework 3.5.1 and the second for WCF Activation. Check the box next to '.Net Framework 3.5.1' and click **Next**

**Note:** If you do not expand '**.Net Framework 3.5.1 Features**' and check it, you will get a pop-up titled '**Add Features Wizard**' as shown, see Figure 5 below.

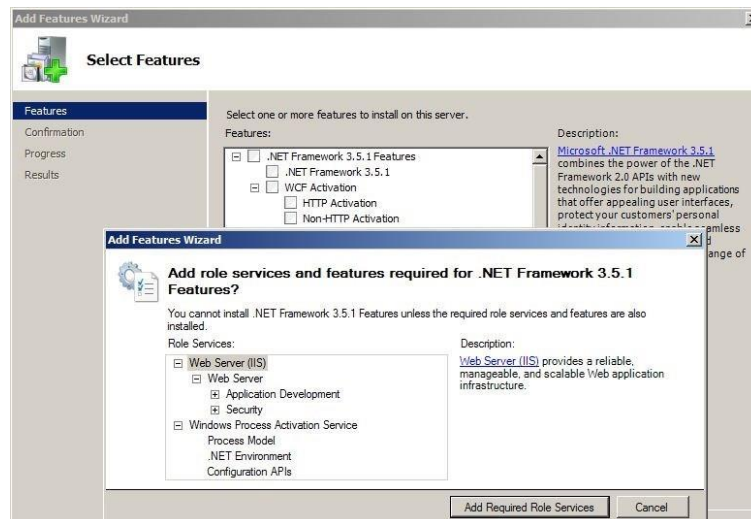


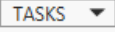

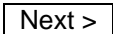



Figure 5

Click **Cancel** and expand **.Net Framework 3.5.1 Features** and then select the **Net Framework 3.5.1** tick box below it. You cannot install .NET Framework 3.5.1 Features unless the required role services and features are also installed.

In the **Confirm Installation Selections** interface, review the selections and then click **Install**. Allow the installation process to complete and then click **Close**. Where IMC is supplying a pre-built system, this can be done using the Server manager Microsoft Management Console.

#### 2.4.4 Enabling .NET Framework 3.5 and 4.5 on Windows Server 2012 R2

1. Open 'Windows Server Manager' by double-clicking  on the left of the task bar.
  2. Click  Local Server in the tree on the left.
  3. Select 'Add Roles and Features' from the  pull-down menu on the right.
  4. Select 'Features' from the list on the left. This displays a list of possible features in a list in the centre of the [Select features](#) page.
  5. Select from the .NET Framework 3.5 and .NET Framework 4.5 feature lists. Select the  arrowheads to expand the lists.
  6. Select the following features (and ONLY the following features):
    - .NET Framework 3.5 (includes .NET 2.0 and 3.0)
    - .NET Framework 4.5.
  7. Click  to go to the [Confirm installation selections](#) page.
- Note:** If the relevant install files are not found on the hard drive, you will be asked to "[Specify an alternate source path](#)"; if you do not know your install path you will need to contact your system administrator or IT support provider for assistance.
8. Click .
  9. When the install process is complete, click 'X' at top right of the window to close the Server Manager.

## 3 Installation/Upgrade Procedure

### 3.1 Notion Pro Installation Preparation

#### 3.1.1 W600A & W600B Installation Issues

Some antivirus programs may detect a false positive on the Notion Pro installer. If this happens, you should disable your antivirus program during the installation process.

#### 3.1.2 W600B User Credentials

If **Notion Pro W600B** is to operate a Microsoft SQL server running on a separate machine then Notion Pro will require Windows network login credentials to operate.

The login used for Notion Pro **MUST** have password set to Never expire. This login **MUST not** be the login used to install Notion Pro, using the same login causes database creation to fail (and would in any case result in a worse security situation post install, as the Notion Pro services would be left running as Administrator on the local system, and as an SQL Administrator on the SQL server).

Customers should **not** add this Notion Pro System login to their SQL Server. The login will be added automatically during Notion Pro installation (allowing the installation to add the Notion Pro service logins to the SQL server gives the best security situation, because the service login will only be granted access to the databases created for Notion Pro, with the minimum roles required to operate the system).

IMC recommends that customers create a network user login specifically for the Notion Pro system.

#### 3.1.3 W600B SQL LAN Connection

Various Notion Pro services and tools will need connectivity to the Microsoft SQL Server. The Customer **MUST** ensure connectivity to the SQL Server from the Notion Pro Server machine. This may include the necessity to create Firewall rules to allow TCP and UDP access on either port 1433 or Customer specified instance port number to the SQL Server (port 1434 for client install).

### 3.2 Upgrades

#### 3.2.1 Preparation

IMC recommends that customers back up all their data, prior to any major maintenance task, such as a system upgrade.

If new columns and/or tables need to be added to the database, then the Install will detect that the system is being upgraded and add the required objects.

**Note:** Unless specifically instructed to do so by IMC, do **NOT** uninstall Notion Pro components prior to an upgrade. Doing so may result in incorrect operation after the system has been upgraded

#### 3.2.2 Upgrading

To upgrade a Notion Pro Server installation, run the latest version of the Notion Pro Install on the existing host machine.

Do **NOT** attempt to upgrade a **Notion Pro W600A** system with **Notion Pro W600B**, or vice versa.

The upgrade process is largely the same as the primary system installation, except for as follows:

##### 3.2.2.1 SQL Express/.Net Framework

Where these are already installed, the Install will detect this and move on to the next installation step.

##### 3.2.2.2 Same Version Components

Where a component with the same version is already installed, the Install will detect this and either: give the user the option to keep or repair the current installation; or show an error that the component cannot be installed, this is normal, and should be ignored.

Unless you believe the current version of a component to be damaged, it is recommended that you keep the current version.

### 3.2.2.3 Service Shutdown

During Upgrade the installer will need to stop Notion Pro Services that are running, in order to upgrade the executable code. In these cases, you will be presented with dialog boxes similar to the ones below. See Figure 6 below.

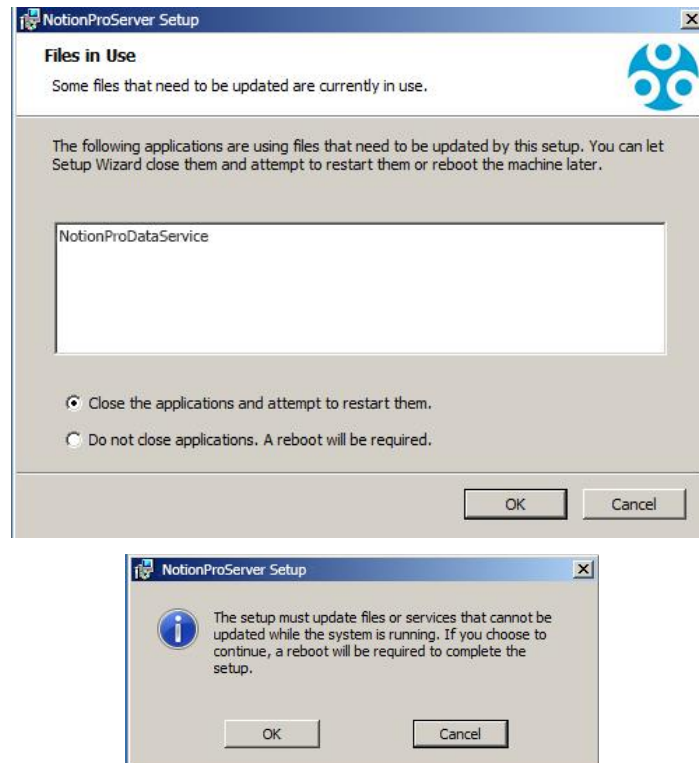


Figure 6

Keep the default selections and click **OK** to continue.

### 3.2.2.4 Settings

The Install will read your current settings, and use these values to populate the initial values of user entry fields.

## 3.3 Step by Step Installation Procedure Sections

Navigate to the correct section for your Operating System:

- Section 3.4 is for Windows 7 installations.
- Section 3.5 is for Windows 10 installations.
- Section 3.6 is for Windows Server 2008 and 2008R2 installations.
- Section 3.7 is for Windows Server 2012 and 20012R2 installations.



### 3.4 Windows 7 Installation procedure

You must follow each installation step carefully, and ensure you fully understand what you are changing if making a change during the installation, as an incorrect change could potentially render Notion Pro non-functional.

#### 3.4.1 Before you Start

- Make sure that the computer you are going to install Notion Pro on meets the minimum required specification – see section 2.3.2
- Ensure that the host machine for Notion Pro has all the latest Windows updates.
- Ensure that the host machine is NOT configured as a Web Server (IIS) – see section 2.3.4.1

#### 3.4.2 Notion Pro Installation Procedure

1. Insert the Notion Pro DVD and click run installation, if User Count Control is enabled click **Yes**, see Figure 7 below. If User Account Control is not enabled, skip this step.

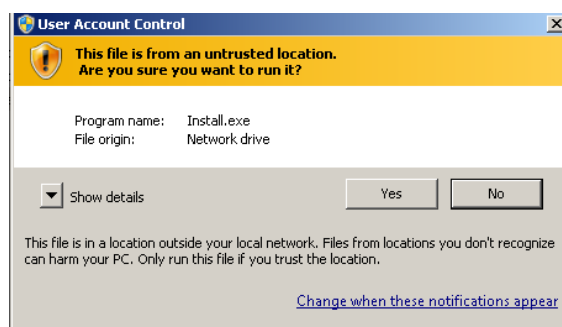


Figure 7

2. Click **Yes**. The **Notion Pro Install** window appears. If this is the Notion Pro Server select 'Install Notion Pro Server Components', see Figure 8 below.

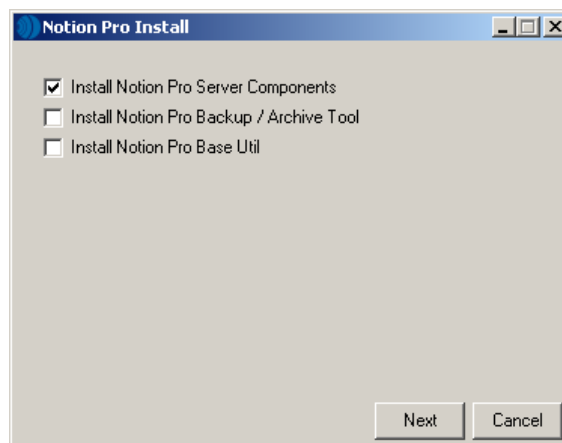
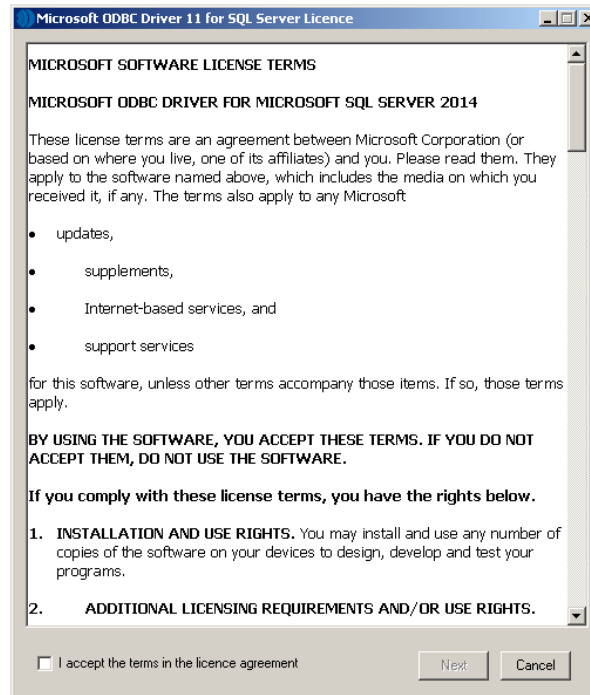


Figure 8

- If you wish to install the Notion Pro Backup/Archive tool then select the tick box.
- If Notion Pro Base Stations are to be configured from this machine, select 'Install Notion Pro Base Util'.

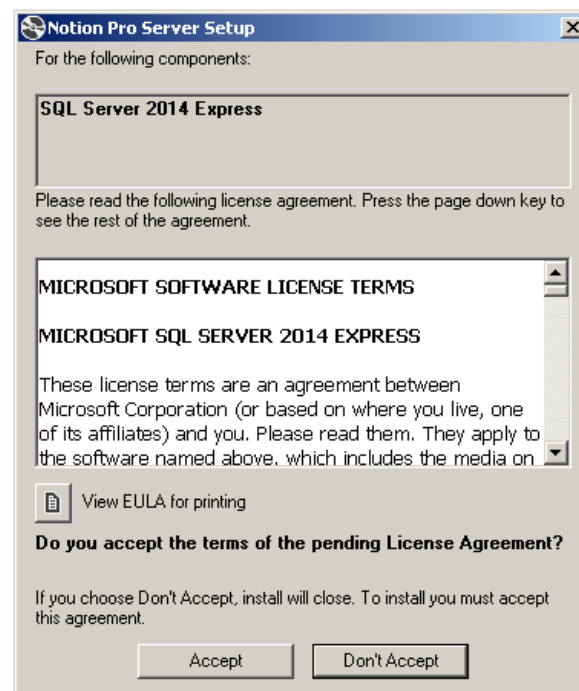
### 3.4.3 Installing Notion Pro Server Components

1. Click **Next** on the **Notion Pro Install** window. The **Microsoft ODBC Driver 11 for SQL Server 2014 Licence** window may appear, see **Figure 9** below.



**Figure 9**

2. Read the licence agreement, select 'I accept the terms in the licence agreement' then click **Next**
3. **W600A**, after a short delay, the Notion Pro Server Setup window will appear if SQL Express is not installed; this will show the SQL Server 2014 Express panel at the top. See **Figure 10** below.



**Figure 10**

4. Read the licence agreement, then click **Accept**. After a short delay, the **Visual C++ 2012 and 2015 Runtime Libraries (x86)** panel may appear. See **Figure 11** below.

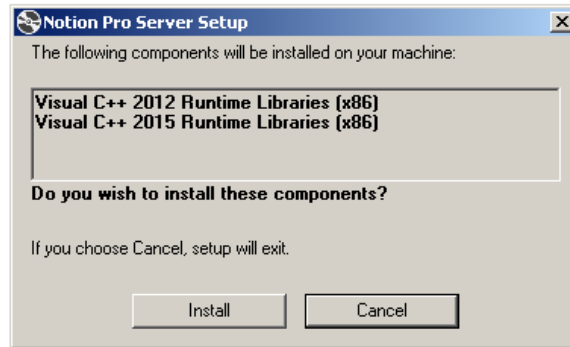


Figure 11

5. Click **Install**.
6. After a short delay, the **Microsoft Visual C++ 2012 Redistributable (x86)** window may appear, see Figure 12 below.

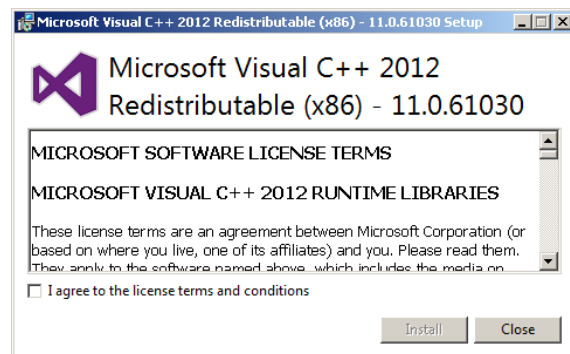


Figure 12

7. Read the licence agreement, select 'I agree to the licence terms and conditions' then click **Install**.
8. After a short delay, **Setup Successful** appears in the **Microsoft Visual C++ 2012 Redistributable (x86)** window, see Figure 13 below.

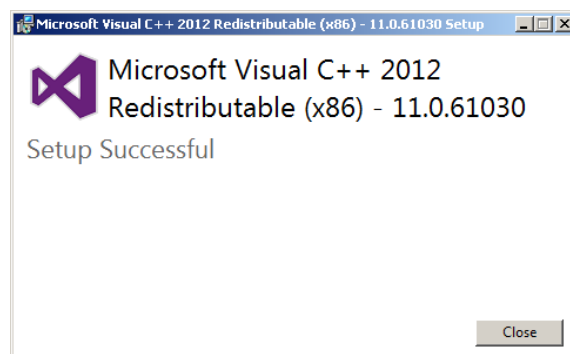


Figure 13

9. Click **Close**. After a short delay, the **Microsoft Visual C++ 2015 Redistributable (x86)** window may appear. Follow the steps which are similar to Microsoft C++ 2012 Redistributable (x86) installation.
10. Click **Close**. If SQL Express is to be installed, the **Notion Pro Server Setup** window appears, with a progress bar for SQL Server 2014 Express With Tools installation. SQL installation will take several minutes.
11. The **Notion Pro Server Setup** window displays Welcome to the Notion Pro Server Setup Wizard.
12. Click **Next**. The **End-User License Agreement** panel appears within the **Notion Pro Server Setup** window, see Figure 14 below.

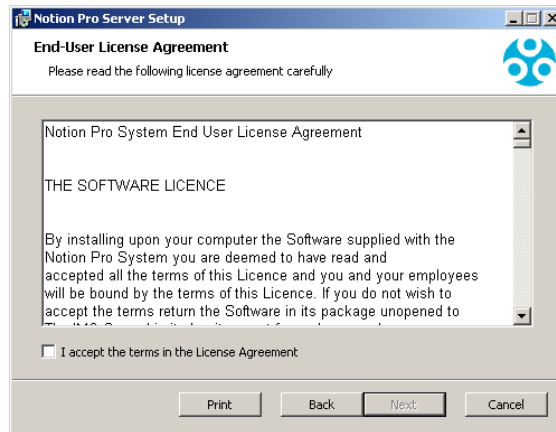


Figure 14

13. Read the licence agreement, select 'I accept the terms in the licence agreement' then click **Next**

14. **W600A** if installing W600A continue to 16 below.

**W600B** If installing W600B the Service Account dialog will now display. Enter the user credentials you have set up for the Notion Pro System to use and click **Check Credentials** then click **Next** You may only select 'Use Local Service Accounts' if Notion Pro is being installed on the SQL Server machine. See Figure 15 below.

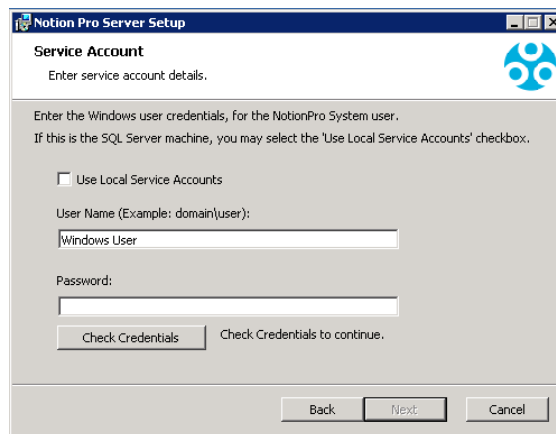


Figure 15

15. **W600B** The Destination Folder dialog shows, see Figure 16. If required, the installation folder can now be changed; clicking **Change...** display a folder browser dialog, allowing the destination folder to be changed. When completed click **Next**

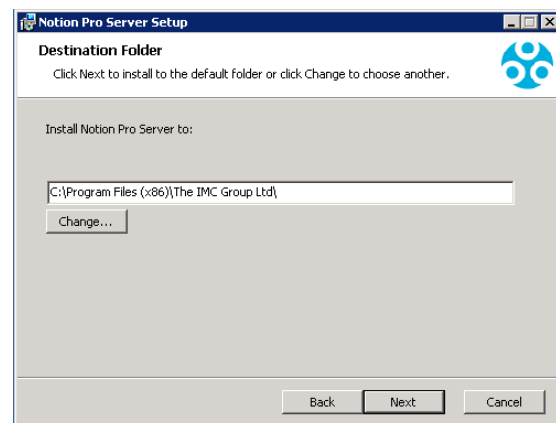


Figure 16

16. The next stage will proceed with installing the Notion Pro server Instance, click **Install** see Figure 17 below.

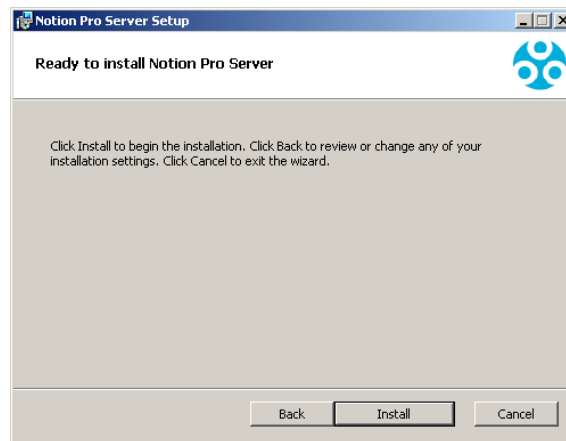


Figure 17

17. The **Installing Notion Pro Server** panel appears, then after a short delay the **Notion Pro Database Information** panel appears within a sub-window of the **Notion Pro Setup** window. **W600A** will show Figure 18 below, **W600B** will show Figure 19 below.

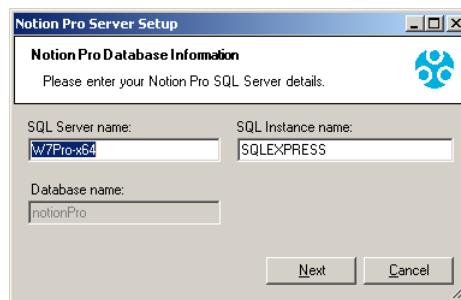


Figure 18

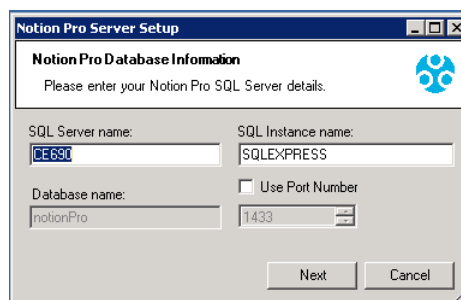


Figure 19

18. **W600A** leave the SQL Server name and SQL Instance name settings at their default values.

**W600B** enter the required SQL server name; and either enter the required instance name, or select 'Use Port number' and set the required instance's port number in the numeric control number. Click **Next** The **Notion Pro Location Information** panel appears within the **Notion Pro Setup** window. See Figure 20 below.

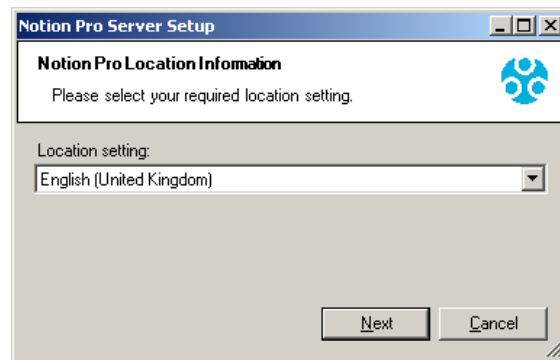


Figure 20

19. Select your location from within the 'Location setting:' list. Ensure the required locale is set correctly, otherwise date and times sent in SMS and Email messages may be incorrectly formatted.
20. Click **Next**. After a short delay, the **Windows Security Alert** window may appear with the 'Public networks' tick box pre-selected. See Figure 21 below.

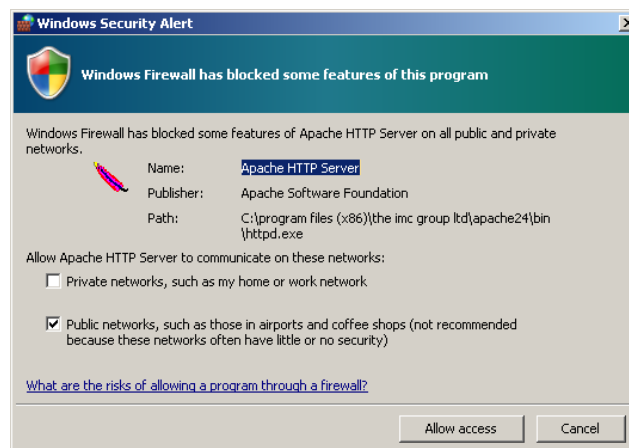


Figure 21

21. Leave the selected options in the **Windows Security Alert** window as they are. Click **Allow Access**.
22. After a short delay the Completed the Notion Pro Server Setup Wizard message is displayed within Notion Pro Server Setup window. Click **Finish**.

### 3.4.4 Installing the Notion Pro Backup/Archive Tool

1. Click **Next** on the **NotionProBackupArchiveTool** window. The **End-User License Agreement** panel appears. See Figure 22 below.

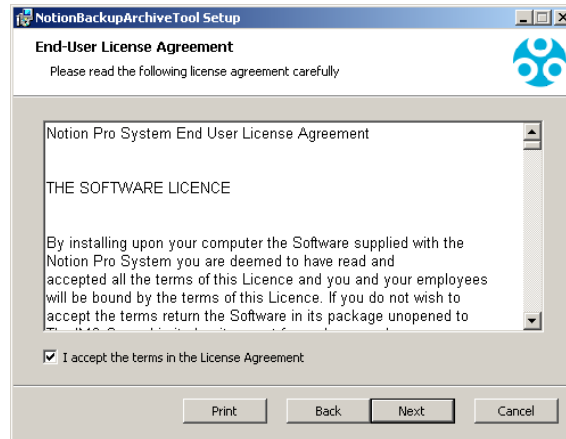


Figure 22

2. Read the licence agreement, select 'I accept the terms in the licence agreement' then click **Next**. The **Destination Folder** panel appears, see Figure 23 below.

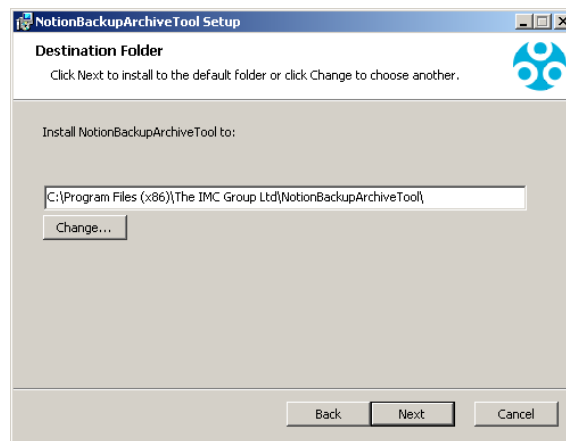


Figure 23

3. Click **Change...** to navigate to a destination folder for the Backup/Archive Tool or simply click **Next** to save to the default location (recommended).
4. The **Ready to install NotionProBackupArchiveTool** panel appears. Click **Install**.

After a short delay, the **Completed the NotionProBackupArchiveTool Setup Wizard** message is displayed, See Figure 24 below.

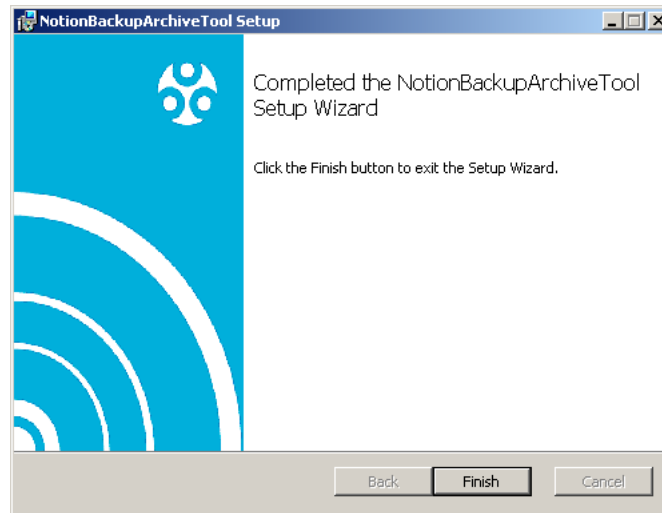


Figure 24

5. Notion Pro Backup Archive Tools setup is now complete. Click **Finish**. After a short delay the **NotionProBaseUtil Setup** window appears, see Figure 25 below.

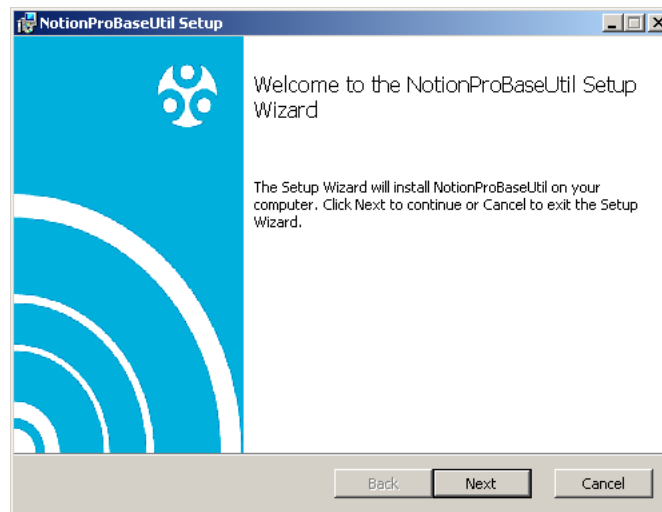


Figure 25



### 3.4.5 Installing Notion Pro Base Util

If Base Util has been selected, the next stage will begin the installation of the Notion Pro Base Util. This application is used to set the NotionPro server address and Base data port in, and the IP configuration of, base units.

1. Click **Next** on the **NotionProBaseUtil Setup** window. After a short delay the **End-User License Agreement** panel appears. See Figure 26 below.

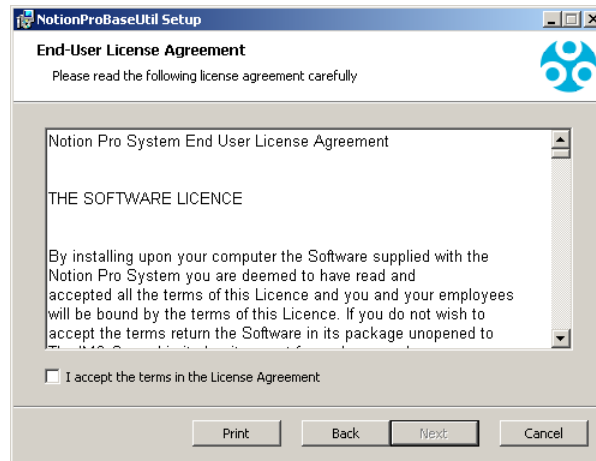


Figure 26

2. Read the Licence Agreement, tick 'I accept the terms in the Licence Agreement' then click **Next**. The **Destination Folder** panel appears. See Figure 27 below.

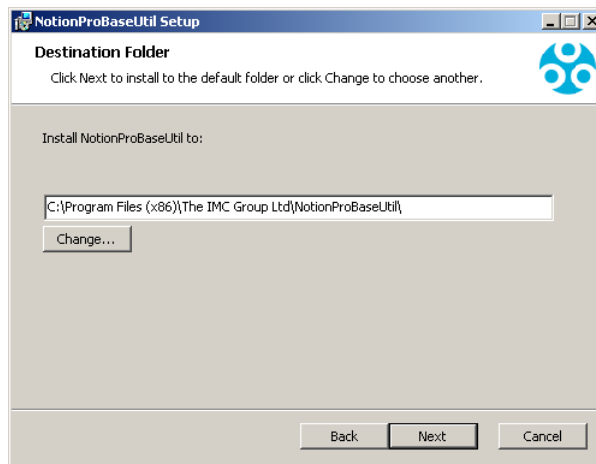


Figure 27

3. Click **Change...** to navigate to a destination folder for the Base Utility Service or simply click **Next** to save to the default location (recommended). The **Ready to install NotionProBaseUtil** panel appears. See Figure 28 below.

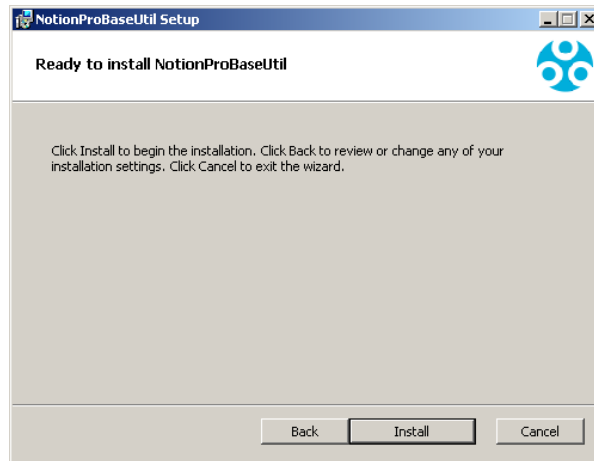


Figure 28

4. Click **Install**. After a short delay the Completed the NotionProBaseUtil Setup Wizard message appears. See Figure 29 below.

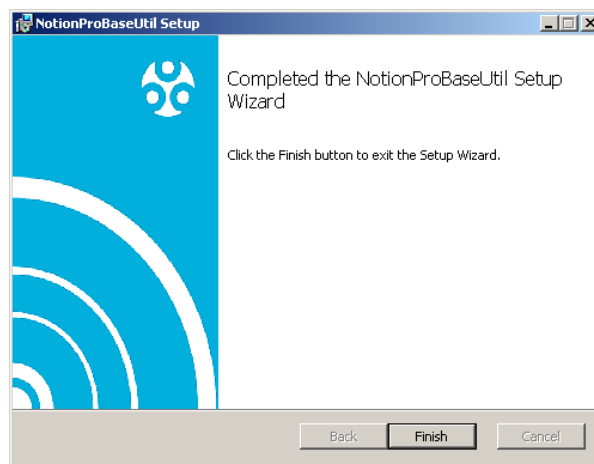


Figure 29

5. Notion Pro Base Utilities setup is now complete. Click **Finish**.
6. The **Notion Pro** panel appears, informing you that you need to re-boot your system to complete the installation. See Figure 30 below.

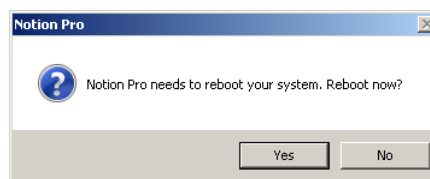


Figure 30

7. Click **Yes** to reboot the System.

Now check Section 4 for any required Firewall configuration, before proceeding to Section 5 to configure the database.

### 3.5 Windows 10 Installation procedure

You must follow each installation step carefully, and ensure you fully understand what you are changing if making a change during the installation, as an incorrect change could potentially render Notion Pro non-functional.

#### 3.5.1 Before you Start

- Make sure that the computer you are going to install Notion Pro on meets the minimum required specification – see section 2.3.2
- Ensure that the host machine for Notion Pro has all the latest Windows updates.
- Ensure that the host machine is NOT configured as a Web Server (IIS) – see section 2.3.4.2.

#### 3.5.2 Notion Pro Installation Procedure

1. Insert the Notion Pro DVD and click run installation, if User Count Control is enabled click **Yes**, see Figure 31 below. If User Account Control is not enabled, skip this step.

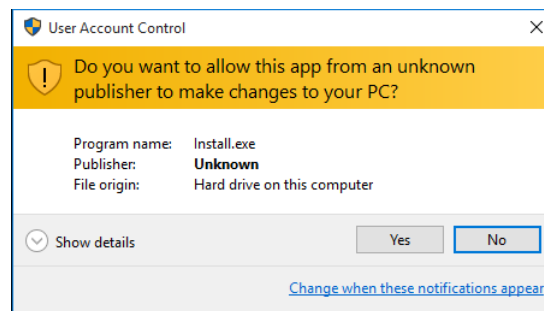


Figure 31

2. Click **Yes**. The **Notion Pro Install** window appears. If this is the Notion Pro Server select 'Install Notion Pro Server Components', see Figure 32 below.

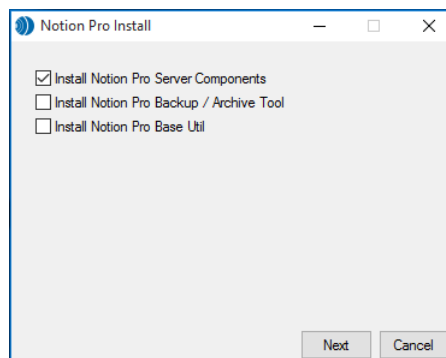


Figure 32

- If you wish to install the Notion Pro Backup/Archive tool then select the tick box.
- If Notion Pro Base Stations are to be configured from this machine, select 'Install Notion Pro Base Util'.

### 3.5.3 Installing Notion Pro Server Components

- Click **Next** on the **Notion Pro Install** window. The **Microsoft ODBC Driver 11 for SQL Server 2014 Licence** window may appear, see Figure 33 below.

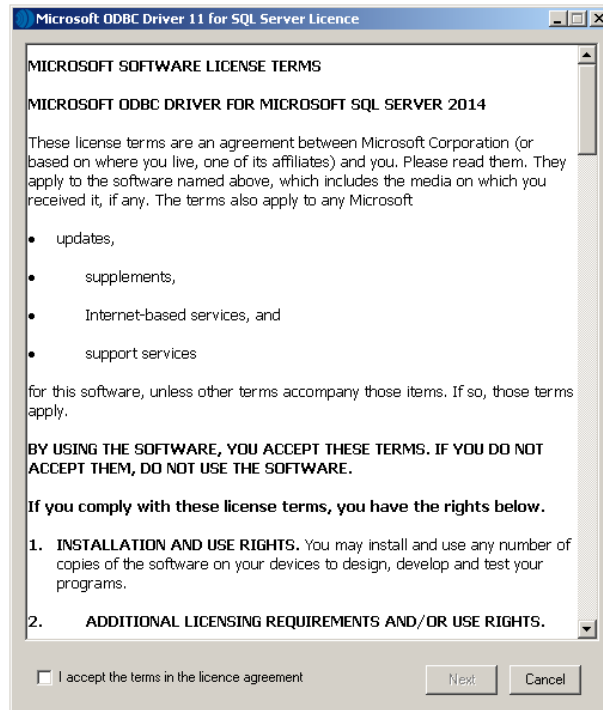


Figure 33

- Read the licence agreement, select 'I accept the terms in the licence agreement' then click **Next**. The **.Net Framework 3.5 SP1** licence window may appear, see Figure 34 below.

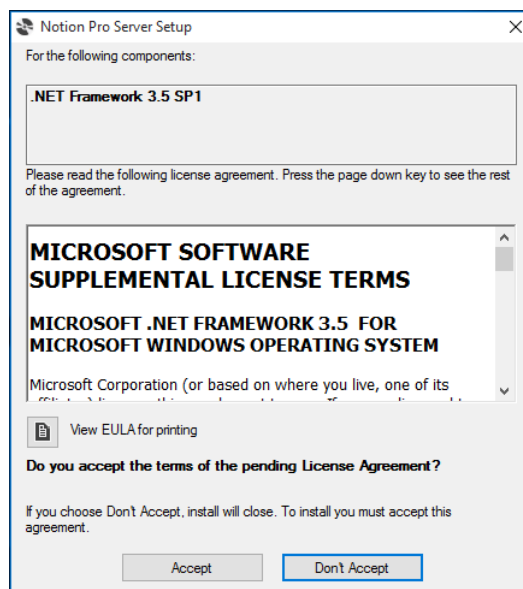


Figure 34

- Read the licence agreement, and click **Accept** to continue.
- W600A**, the Notion Pro Server Setup window will appear if SQL Express is not installed; this will show the SQL Server 2014 Express panel at the top. See Figure 35 below.



Figure 35

7. Read the licence agreement, then click **Accept**. After a short delay, the **Visual C++ 2012 and 2015 Runtime Libraries (x86)** panel may appear. See Figure 36 below.

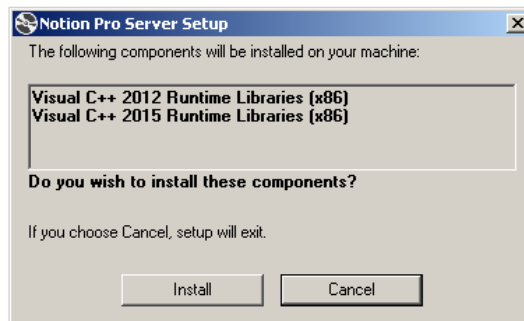


Figure 36

8. Click **Install**.
9. After a short delay, the **Microsoft Visual C++ 2012 Redistributable (x86)** window may appear, see Figure 37 below.



Figure 37

10. Read the licence agreement, select 'I agree to the licence terms and conditions' then click **Install**.
11. After a short delay, **Setup Successful** appears in the **Microsoft Visual C++ 2012 Redistributable (x86)** window, see Figure 38 below.



Figure 38

12. Click **Close**. After a short delay, the **Microsoft Visual C++ 2015 Redistributable (x86)** window may appear. Follow the steps which are similar to Microsoft C++ 2012 Redistributable (x86) installation.
13. Click **Close**. If SQL Express is to be installed, the **Notion Pro Server Setup** window appears, with a progress bar for SQL Server 2014 Express With Tools installation. SQL installation will take several minutes.

During SQL install, the **Windows Features** window may appear see Figure 39 below; select 'Download and Install the feature'. Downloading .NET Framework 3.5 is internet access speed dependant and can take several minutes.

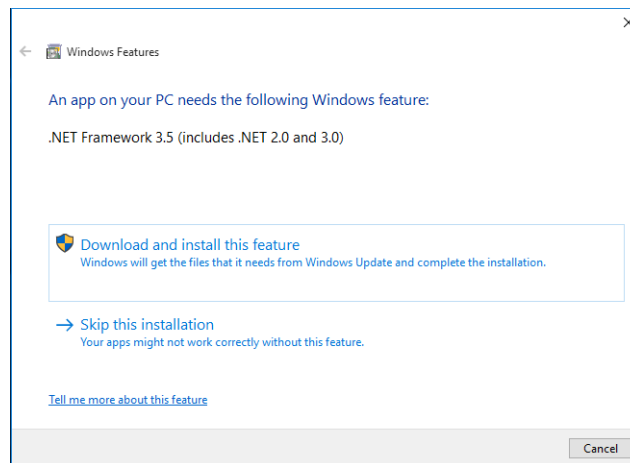


Figure 39

Once .NET Framework 3.5 installation has completed, the **Windows Features** window will display as Figure 40 below; click **Close** to continue and install SQL Server.

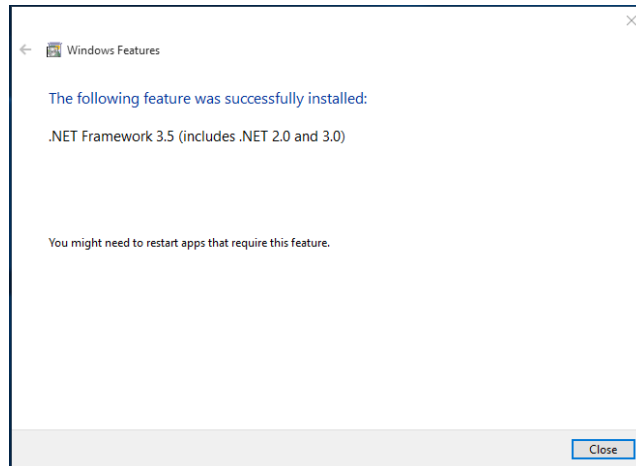


Figure 40

14. The **Notion Pro Server Setup** window displays Welcome to the Notion Pro Server Setup Wizard.
15. Click **Next**. The **End-User License Agreement** panel appears within the **Notion Pro Server Setup** window, see Figure 41 below.

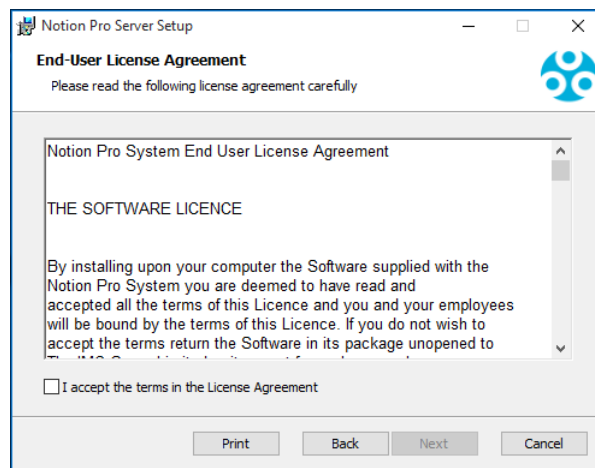


Figure 41

16. Read the licence agreement, select 'I accept the terms in the licence agreement' then click **Next**
17. **W600A** if installing W600A continue to 19 below.

**W600B** If installing W600B the Service Account dialog will now display. Enter the user credentials you have set up for the Notion Pro System to use and click **Check Credentials** then click **Next** You may only select 'Use Local Service Accounts' if Notion Pro is being installed on the SQL Server machine. See Figure 42 below.

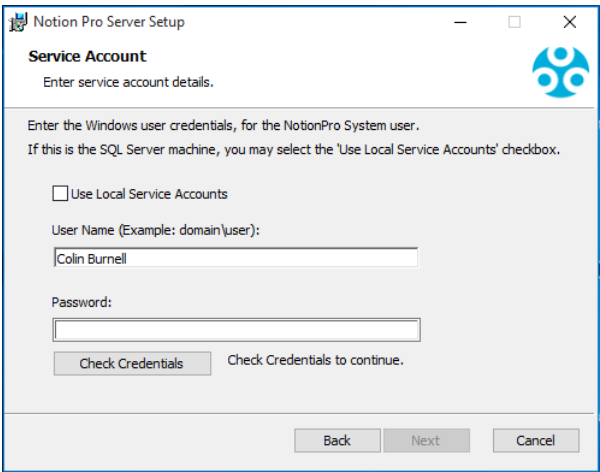


Figure 42



18. **W600B** The Destination Folder dialog shows, see Figure 43. If required, the installation folder can now be changed; clicking **Change...** display a folder browser dialog, allowing the destination folder to be changed. When completed click **Next**

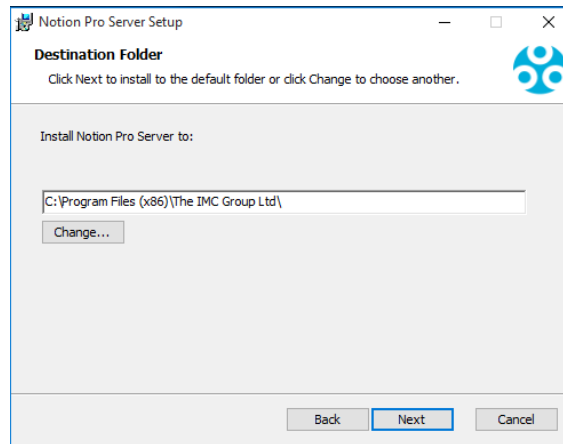


Figure 43

19. The next stage will proceed with installing the Notion Pro server Instance, click **Install** see Figure 44 below.

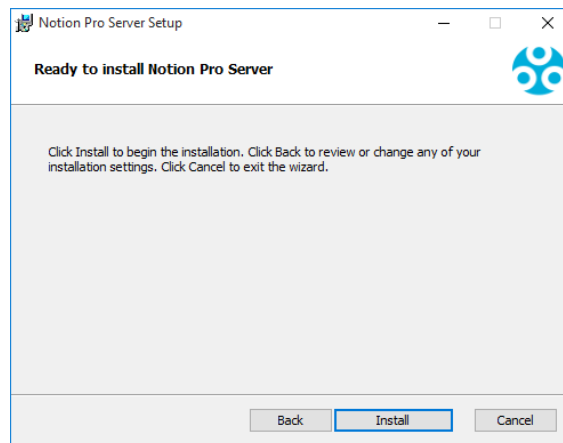


Figure 44

20. The **Installing Notion Pro Server** panel appears, then after a short delay the **Notion Pro Database Information** panel appears within a sub-window of the **Notion Pro Setup** window. **W600A** will show Figure 45 below, **W600B** will show Figure 46 below.

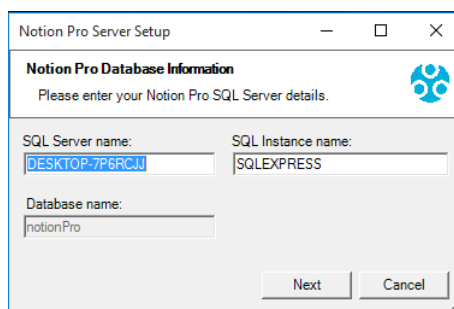


Figure 45

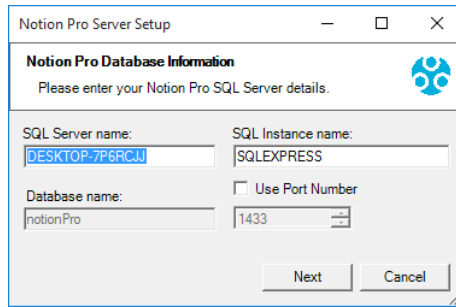


Figure 46

21. **W600A** leave the SQL Server name and SQL Instance name settings at their default values.

**W600B** enter the required SQL server name; and either enter the required instance name, or select 'Use Port number' and set the required instance's port number in the numeric control number. Click **Next**. The **Notion Pro Location Information** panel appears within the **Notion Pro Setup** window. See Figure 47 below.

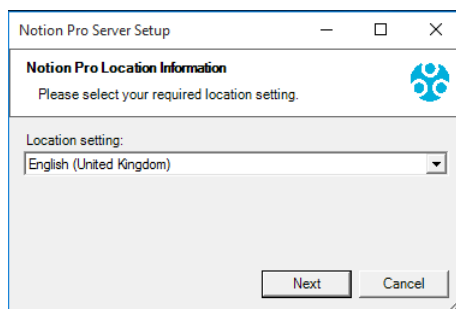


Figure 47

22. Select your location from within the 'Location setting:' list. Ensure the required locale is set correctly, otherwise date and times sent in SMS and Email messages may be incorrectly formatted.
23. Click **Next**. After a short delay, the **Windows Security Alert** window may appear with the 'Public networks' tick box pre-selected. See Figure 48 below.

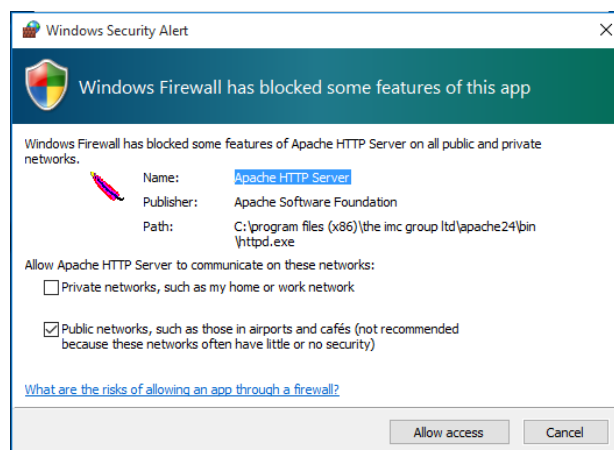


Figure 48

24. Leave the selected options in the **Windows Security Alert** window as they are. Click **Allow Access**.
25. After a short delay the **Completed the Notion Pro Server Setup Wizard** message is displayed within Notion Pro Server Setup window. Click **Finish**.

### 3.5.4 Installing the Notion Pro Backup/Archive Tool

26. Click **Next** on the **NotionProBackupArchiveTool** window. The **End-User License Agreement** panel appears. See Figure 49 below.

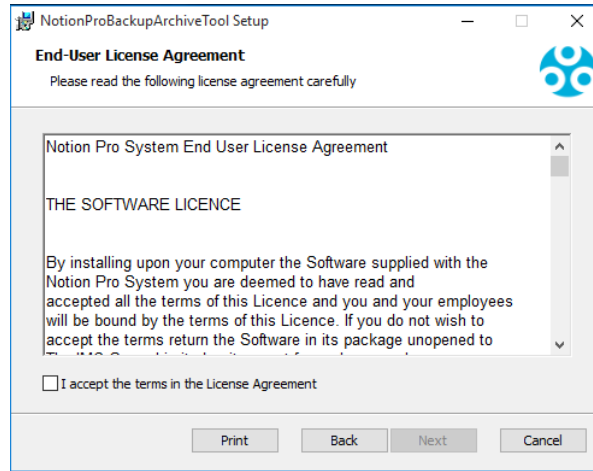


Figure 49

27. Read the licence agreement, select 'I accept the terms in the licence agreement' then click **Next**. The **Destination Folder** panel appears, see Figure 50 below.

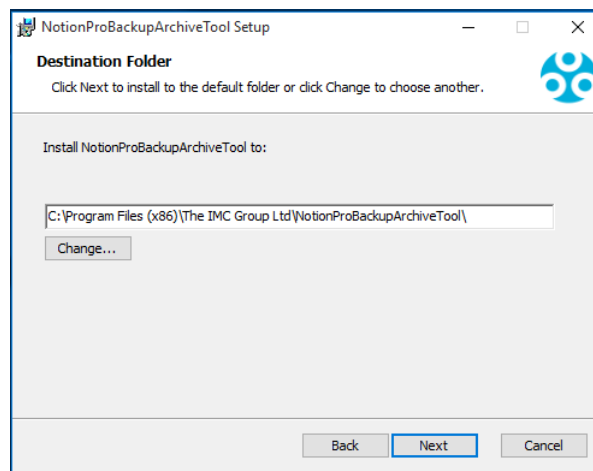


Figure 50

28. Click **Change...** to navigate to a destination folder for the Backup/Archive Tool or simply click **Next** to save to the default location (recommended).
29. The **Ready to install NotionProBackupArchiveTool** panel appears. Click **Install**.

After a short delay, the **Completed the NotionProBackupArchiveTool Setup Wizard** message is displayed, See Figure 51 below.

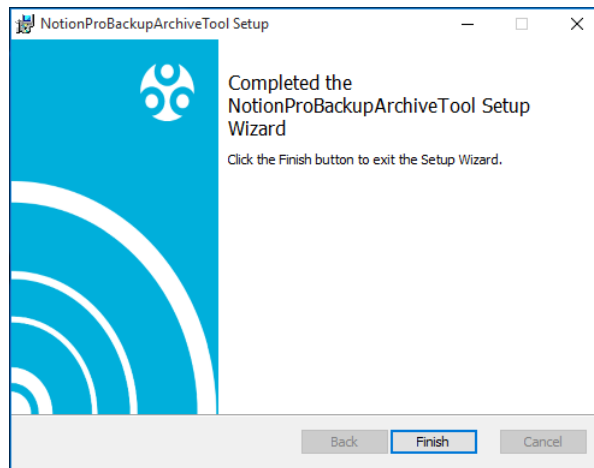


Figure 51

30. Notion Pro Backup Archive Tools setup is now complete. Click **Finish**. After a short delay the **NotionProBaseUtil Setup** window appears, see Figure 52 below.

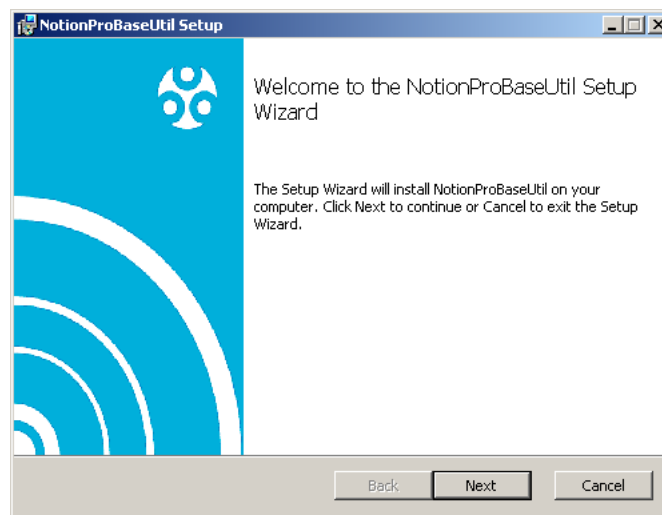


Figure 52

### 3.5.5 Installing Notion Pro Base Util

If Base Util has been selected, the next stage will begin the installation of the Notion Pro Base Util. This application is used to set the NotionPro server address and Base data port in, and the IP configuration of, base units.

31. Click **Next** on the **NotionProBaseUtil Setup** window. After a short delay the **End-User License Agreement** panel appears. See Figure 53 below.

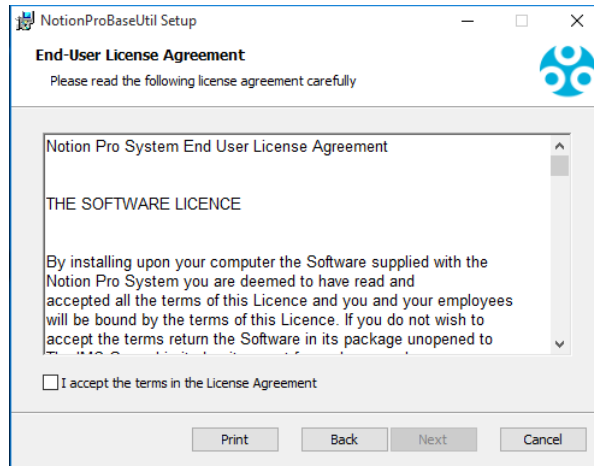


Figure 53

32. Read the Licence Agreement, tick 'I accept the terms in the Licence Agreement' then click **Next**. The **Destination Folder** panel appears. See Figure 54 below.

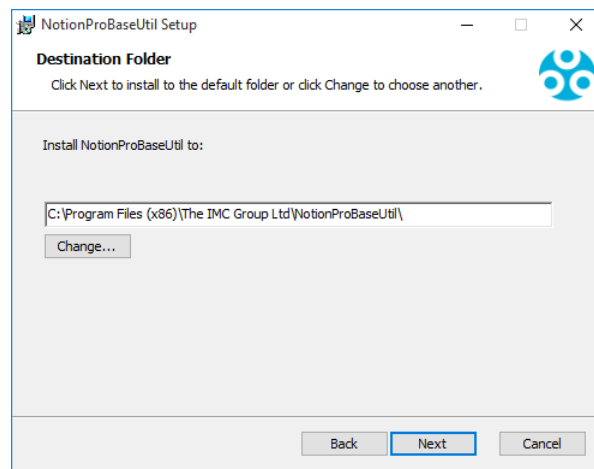


Figure 54

33. Click **Change...** to navigate to a destination folder for the Base Utility Service or simply click **Next** to save to the default location (recommended). The **Ready to install NotionProBaseUtil** panel appears. See Figure 55 below.

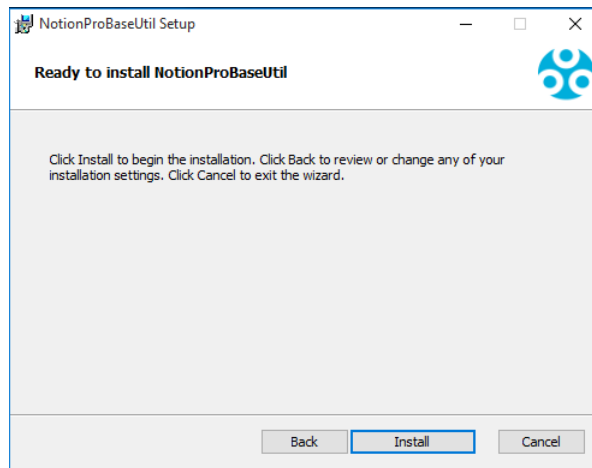


Figure 55

34. Click **Install**. After a short delay the Completed the NotionProBaseUtil Setup Wizard message appears. See Figure 56 below.

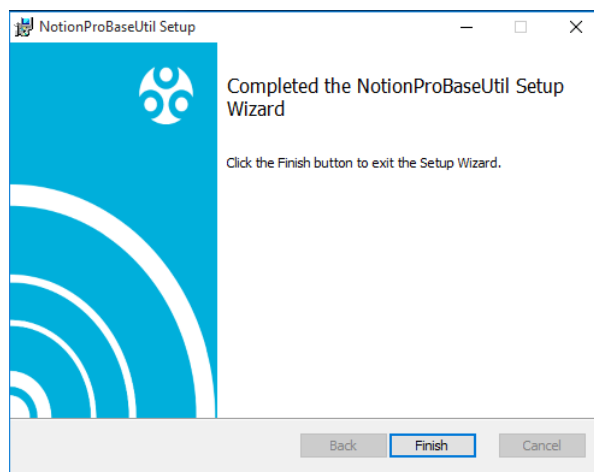


Figure 56

35. Notion Pro Base Utilities setup is now complete. Click **Finish**.
36. The **Notion Pro** panel appears, informing you that you need to re-boot your system to complete the installation. See Figure 57 below.

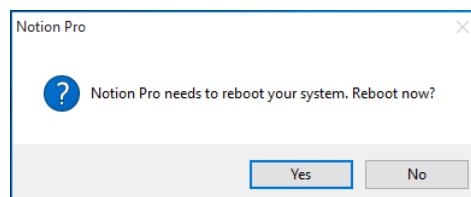


Figure 57

37. Click **Yes** to reboot the System.

Now check Section 4 for any required Firewall configuration, before proceeding to Section 5 to configure the database.

### 3.6 Windows Server 2008R2 Installation Procedure

You must follow each installation step carefully, and ensure you fully understand what you are changing if making a change during the installation, as an incorrect change could potentially render Notion Pro non-functional.

#### 3.6.1 Before you Start

- Make sure that the computer you are going to install Notion Pro on meets the minimum required specification – see section 2.3.1.
- Ensure that the host Server machine for Notion Pro has all the latest Windows updates.
- Ensure that the host Server machine is NOT configured as a Web Server (IIS) – see section 2.3.4.2
- Ensure that .Net Framework 3.5.1 is enabled the host Server machine – see section 2.4.1

#### 3.6.2 Notion Pro Installation Procedure

1. Insert the Notion Pro DVD and click run installation, if User Account Control is enabled click **Next**. See Figure 58 below. If User Account Control is not enabled, skip this step.

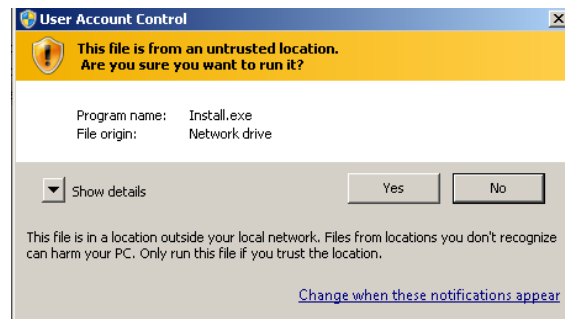


Figure 58

2. Click **Yes**. The **Notion Pro Install** window appears. If this is the Notion Pro Server select 'Install Notion Pro Server Components', see Figure 59 below.

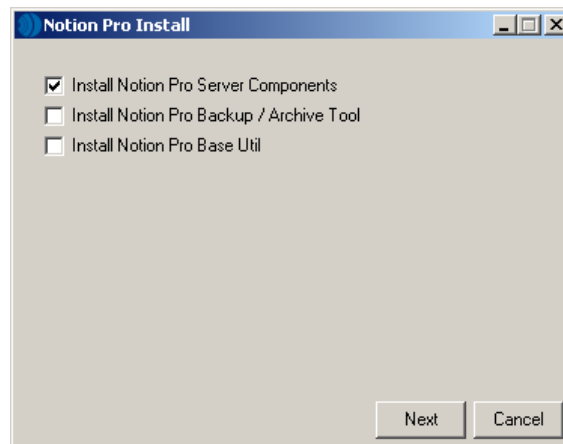


Figure 59

- If you wish to install the Notion Pro Backup/Archive tool then select the tick box.
- If Notion Pro Base Stations (Network Receivers) are to be controlled from this machine, select 'Install Notion Pro Base Util'.

### 3.6.3 Installing Notion Pro Server Components

1. Click **Next** on the **Notion Pro Install** window. The **Microsoft ODBC Driver 11 for SQL Server 2014 Licence** window may appear, see Figure 60 below.

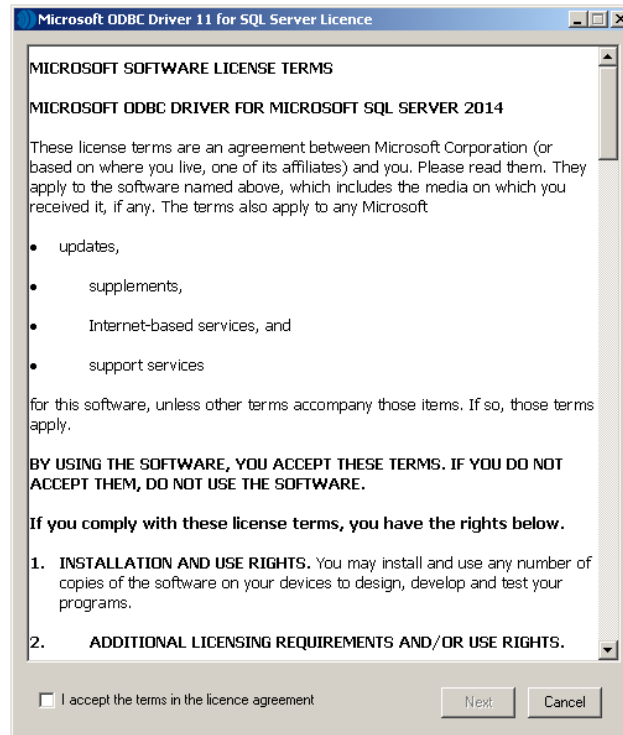


Figure 60

2. Read the licence agreement, select 'I accept the terms in the licence agreement' then click **Next**
3. **W600A**, after a short delay, the Notion Pro Server Setup window will appear if SQL Express is not installed; this will show the SQL Server 2014 Express panel at the top. See Figure 61 below.

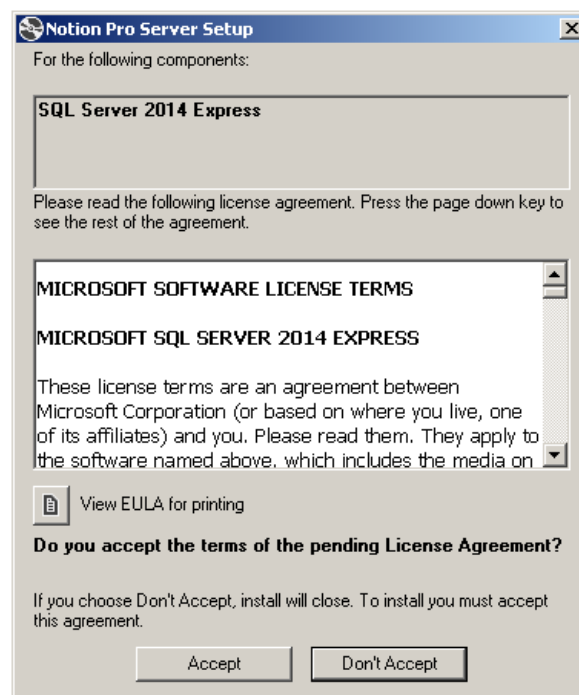


Figure 61



4. Read the licence agreement, then click **Accept**. After a short delay, the **Visual C++ 2012 and 2015 Runtime Libraries (x86)** panel may appear. See Figure 62 below.

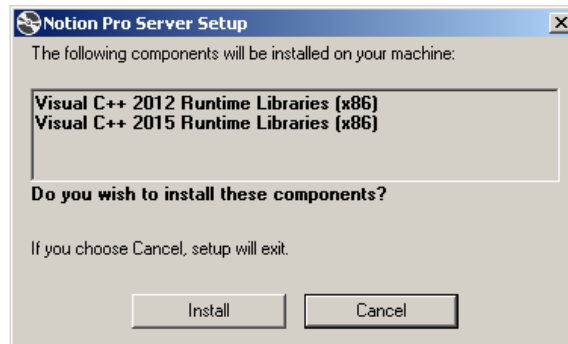


Figure 62

5. Click **Install**. After a short delay, the **Microsoft Visual C++ 2012 Redistributable (x86)** window may appear, see Figure 63 below.

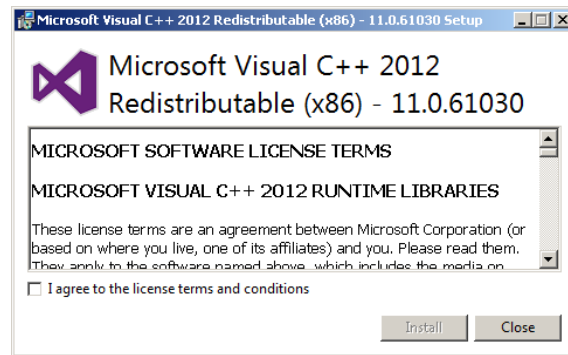


Figure 63

6. Read the licence agreement, select 'I agree to the licence terms and conditions' then click **Install**.
7. After a short delay, **Setup Successful** appears in the **Microsoft Visual C++ 2012 Redistributable (x86)** window, see Figure 64 below.

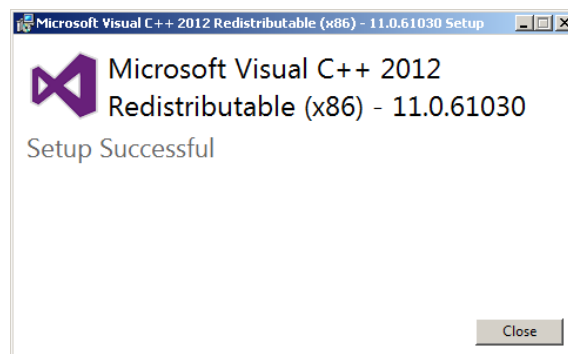


Figure 64

8. Click **Close**. After a short delay, the **Microsoft Visual C++ 2015 Redistributable (x86)** window may appear. Follow the steps which are similar to Microsoft C++ 2012 Redistributable (x86) installation.
9. Click **Close**. If SQL Express is to be installed, the **Notion Pro Server Setup** window appears, with a progress bar for SQL Server 2014 Express With Tools installation. SQL installation will take several minutes.
10. The **Notion Pro Server Setup** window displays **Welcome to the Notion Pro Server Setup Wizard**.
11. Click **Next**. The **End-User License Agreement** panel appears within the **Notion Pro Server Setup** window, see Figure 65 below.

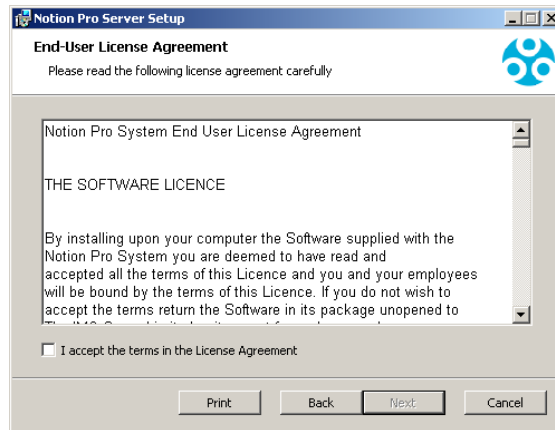


Figure 65

12. Read the licence agreement, select 'I accept the terms in the licence agreement' then click **Next**

13. **W600A** if installing W600A continue to step 15 below.

**W600B** If installing W600B the Service Account dialog will now display. Enter the user credentials you have set up for the Notion Pro System to use and click **Check Credentials** then click **Next**. You may only select 'Use Local Service Accounts' if Notion Pro is being installed on the SQL Server machine. See Figure 66 below.

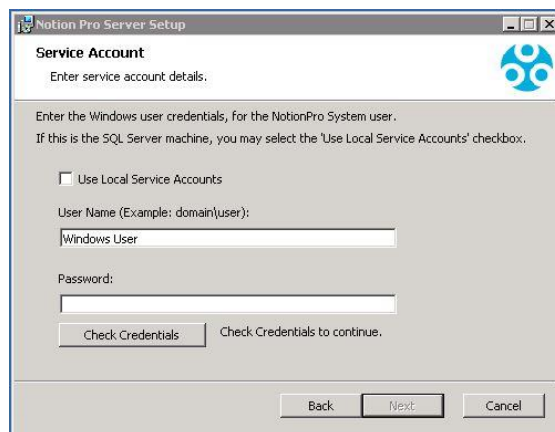


Figure 66

14. **W600B** The Destination Folder dialog shows, see Figure 67. If required, the installation folder can now be changed; clicking **Change...** display a folder browser dialog, allowing the destination folder to be changed. When completed click **Next**

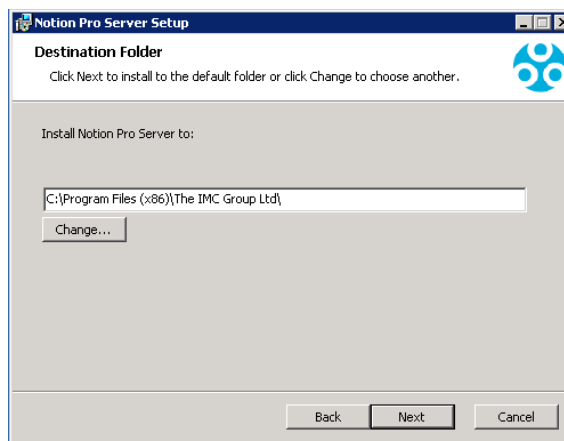


Figure 67

15. The next stage will proceed with installing the Notion Pro server Instance, click **Install**. See Figure 68 below.

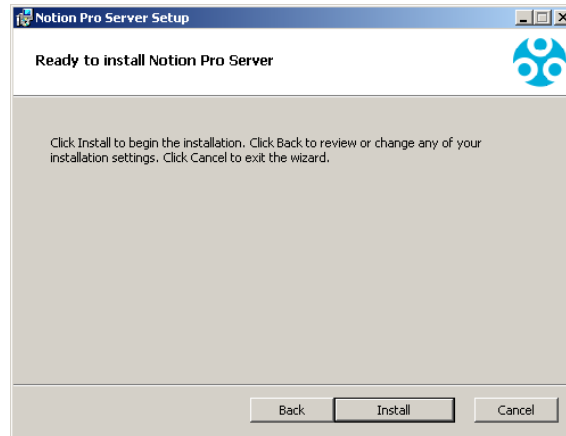


Figure 68

16. The **Installing Notion Pro Server** panel appears, then after a short delay the **Notion Pro Database Information** panel appears within a sub-window of the **Notion Pro Setup** window. **W600A** will show Figure 69 below, **W600B** will show Figure 70 below.

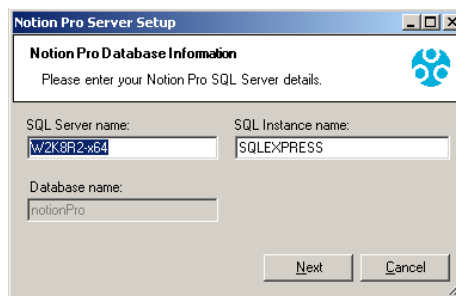


Figure 69

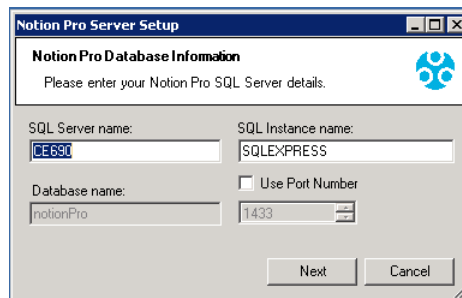


Figure 70

17. **W600A** leave the SQL Server name and SQL Instance name settings at their default values.
18. **W600B** enter the required SQL server name; and either enter the required instance name, or select '**Use Port number**' and set the required instance's port number in the numeric control number. Click **Next**. The **Notion Pro Location Information** panel appears within the **Notion Pro Setup** window. See Figure 71 below.

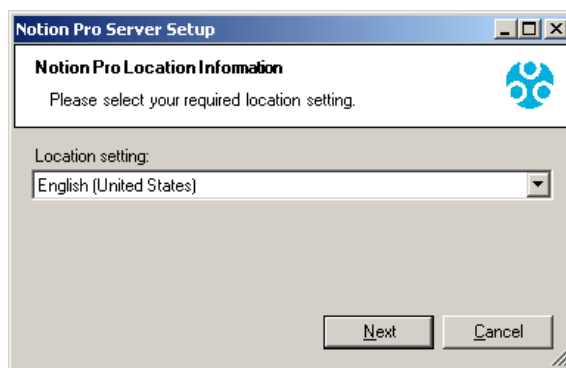


Figure 71

19. Select your location from within the 'Location setting:' list. Ensure the required locale is set correctly, otherwise date and times sent in SMS and Email messages may be incorrectly formatted.
20. Click **Next**. After a short delay the Completed the Notion Pro Server Setup Wizard message is displayed within the **Notion Pro Server Setup** window. Click **Finish**.

### 3.6.4 Installing the Notion Pro Backup/Archive Tool

1. The **NotionProBackupArchiveTool** appears. See Figure 72 below.

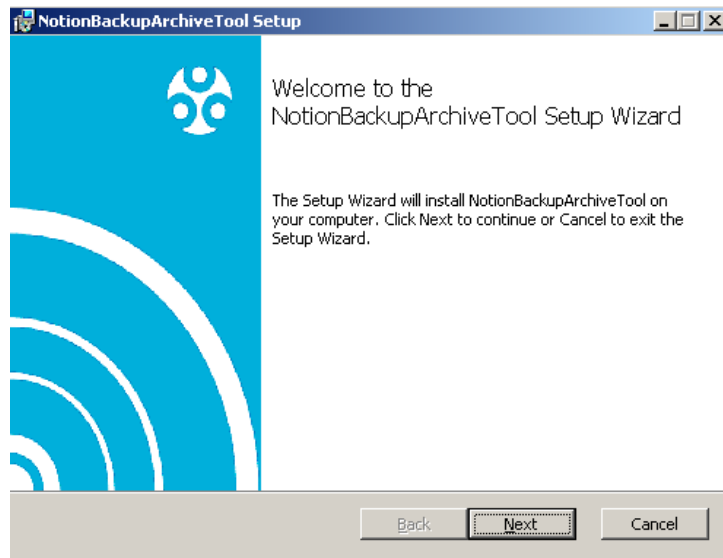


Figure 72

2. Click **Next**. The **End-User License Agreement** panel appears. See Figure 73 below.

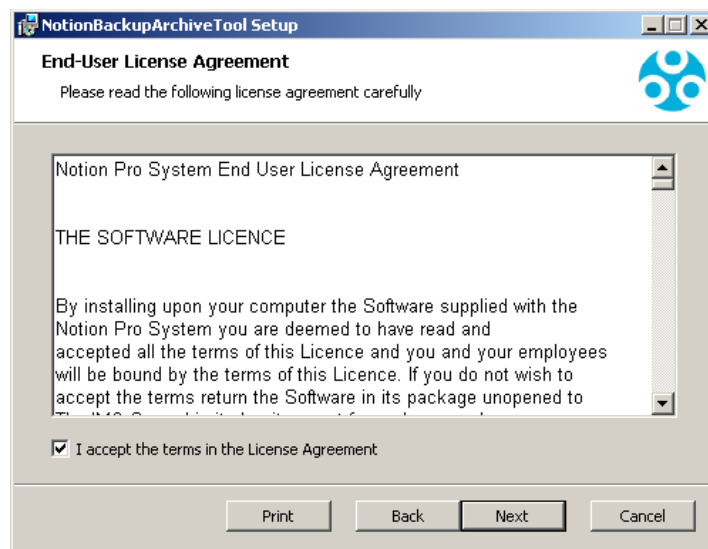


Figure 73

3. Read the licence agreement, select 'I accept the terms in the licence agreement' then click **Next**. The **Destination Folder** panel appears, see Figure 74 below.

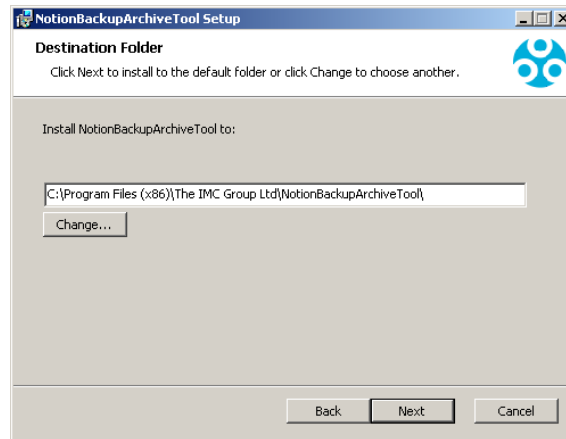


Figure 74

4. Click **Change...** to navigate to a destination folder for the Backup/Archive Tool or simply click **Next** to save to the default location (recommended).
5. The **Ready to install NotionProBackupArchiveTool** panel appears. Click **Install**.
6. After a short delay, the Completed the NotionProBackupArchiveTool Setup Wizard message is displayed, see Figure 75 below.

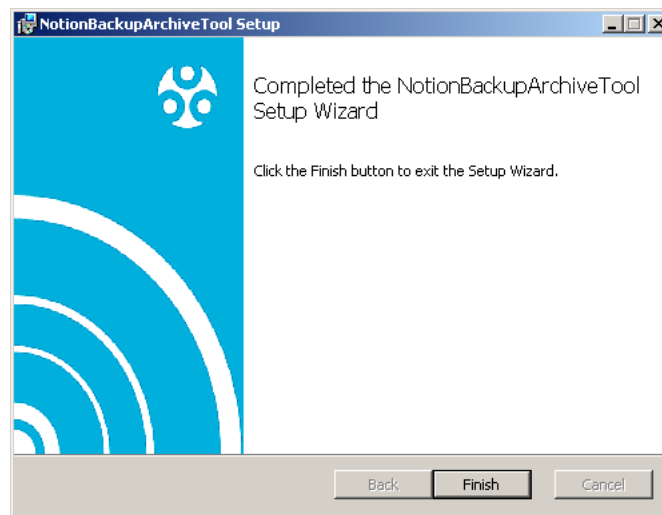


Figure 75

Notion Pro Backup Archive Tools setup is now complete. Click **Finish**. After a short delay the **NotionProBaseUtil Setup** window appears, see section 3.6.5.

### 3.6.5 Installing the Notion Pro Base Util

If Base Util has been selected, the next stage will begin the installation of the Notion Pro Base Util. This application is used to set the NotionPro server address and Base data port in, and the IP configuration of, base units.

1. Click **Next** on the **NotionProBaseUtil Setup** window. After a short delay the **End-User License Agreement** panel appears. See Figure 76 below.

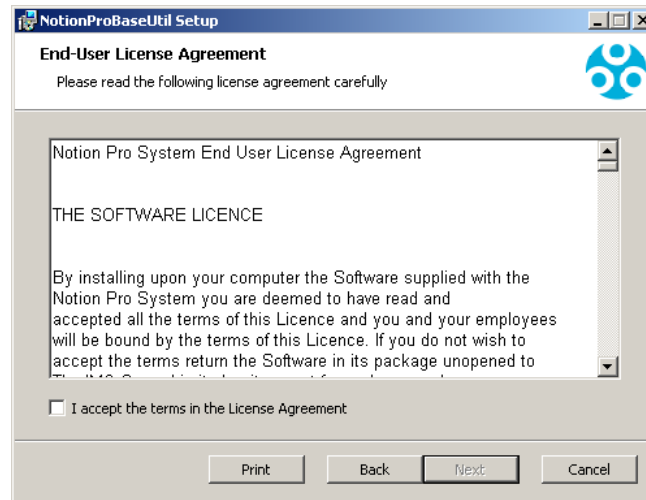


Figure 76

2. Read the Licence Agreement, tick 'I accept the terms in the Licence Agreement' then click **Next**. The **Destination Folder** panel appears. See Figure 77 below.

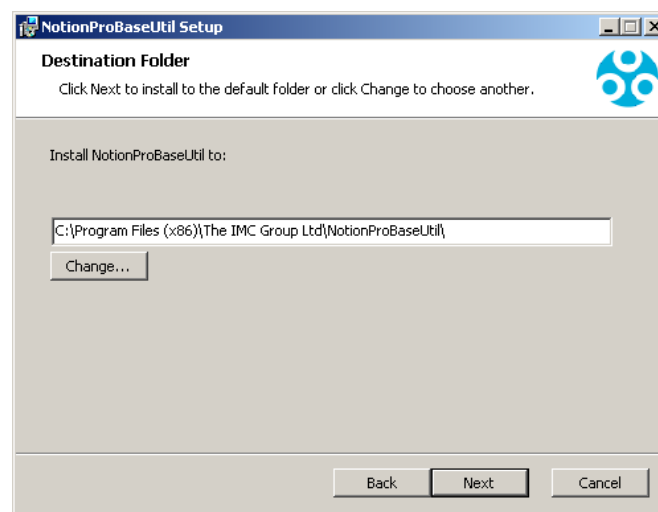


Figure 77

3. Click **Change...** to navigate to a destination folder for the Base Utility Service or simply click **Next** to save to the default location (recommended). The **Ready to install NotionProBaseUtil** panel appears. See Figure 78 below.

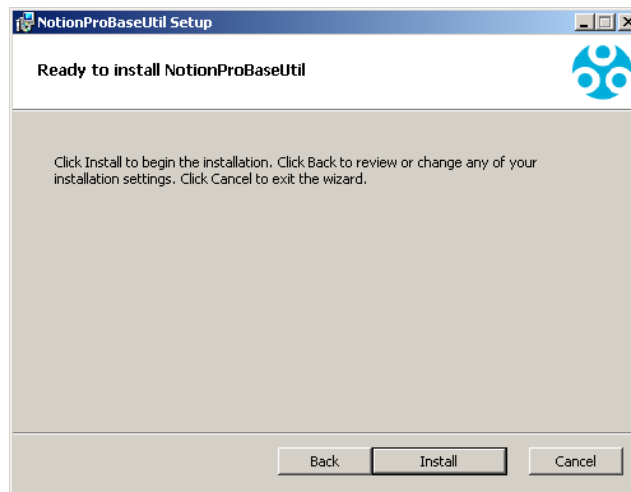


Figure 78

4. Click **Install**. After a short delay the Completed the NotionProBaseUtil Setup Wizard message appears. See Figure 79 below.

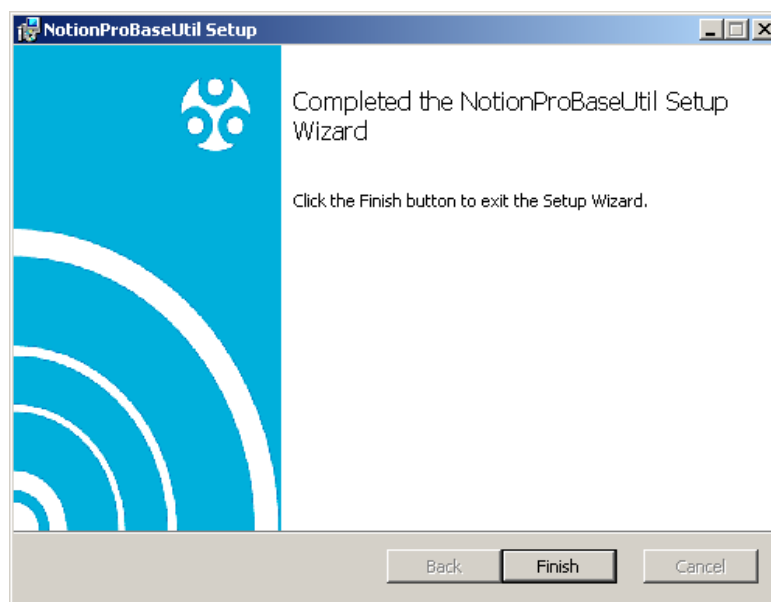


Figure 79

5. Notion Pro Base Utilities setup is now complete. Click **Finish**.
6. The **Notion Pro** panel appears, informing you that you need to re-boot your system to complete the installation. See Figure 80 below.

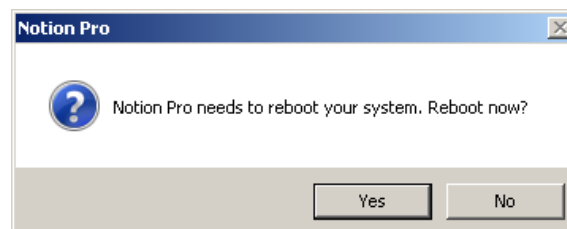


Figure 80


7. Click **Yes** to reboot the System.

After the Notion Pro software installation is complete and the server has been rebooted, work through Section 3.6.6 below.



### 3.6.6 Disabling Internet Explorer Enhanced Security Configuration

Some features of Notion Pro will not work correctly if Internet Explorer Enhanced Security Configuration is left ON, so it is advisable to turn this OFF prior to using Notion Pro.

1. Click on the  symbol at the bottom-left of the desktop. The **Server Manager** dialog box appears, see Figure 81 below.

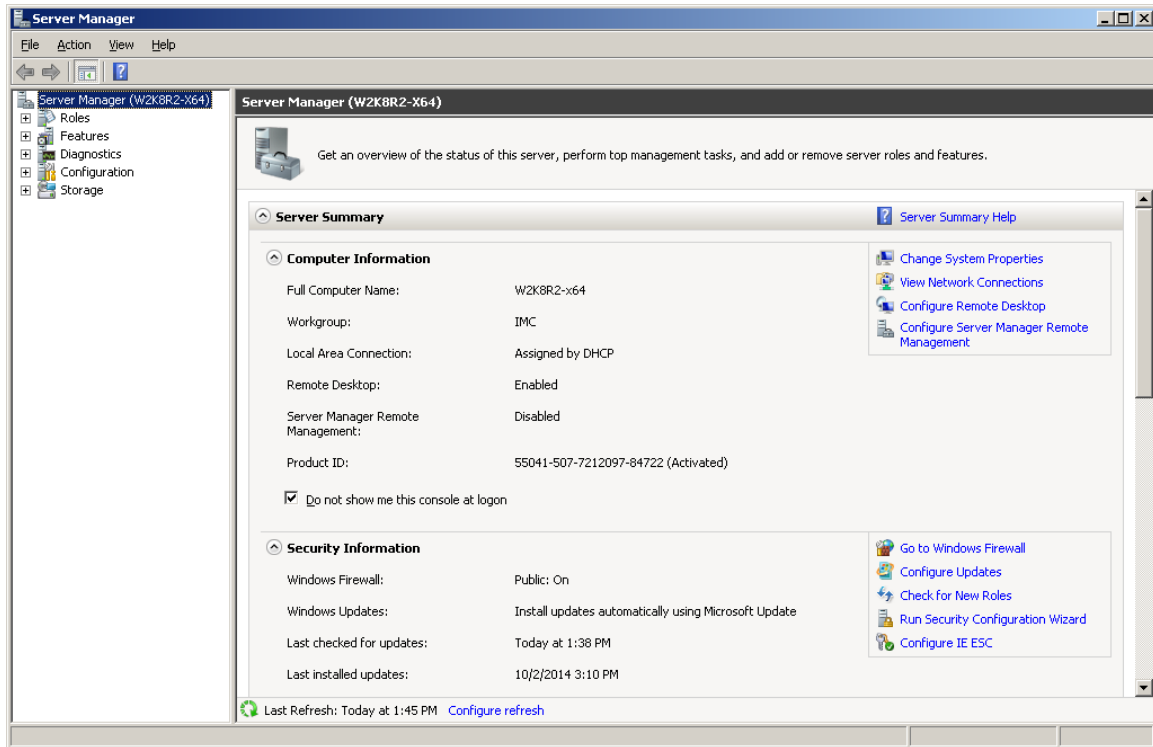



Figure 81

2. Select  **Configure IE ESC**. The **Internet Explorer Enhanced Security Configuration** dialog box appears. See Figure 82 below.

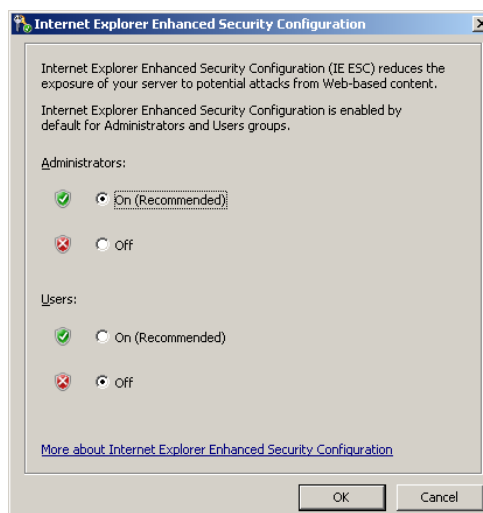


Figure 82

3. Select the 'Off' option radio buttons under Administrators and Users. Click **OK**.

Now check section 4 for any required Firewall configuration, before proceeding to Section 5 to configure the database.

## 3.7 Windows Server 2012 and 2012 R2

### 3.7.1 Before you Start

- Make sure that the computer you are going to install Notion Pro on meets the minimum required specification – see section 2.3.1.
- Ensure that the host Server machine for Notion Pro has all the latest Windows updates.
- Ensure that the host Server machine is NOT configured as a Web Server (IIS) – see section 2.3.4.2
- Ensure that .Net Framework 3.5.1 and Microsoft .Net Framework 4.5.2 is enabled on the host Server machine – see section 2.4.4. **Note:** you may need to get your System Administrator to do this.

You must follow each installation step carefully, and ensure you fully understand what you are changing if making a change during the installation, as an incorrect change could potentially render Notion Pro non-functional.

### 3.7.2 Notion Pro Installation Procedure

1. Insert the Notion Pro DVD and click run installation, if user account control is enabled click **Next**. See Figure 83 below. If user account control is not enabled, skip this step.

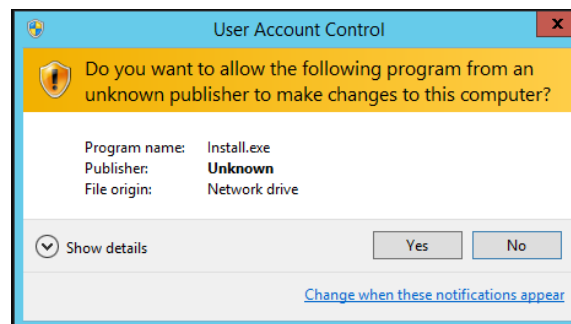


Figure 83

2. Click **Yes**. The **Notion Pro Install** window appears. If this is the Notion Pro Server select 'Install Notion Pro Server Components', see Figure 84 below.

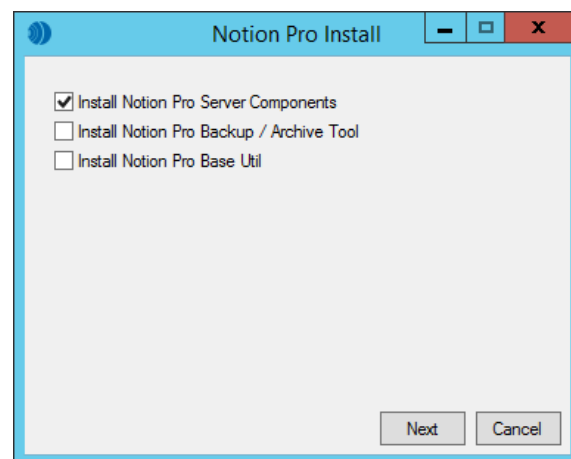


Figure 84

- If you wish to install the Notion Pro Backup/Archive tool then select the tick box.
- If Notion Pro Base Stations (Network Receivers) are to be controlled from this machine, select 'Install Notion Pro Base Util'.

### 3.7.3 Installing Notion Pro Server Components

1. Click **Next** on the **Notion Pro Install** window. The **Microsoft ODBC Driver 11 for SQL Server 2014 Licence** window may appear, see Figure 85 below.

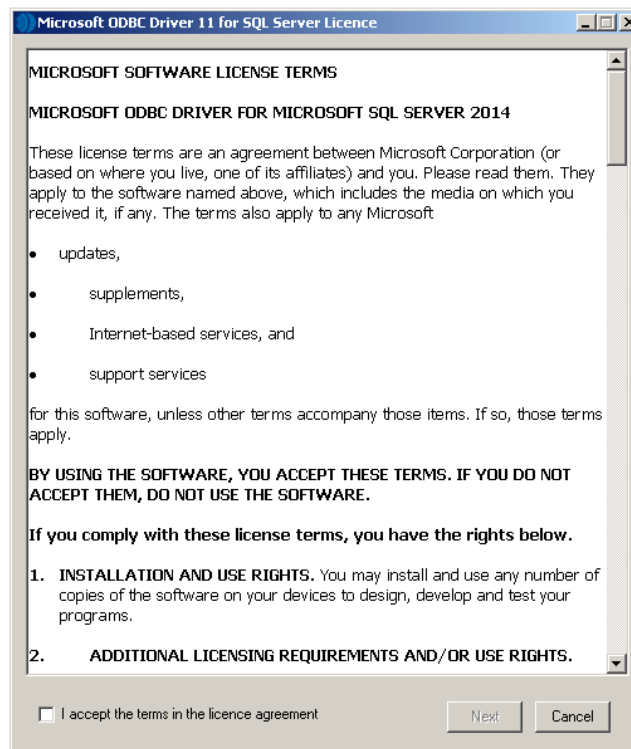


Figure 85

2. Read the licence agreement, select 'I accept the terms in the licence agreement' then click **Next**.
3. **W600A**, after a short delay, the Notion Pro Server Setup window will appear if SQL Express is not installed; this will show the SQL Server 2014 Express panel at the top. See Figure 86 below.

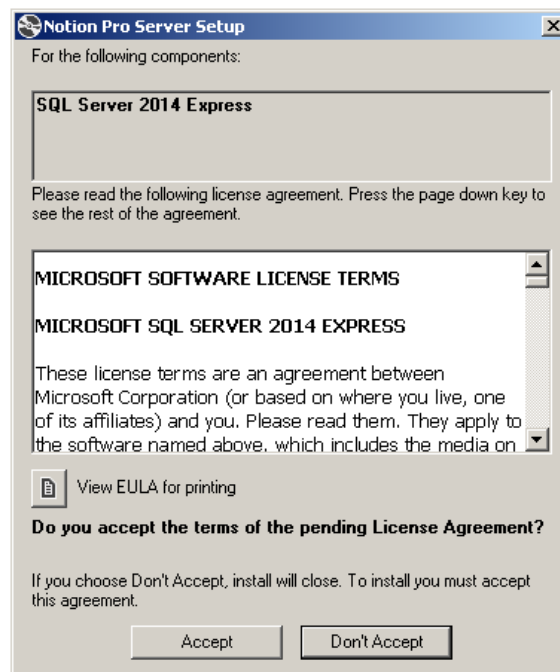


Figure 86

- Read the licence agreement, then click **Accept**. After a short delay, the **Visual C++ 2012 and 2015 Runtime Libraries (x86)** panel may appear. See Figure 87 below.

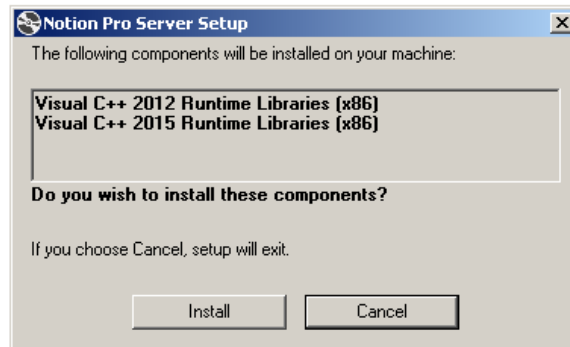


Figure 87

- Click **Install**. After a short delay, the **Microsoft Visual C++ 2012 Redistributable (x86)** window may appear, see Figure 88 below.

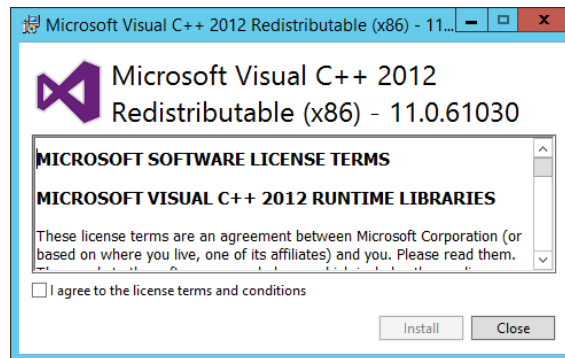


Figure 88

- Read the licence agreement, select 'I agree to the licence terms and conditions' then click **Install**.
- After a short delay, **Setup Successful** appears in the **Microsoft Visual C++ 2012 Redistributable (x86)** window, see Figure 89 below.

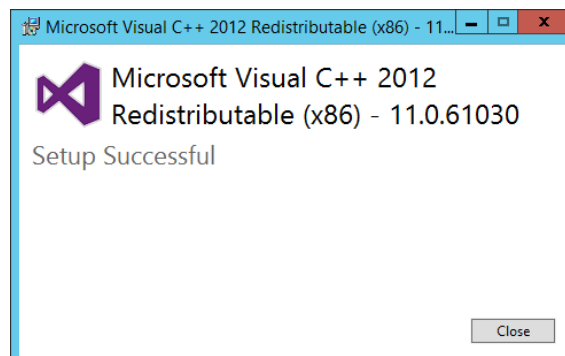


Figure 89

- Click **Close**. After a short delay, the **Microsoft Visual C++ 2015 Redistributable (x86)** window may appear. Follow the steps which are similar to Microsoft C++ 2012 Redistributable (x86) installation.
- Click **Close**. If SQL Express is to be installed, the **Notion Pro Server Setup** window appears, with a progress bar for SQL Server 2014 Express With Tools installation. SQL installation will take several minutes.
- The **Notion Pro Server Setup** window displays Welcome to the Notion Pro Server Setup Wizard.

11. Click **Next**. The **End-User License Agreement** panel appears within the **Notion Pro Server Setup** window, see Figure 90 below.

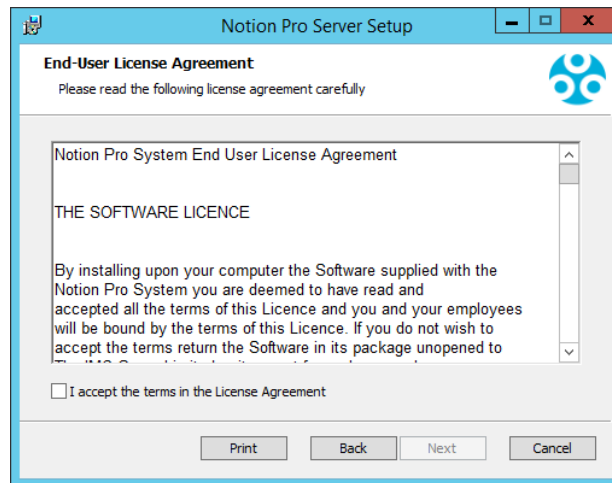


Figure 90

12. Read the licence agreement, select 'I accept the terms in the licence agreement' then click **Next**.

13. **W600A**. If installing W600A continue to step 15 below.

**W600B**. If installing W600B the Service Account dialog will now display. Enter the user credentials you have set up for the Notion Pro System to use and click **Check Credentials** then click **Next**. You may only select 'Use Local Service Accounts' if Notion Pro is being installed on the SQL Server machine.

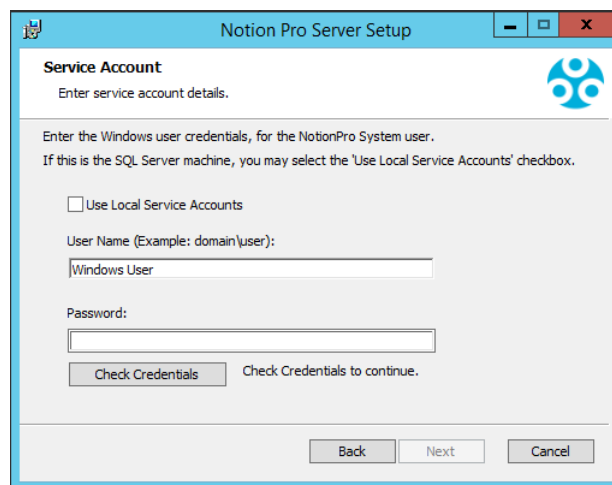


Figure 91

14. **W600B** The Destination Folder dialog shows, see Figure 92. If required, the installation folder can now be changed; clicking **Change...** display a folder browser dialog, allowing the destination folder to be changed. When completed click **Next**

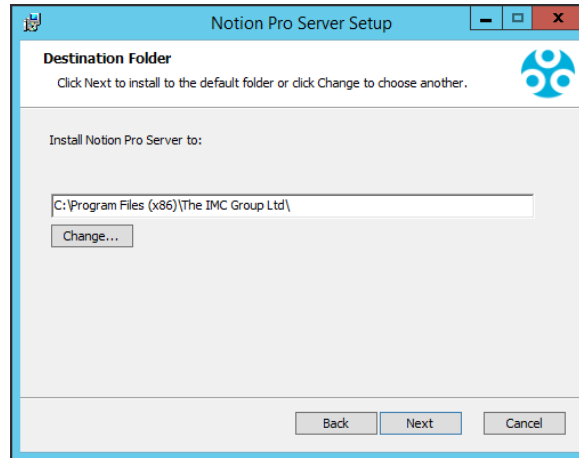


Figure 92

15. The next stage will proceed with installing the Notion Pro server Instance, click **Install** see Figure 93 below.

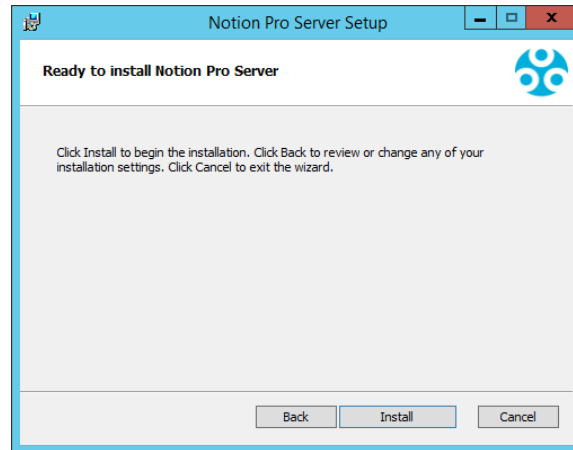


Figure 93

16. The **Installing Notion Pro Server** panel appears, then after a short delay the **Notion Pro Database Information** panel appears within a sub-window of the **Notion Pro Setup** window. **W600A** will show Figure 94 below, **W600B** will show Figure 95 below.

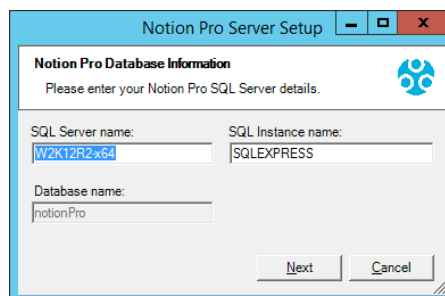


Figure 94

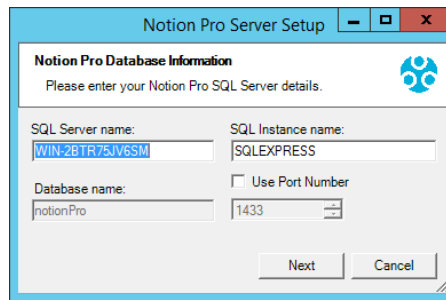


Figure 95

17. If installing W600A leave the SQL Server name and SQL Instance name settings at their default values; if installing W600B enter the required SQL server name and instance name. Click **Next**.
18. The **Notion Pro Location Information** panel appears within the **Notion Pro Setup** window. See Figure 96 below.

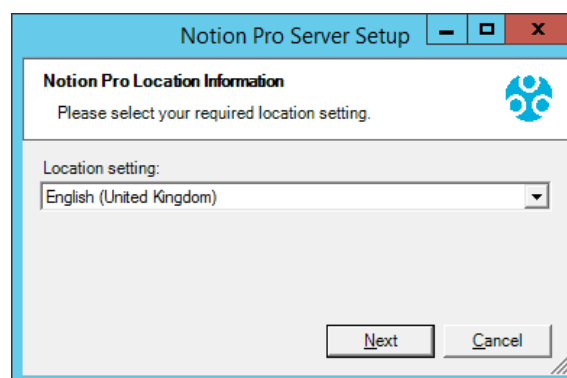


Figure 96

19. Select your location from within the 'Location setting:' list. Ensure the required locale is set correctly, otherwise date and times sent in SMS and Email messages may be incorrectly formatted.
20. Click **Next**. After a short delay the Completed the Notion Pro Server Setup Wizard message is displayed within the **Notion Pro Server Setup** window. Click **Finish**.

### 3.7.4 Installing the Notion Pro Backup/Archive Tool

1. The **NotionProBackupArchiveTool** appears. See Figure 97 below.

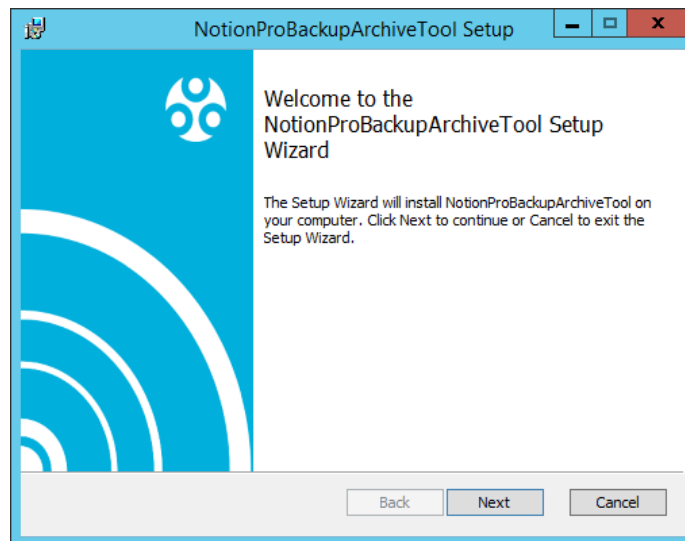


Figure 97

2. Click **Next**. The **End-User License Agreement** dialog appears. See Figure 98 below.

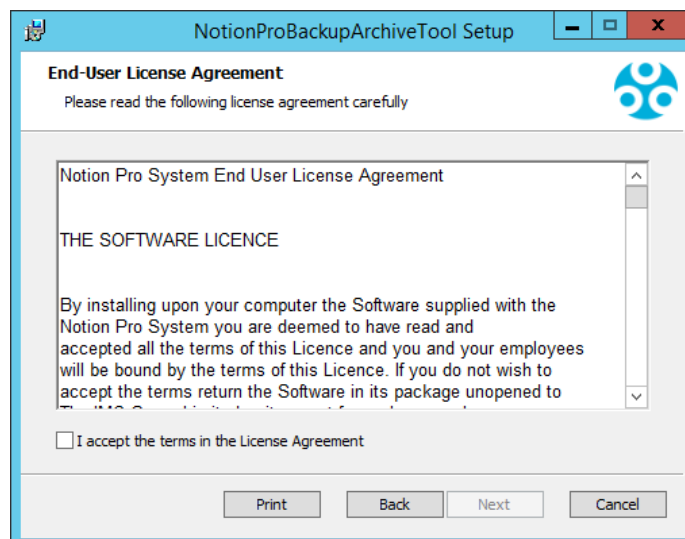


Figure 98

3. Read the licence agreement, select 'I accept the terms in the licence agreement' then click **Next**.
4. The **Destination Folder** dialog appears, see Figure 99 below.



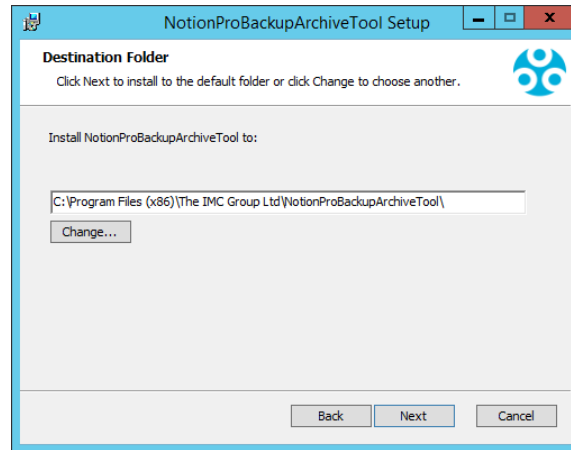


Figure 99

5. Click **Change...** to navigate to a destination folder for the Backup/Archive Tool or simply click **Next** to save to the default location (recommended).
6. The **Ready to install NotionProBackupArchiveTool** dialog appears. Click **Install**.
7. After a short delay, the Completed the NotionProBackupArchiveTool Setup Wizard message is displayed, see Figure 100 below.

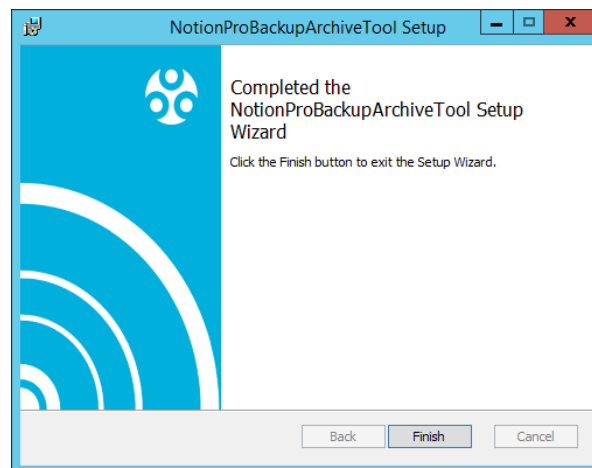


Figure 100

8. Notion Pro Backup Archive Tools setup is now complete. Click **Finish**. After a short delay the **NotionProBaseUtil Setup** dialog appears, see section 3.7.5.

### 3.7.5 Installing the Notion Pro Base Util

If Base Util has been selected, the next stage will begin the installation of the Notion Pro Base Util. This application is used to set the NotionPro server address and Base data port in, and the IP configuration of, base units.

1. Click **Next** on the **NotionProBaseUtil Setup** window after a short delay the **End-User License Agreement** panel appears. See Figure 101 below.

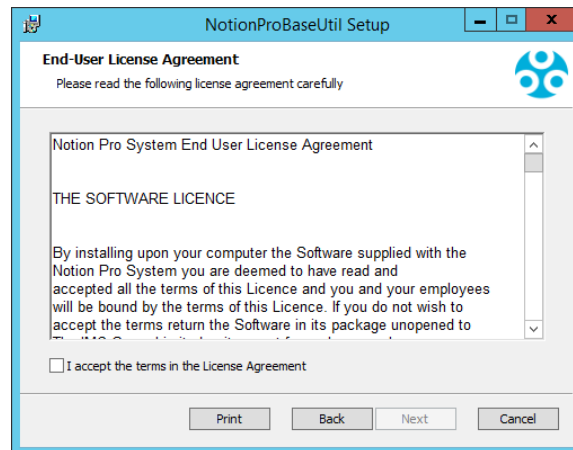


Figure 101

2. Read the Licence Agreement, tick 'I accept the terms in the Licence Agreement' then click **Next**. The **Destination Folder** panel appears. See Figure 102 below.

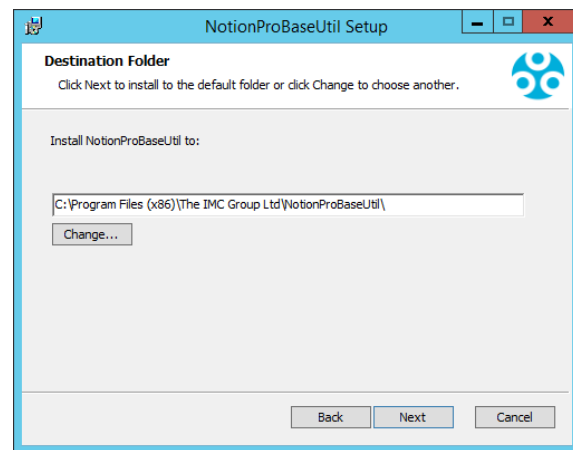


Figure 102

3. Click **Change...** to navigate to a destination folder for the Base Utility Service or simply click **Next** to save to the default location (recommended). The **Ready to install NotionProBaseUtil** dialog appears. See Figure 103 below.

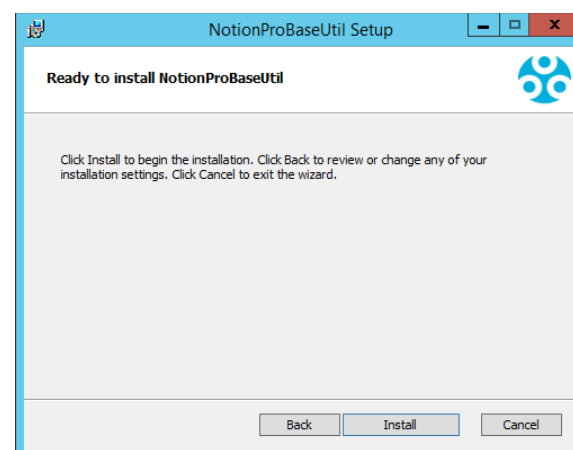


Figure 103

- Click **Install**. After a short delay the Completed the NotionProBaseUtil Setup Wizard message appears. See Figure 104 below.

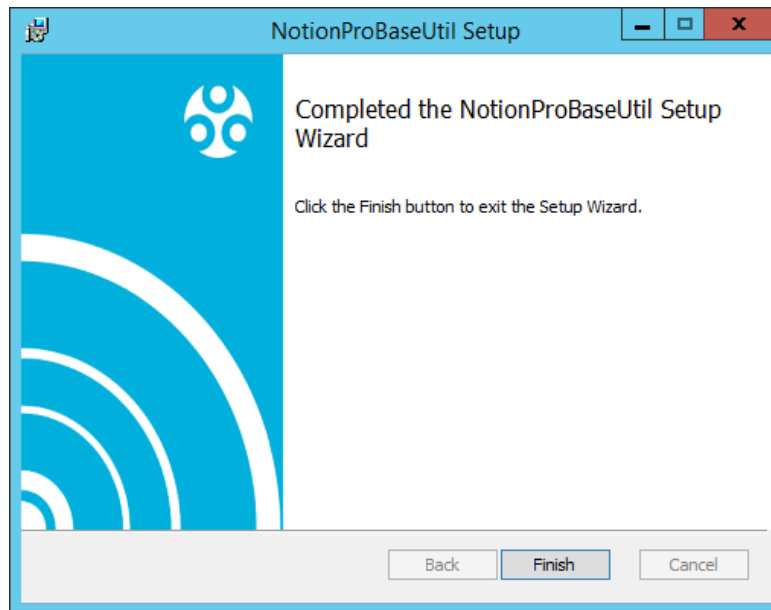


Figure 104

- Notion Pro Base Utilities setup is now complete. Click **Finish**.
- The **Notion Pro** panel appears, informing you that you need to re-boot your system to complete the installation. See Figure 105 below.

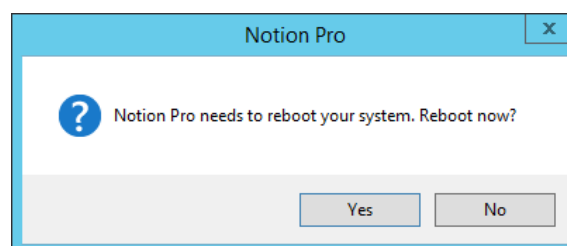



Figure 105

- Click **Yes** to reboot the System.

After the Notion Pro software installation is complete and the server has been rebooted, work through section 3.7.6 below.

### 3.7.6 Disabling Internet Explorer Enhanced Security Configuration

Some features of Notion Pro will not work correctly if Internet Explorer Enhanced Security Configuration is left ON, so it is advisable to turn this OFF prior to using Notion Pro.

1. Click on the  symbol at the bottom-left of the desktop. The **Server Manager** dialog box appears, see Figure 106 below.

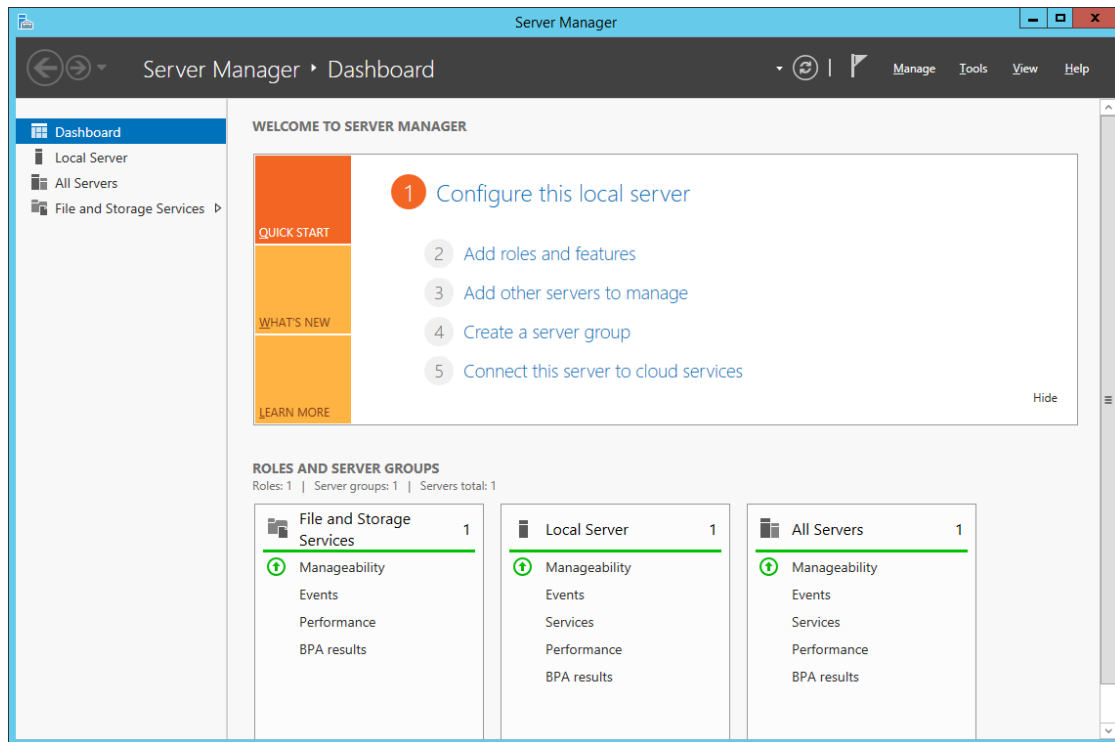


Figure 106

2. Select the  Local Server icon. The Local Server panel appears. See Figure 107 below.

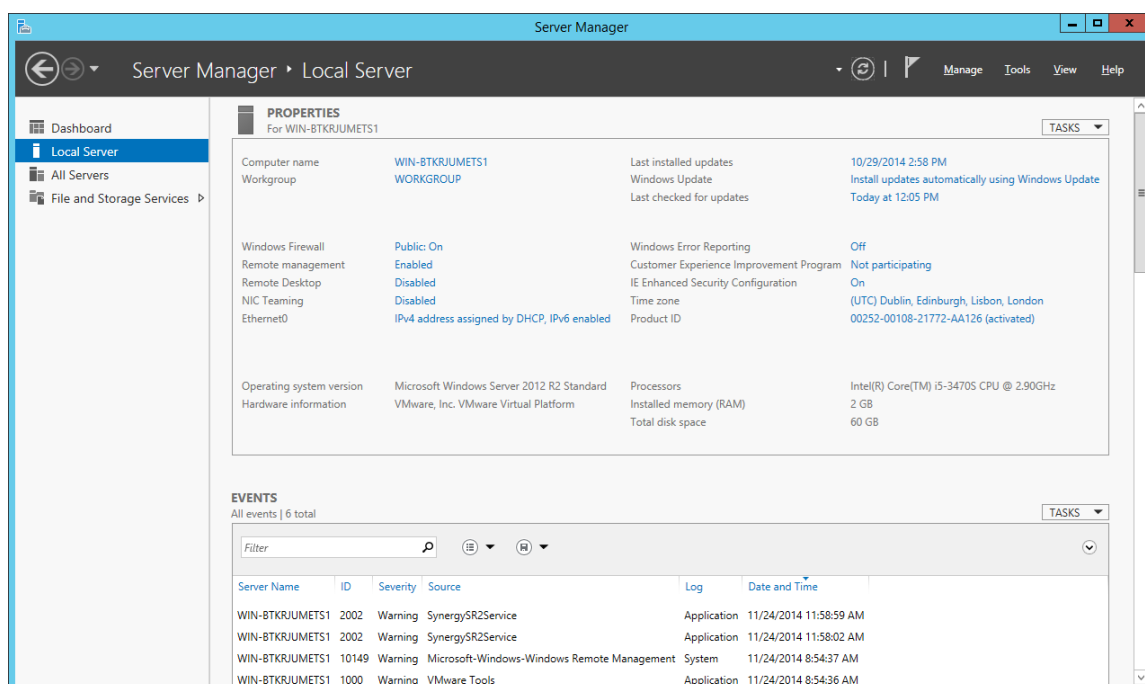


Figure 107

3. Select **On** next to IE Enhanced Security Configuration (right side of panel). The **Internet Explorer Enhanced Security Configuration** dialog box appears. See Figure 108 below.

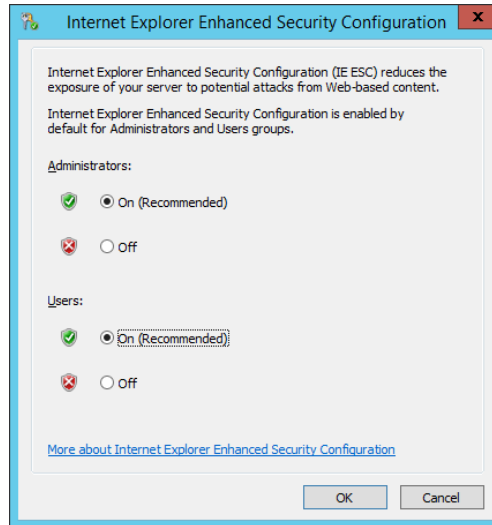



Figure 108

4. Select the 'Off' option buttons under Administrators and Users. Click **OK**.

The **Internet Explorer Enhanced Security Configuration** dialog box disappears text to the right of 'IE Enhanced Security Configuration' changes to Off. (You may need to refresh the Local Server panel by clicking  in the menu bar at the top to see this.)

Now check section 4 for any required Firewall configuration, before proceeding to Section 5 to configure the database.

## 4 Firewall Configuration

After installing the Notion Pro Server Components, any software Firewall needs to be configured to allow connection to the Apache Server.

The Customer must add a rule to allow incoming HTTP connections on Port 80, the Rule needs to apply to all networks that the Customer intends to allow browser access from.

Rules must be added to relevant Firewall(s) to allow incoming connections on the Notion pro Listening port; this port is set when creating the database, the default is 10997.

In addition, the Firewall may need to be configured to allow MS SQL connections, the default connections are **TCP port 1433**, and **UDP port 1434**; however, the Customer may choose the correct TCP port for the required SQL instance when installing **Notion Pro W600B**. If using **Notion Pro W600B** to connect to an SQL server on a separate machine on the LAN; then any Firewall on the SQL server machine will also need to be configured to allow the incoming SQL connections.

If the Customer wishes to connect from remote Base units where no intranet is in place, then the Customer must ensure that all Firewalls are configured to allow connections between the remote networks over the requisite TCP/IP ports. Customers can use the table in section 2.2 to assist with this process.

Use of iSense sensors requires an outgoing connection from the Notion Pro server on port 8081 TCP.

## 5 New Database Configuration

### 5.1 Pre-Configuration Operations

1. Select **Start>All Programs>NotionPro>NotionProConfig**.

(If using Windows Server 2012 R2, click , click  (bottom left of the screen), then click  - you may need to scroll to the right.)

2. To run Notion Pro Config, the user must be an administrator on the local machine.
3. If User Account Control is enabled, a **User Account Control** window appears. See Figure 109 below.

**Note:** in Windows Server 2012 R2, the dialog boxes shown in the rest of this section will differ slightly in appearance from those shown here, but are functionally identical.

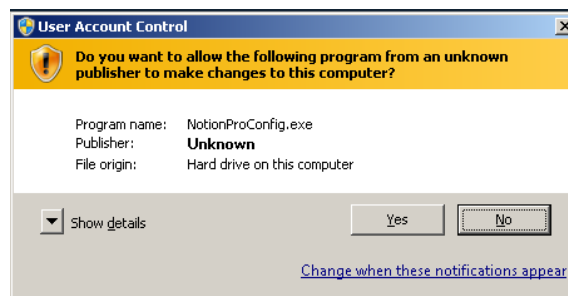


Figure 109

4. Click **Yes**. The **Notion Pro Services** information window appears, warning you that Notion Pro services need to be stopped while the NotionProConfig application is running. See Figure 110 below.

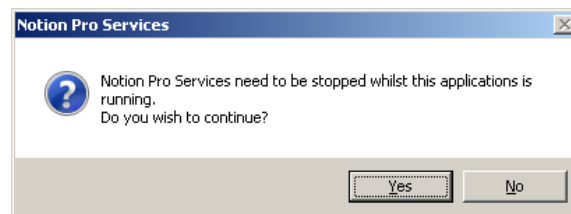


Figure 110

5. Click **Yes**. The **Notion Pro Configuration** information window appears warning you that it could take up to one minute for pooling connections to disconnect. See Figure 111 below.

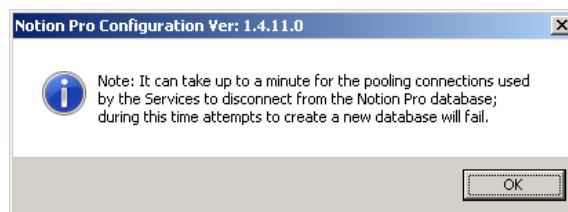


Figure 111

6. Click **OK**. The **Notion Pro Data Service** information window appears, warning you not to try to start the Notion Pro Data service until the configuration application has closed. See Figure 112 below.

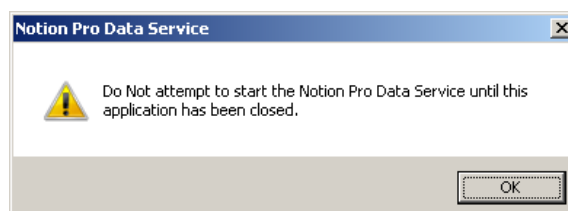


Figure 112

7. Click **OK**. You may find that Synergy services will be stopped during the period which Synergy Config Utility is open.

Do not try to restart any services during this period; all services will restart themselves once Synergy Config utility is closed.

The Synergy Configuration utility will search for SQL servers, this may take some time.

### 5.1.1 W600A

**W600A** must use an SQL server on the Local machine, and this should appear at the top of the list, see Figure 113 below.

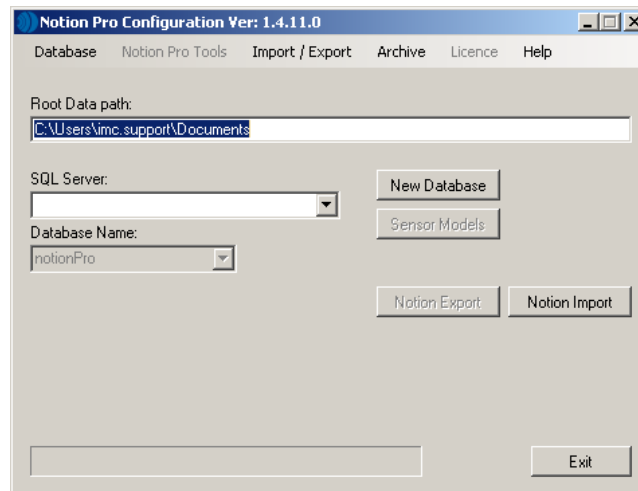


Figure 113

### 5.1.2 W600B

**W600B** can use an SQL server on either the local machine, or another machine on the LAN. The SQL Search function will only work if SMO components have been installed as part of an SQL Server or SQL Server Manager Studio installation on the local machine.

If SQL Servers are shown, continue at section 5.1.4

Typical SQL Servers shown above.

### 5.1.3 W600B No SQL Servers Shown

If no Servers are shown in the **SQL Server** control, select the **Manual Connection** menu item from the **Database** menu, see Figure 114 below. This will display the **Manual Connection** dialog box, see Figure 115 below.

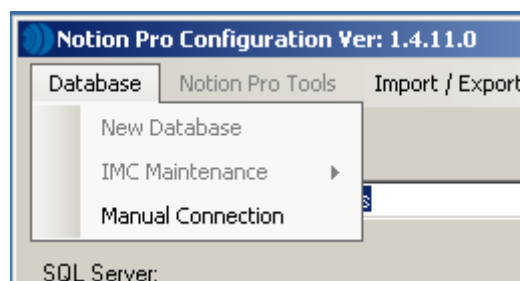


Figure 114.



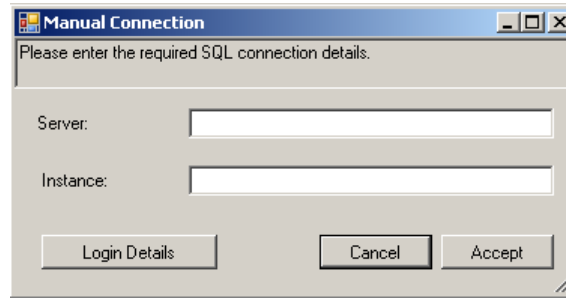


Figure 115

8. Enter the required SQL Server machine name and SQL server Instance name in the appropriate text fields, then click **Login Details** to display the **SQL Administrator Account** dialog box, see Figure 116 below.



Figure 116

9. Generally **Windows Account** should be selected to use a Windows integrated login. However, if necessary a SQL **Username** and **Password** can be entered in the appropriate text fields.
10. Now click **Accept** to return to the **Manual Connection** dialog box, then click **Accept** on the **Manual Connection** dialog box to continue.
11. The **Config Utility** application will now test the SQL connection details.

If the test is successful a 'Successfully connected to SQL Server' message will be displayed. Continue at section 5.1.4.1 below.

If the test is unsuccessful an 'SQL Connection failure' message will be displayed. Check you connection and login details, and retry.

12. If you are sure that your connection and login details are correct and the process still fails, check all associated Firewall settings and check that the SQL server is configured to accept remote connections. Check that a connection can be routed from the Notion Pro Server to the SQL Server.

If you are unsure how to do this, ask your System Administrator or IT support provider for assistance. Please do **NOT** ask IMC for assistance until you have established that an SQL connection can be made from the Notion Pro Server to the SQL Server.

### 5.1.4 SQL Servers Shown

If the SQL Servers are shown, select the required SQL server instance from the drop down list. If the required SQL server is not shown, check Firewall settings on the local and SQL server machines, and make sure the *SQL Server Browser* service is running on the SQL server.

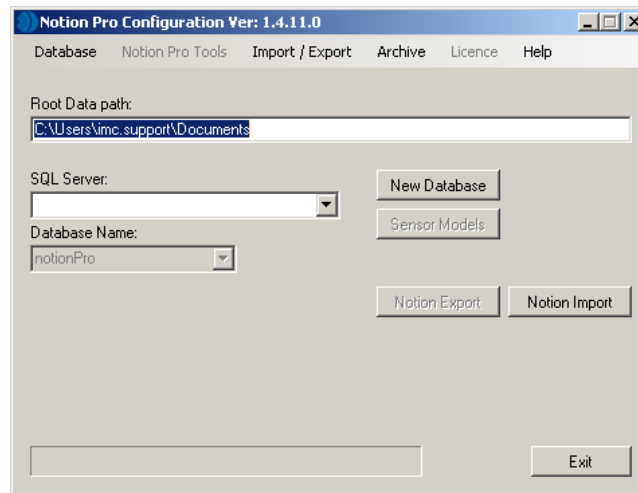


Figure 117

#### 5.1.4.1 W700B Remote SQL Server

If connecting to an SQL server on another machine on the LAN, the SQL Administrator login dialog box, see Figure 116 above, may appear.

If the user's Windows login maps to a Sys Admin role on the SQL server, leave the text boxes blank, select the **Windows Login** checkbox, and click **Accept** to continue.

If the user's Windows login does **NOT** map to a Sys Admin role on the SQL server, enter the **Username** and **Password** for the required SQL Sys Admin account, make sure the **Windows Login** checkbox is deselected, and click **Accept** to continue.

## 5.2 Creating a New Database

1. Click **New Database** in the **Notion Pro Configuration** window.
2. After a short delay the **Company Details** window appears, see Figure 118 below.

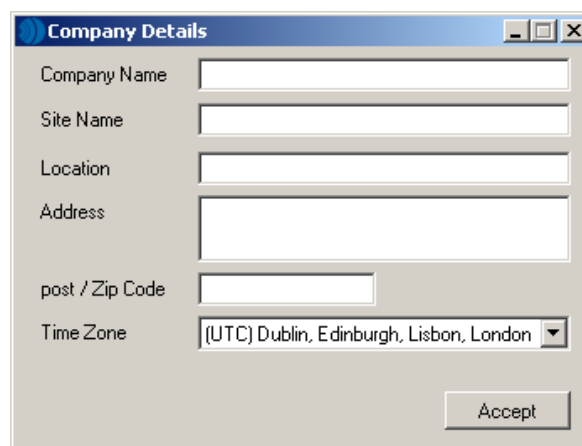


Figure 118

Fill in your Company details as appropriate. Set Time Zone to the time zone of your Site. (The value displayed by default is the time zone of the host PC. It is important to set this correctly, as dates in the database are stored using GMT.) **Users entering address data should adhere to local data protection requirements and regulations.**

- Click **Accept**. After a short delay, the **Notion Pro Listen Port** message window appears, see Figure 119 below.

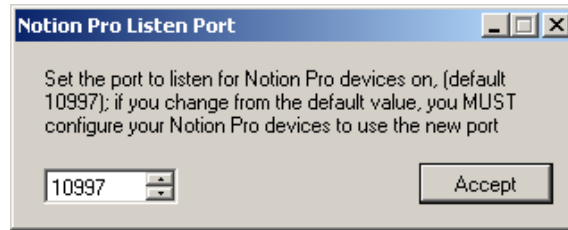


Figure 119

- Note:** it is highly recommended that the default Port Number is used for all devices. If there is a port conflict this should be noted on the *Notion Pro Pre-Requisites Manual* (doc. no. IM5546), so that all Base type units can be configured correctly. Click **Accept**.
- The **Notion Pro Listen Port** information window disappears and the **New Database** message window appears to inform you of a successful database creation.
- Click **OK** on the **New Database** message window.
- Click the **Sensor Models** button on the **Notion Pro Configuration** window. This imports Notion Pro transmitter types into the database.
- After a short delay, the **Notion Pro Configuration** information window appears to confirm that the sensor model data has been imported successfully. See Figure 120 below.

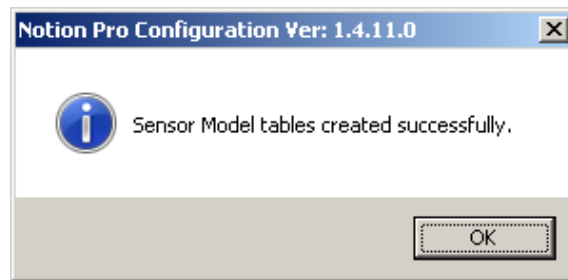


Figure 120

- Click **OK** on the **Notion Pro Configuration** message window.
- Select **Notion Pro Tools>Reports Folder** from the menu bar at the top of the **Notion Pro Configuration** window. The **Reports Folder** message window appears, see Figure 121 below.

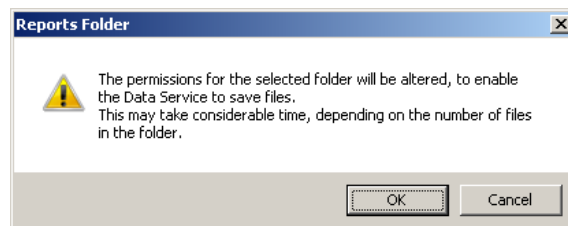


Figure 121

- Click **OK** on the **Notion Pro Configuration** message window. The **Browse For Folder** window appears. See Figure 122 below.



Figure 122

12. The next step in the procedure is to decide on a location that generated reports will be saved on the host machine. The options are either a pre-existing location of your choice, or to select a new folder.

To select an existing folder, use the **Browse For Folder** window to navigate to the required folder, then click **OK**.

To create a new folder, use the **Browse For Folder** window to navigate to the required parent folder, then click **Make New Folder**. A new folder appears with the highlighted name **New folder**. Click in **New folder**, backspace and type the required folder name.

13. Click **OK**. Database configuration is now completed.

## 6 Connection Test

After installation and Configuration, test the connection to Notion Pro with a web browser. Open a browser window and enter the name or IP address of the machine followed by /Notion Pro into the address bar.

For example, if this was installed on a server and you were also working from the server the address you will need to place in the web browser would be <http://localhost/NotionPro>. If you were performing this from a client it will be <http://<hostname>/NotionPro>.

If this does not work on a remote machine, try on the Notion Pro host machine, to test if a Firewall is blocking access.

### 6.1.1 Windows 10 Edge / Project Spartan

The local loopback address is disabled by default in the Microsoft Edge / Project Spartan browser; this means that by default you cannot browse to Notion Pro using Edge / Spartan on the local Notion Pro server. At the time of writing, the following methods are available for enabling the local loopback address:

1. Run the following command from a command prompt, running as administrator: `CheckNetIsolation LoopbackExempt -a -n=Microsoft.Windows.Spartan_cw5n1h2txyewy`.
2. For build 10166 or later you may be able to use the following: open an Edge/Spartan tab and navigate to `about:flags`; then under Developer Settings select the 'Allow localhost loopback' option.

**Note:** At the time of writing Edge/Spartan is still an early release and access to settings is in flux; thus neither of the above is guaranteed to work going forward. If you have problems enabling the local loopback address please try the following: check Microsoft's technical support websites; download & use another browser; or contact your system administrator or IT support provider.

### 6.1.2 Default Administrator User

User name: Admin User

Password: Admin

**You are now ready to configure Notion Pro for daily use, see the System Manual (doc.no. IM5521) or the Help for further instructions.**

## 7 The Reports Folder

The Reports Folder is where Notion Pro stores copies of the Scheduled Reports, set-up and run by the users. This section details the process for setting the Reports folder, so that it can be changed after initial database configuration.

1. Within the Notion Pro Configuration tool select **Notion Pro Tools>Reports Folder** from the menu bar, see Figure 123 below. The **Reports Folder** information window appears, see Figure 124 below.

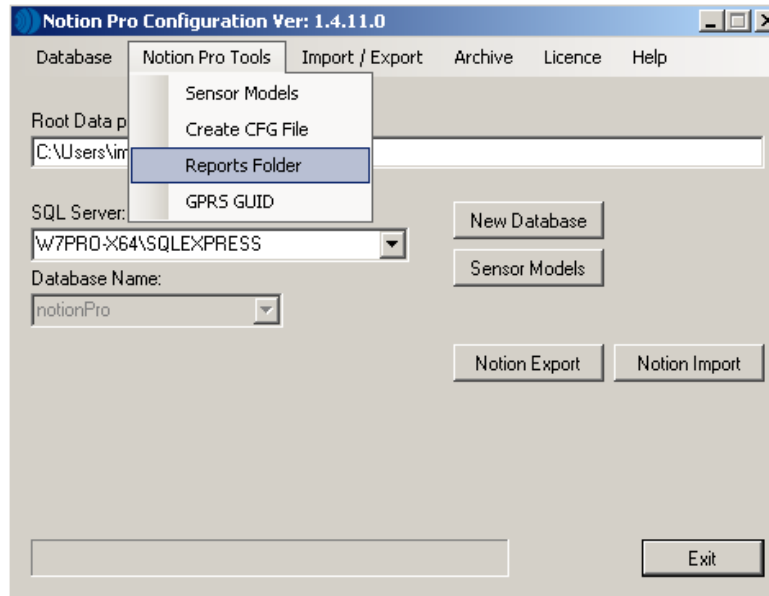


Figure 123

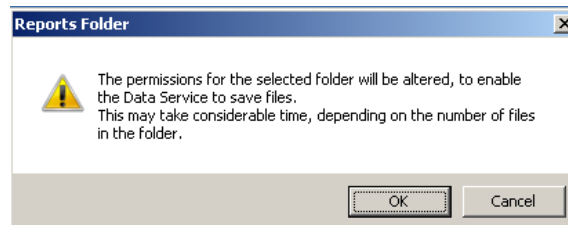


Figure 124

2. The next step in the procedure is to select a location that generated reports will be saved on the host machine. The options are either a pre-existing location of your choice, or to select a new folder.

**Figure 125**

3. To select an existing folder, use the **Browse For Folder** window (see Figure 125above) to navigate to the required folder. Click **OK**.

To create a new folder, use the **Browse For Folder** window to navigate to the required parent folder, then click **Make New Folder**; a new folder appears with the highlighted name **New folder**.

Click in **New folder**, backspace and type the required folder name. Click **OK**.

## 8 Exporting the Database

### 8.1 Notion Pro Export

The entire Notion Pro System can be migrated from the current host computer, to another machine, using Notion Pro Export and Notion Pro Import. Exported Notion Pro data is stored in a compressed file.

#### 8.1.1 Limitations

Any Notion Pro licences will not be included in the Notion Pro Export; these will need to be deactivated on the original computer, and then re-activated on the target machine. If you wish to Export a system with user licencing, contact IMC Support for assistance first.

SMTP passwords are stored using a key related to original machine. These will become corrupted and need to be re-entered on the new machine, after Notion Pro Import. Follow the Notion Pro System Manual (doc. no. IM5521, section 2.4 System Configuration), to implement the SMTP server password.

#### 8.1.2 Notion Pro Export

To export a Notion Pro System, open the Notion Pro Configuration tool and select **Notion Pro Export**.

A Folder Browser dialog box will be displayed, see Figure 126 below.



Figure 126

Use this to select the folder that you wish to save the Export File into. Once the desired location has been selected click .

The exported data will be stored in a file called **NotionProExp.zip**.



## 9 Licensing

A standard Notion Pro installation includes the System Administrator user and four standard users. If you wish to create any additional users these must be licenced. See Section 9.

Notion Pro feature and user licences are activated using the Notion Pro Config Utility's Licence menu options. Customers are strongly advised to keep copies of all Licence IDs and associated passwords, purchased for the Notion Pro system.

### 9.1 Online Activation (Basic Procedure)

The easiest and safest way to activate licences is online. IMC recommends this method if possible.

To activate a licence online, the Notion Pro Server needs access to the internet.

4. Open the **Notion Pro Configuration** tool, then select **Licence>Activate Online**. After a few seconds, the **Activate Online** dialog box will be shown, see Figure 127 below.

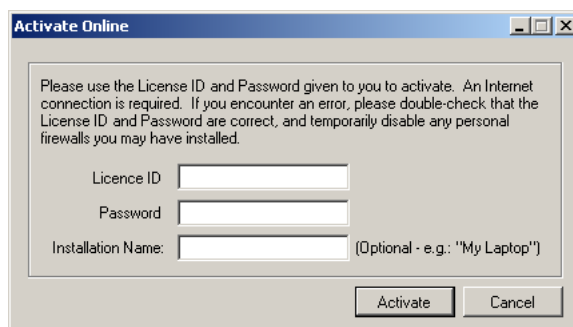


Figure 127

2. Enter the required Licence ID and Password, and then click **Activate**. After a few seconds you will see a message stating that the licence has been activated.

## 9.2 Manual Activation

Where necessary manual activation is possible.

1. Open the Notion Pro Configuration tool, then select **Licence>Activate Manually**. After a few seconds, the **Activate Manually** dialog box will be shown, see Figure 128 below.

**Activate Manually**

Step 1: Enter your activation information and click Generate Request:

Licence ID

Password

Step 2: Copy the activation request and paste it into the activation web page:

Activation Request:

Or copy url to a browser:

<https://secure.softwarekey.com/solo/customers/ManualRequest.aspx>

Step 3: Copy the Activation Code from the web page, paste it below, and click Activate:

Activation Code

Figure 128

2. Enter the required License ID and Password, then click .
3. The activation request text will be displayed, copy this text to a text file and transfer it to a machine with internet access.
4. Open a browser and navigate to <https://secure.softwarekey.com/solo/customers/Manualrequest.aspx>. Either copy the request text into the textbox, or upload it to the server, click .
5. The server will generate and present an XML licence text. Copy this licence to a text file.
6. Return to the Notion Pro server, and paste the licence text into the text box provided at the bottom of the **Activate Manually** dialog box. Then click .

### 9.3 Online Deactivation

Notion Pro licences can be deactivated to assist in migrating Notion Pro to a new server.

**Note:** Most Notion Pro licence types are limited to five deactivations; some licence types cannot be deactivated.

1. Open the Notion Pro Configuration tool, then select **Licence>Deactivate Online**. The **Deactivate Licence** dialog will be displayed, see Figure 129 below.

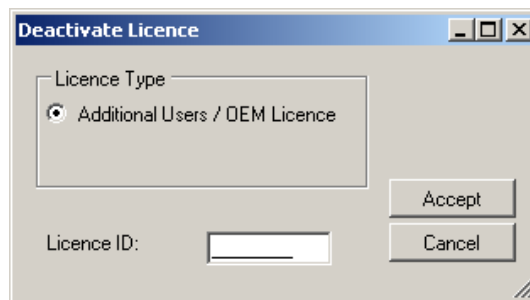


Figure 129

2. Select the 'Additional Users' checkbox, enter the Licence ID in the text box, and click **Accept**. The Deactivate Online dialog box is displayed, see Figure 130 below.

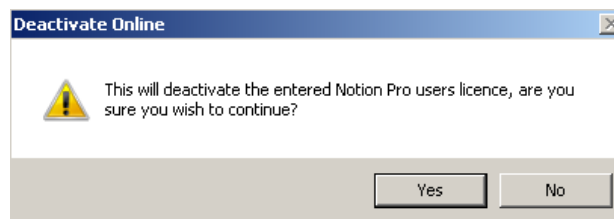


Figure 130

3. Deactivation may take a few seconds. When complete, the **Deactivate Licence** window will be displayed. See Figure 131 below.

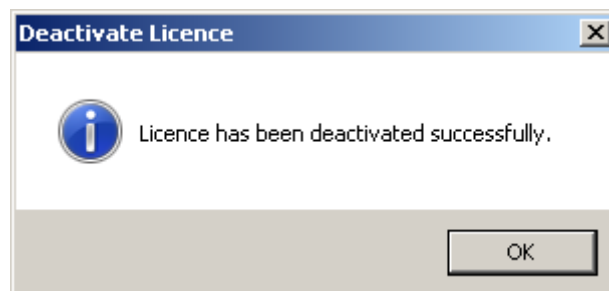


Figure 131

## 10 Database – IMC Maintenance

The menu items shown in this sub menu provide functions and tools for database maintenance operations. These functions should only be used by, or on instruction from, IMC Support personnel.

### 10.1 Upgrade

This function will upgrade the database to the latest version provided by the Database Upgrade script. It is provided for emergency recovery purposes only, and should generally not be required.