



TITAN
TYPE PF263 & PF264 EEx(d)
FLAMEPROOF / I.S.
HIGH PRESSURE SWITCHES

B.A.S.E.E.F.A. EEx(d)
 certified. Zones 1 & 2 Groups
 IIB + H₂ T6.

Ta -20 to +55°C

ATEX certified CE112GD Ex
 EExd IIB + H₂ T6 CAT 2

Ta -55 to 75°C

Intrinsically safe certified
 EExia IIC T4, T5 & T6

Stainless steel or black
 anodised aluminium IP66
 rated enclosure.

Calibrated adjustment scale

Incremental pressure ranges
 between 0.75 - 600 Bar g.



GENERAL

Incorporating a 316 stainless steel piston this high pressure switch offers reliable switching action and is housed in a stainless steel or black anodised aluminium case to IP66 standards. Suitable for set points up to 600 Bar (higher available upon request). Two microswitches set to operate simultaneously are offered as an option along with internal resistors for "end of line" and short circuit monitoring.

Wetted parts: 316 Stainless steel

Seals: Fluorocarbon

TECHNICAL

Switchcase and covers:

Stainless steel ANC4B BS3146 or black
 anodised aluminium alloy LM25TF.

Wetted parts: As specific data sheets

Microswitch form: 1 x SPDT

Contact material: Gold plated silver

Contact rating: 3A @ 30V dc inductive

3A @ 250V ac inductive

Electrical connections: Clamp type terminal
 block suitable for cable sizes 0.5 – 2.5mm²

Electrical conduit entry: M20 x 1.5 ISO
 straight entry. Adaptors available e.g. 90° angled
 or ½" NPT straight entry.

Temperature limitations:

Ambient

BASEEFA : Ta max. -20 to +55°C T max. 85°C T6

ATEX/Sira : Ta max. -50 to +71°C T max. 85°C T6

: Ta max. -50 to +75°C T max. 100°C T5

Process : -50 to 90°C (nitrile diaphragm/seals)

: -20 to 150°C (fluorocarbon diaphragm/seals)

(Temperature and level switches see specific sheets)

Certification:

BASEEFA/CENELEC : EExd IIB + H₂ T6

ATEX/Sira : CE 112GD EExd IIC T6 Ta -50 to +75°C

I.S. – Either EEx ia IIC T6 Ta = -50°C to +40°C

or EEx ia IIC T5 Ta = -50°C to +50°C

or EEx ia IIC T4 Ta = -50°C to +80°C

Accuracy: 1% BS6134:1991

PART NUMBER BREAKDOWN

A = ALUMINIUM SWITCHCASE S = ST. STEEL SWITCHCASE	PROCESS CONNECTION 31 = 1/4" BSP.P FEMALE (PF263) 32 = 1/4" NPT MALE (PF263) 33 = 1/2" BSP.P FEMALE (PF263) 34 = 1/2" NPT FEMALE (PF263) 41 = 1/2" BSP.P MALE (PF264) 42 = 1/2" NPT MALE (PF264)	67 = FLAMEPROOF 63 = I.S. CERTIFIED	ELECTRICAL ENTRY A = M20 STRAIGHT B = M20 90° ANGLED C = 1/2" NPT STRAIGHT D = 1/2" NPT ANGLED
3 – BRACKET MOUNTED 4 – STEM MOUNTED			

P F 2 6 3 S 1 B / 0 W 3 4 F 2 2 C / 6 7 S 6 M A

1 = 1 X SPDT MICROSWITCH 2 = 2 X SPST MICROSWITCH	SPRING COLOUR (see range sheet)	PISTON SIZE (see range sheet)
B = BASEEFA APPROVAL A = AAS (AUSTRALIA) APPROVAL O = I.S. CERTIFIED		M = STANDARD BKT E = 2" STANDPIPE BKT X = COVER PLATE PF264

ADJUSTMENT RANGES

ADJUSTMENT RANGE (BAR G)	ADJUSTMENT RANGE (PSI)	MAX. WORKING PRESSURE (BAR G)	SWITCHING DIFFERENTIAL (BAR G)	SPRING CODE	PISTON SIZE
0.75 – 5.75	10 – 80	700	0.45 – 1.12	R	6
2.0 – 14.0	30 – 200	700	0.70 – 1.30	G	6
10 – 58	140 – 840	700	0.60 – 1.00	W	6
30 – 110	450 – 1650	700	1.40 – 2.50	W	4
80 – 240	1160 – 3480	700	4.30 – 9.40	X	3
100 – 320	1450 – 4640	700	3.60 – 9.10	W	2
180 – 420	2600 – 6100	700	8.00 – 16.0	X	2
200 – 600	2900 – 8700	700	16.0 – 32.0	W	1

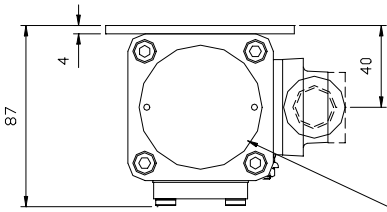


The Pyropress Engineering Company Limited
 Bell Close, Newnham Industrial Estate
 Plympton, Plymouth, PL7 4JH
 Tel : +44 (0)1752 339866
 Fax : +44 (0)1752 336681
 e-mail : sales@pyropress.com
www.pyropress.com

DRAWINGS

DIMENSIONS IN MILLIMETRES

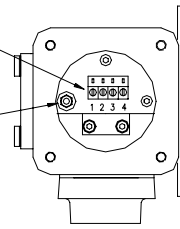
TYPICAL ARRANGEMENT DRAWING FOR REFERENCE ONLY



SWITCH APPROVALS LABEL

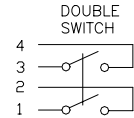
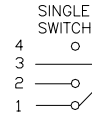
4th TERMINAL SUPPLIED WITH 2 MICROSWITCH ASSEMBLY ON REQUEST.

INTERNAL EARTHING CONNECTION



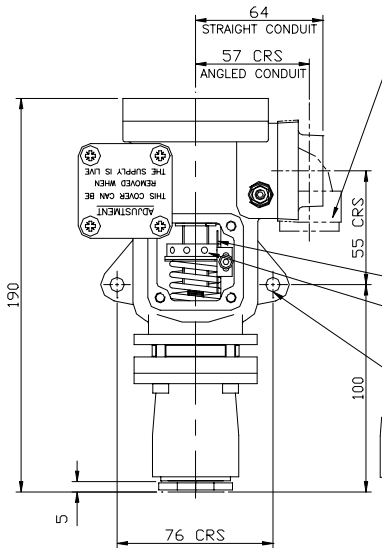
VIEW WITH TOP COVER REMOVED

INDUCTIVE RATING
5 AMP 250V AC
3 AMP 30V DC



1 & 2 CLOSE ON RISE IN PRESSURE

1 & 2 CLOSE ON RISE IN PRESSURE
3 & 4 CLOSE ON RISE IN PRESSURE



ALTERNATIVE CONDUIT ENTRY MAY BE ROTATED THROUGH 3 x 90° RIGHT OR LEFT HAND ENTRY AVAILABLE

EXTERNAL EARTHING CONNECTION

SCALE
ADJUSTING NUT

2 FIXING HOLES $\phi 7$

SEALING BAND
PISTON SUB-ASSEMBLY

PROCESS ENTRY
1/4" BSP/NPT
INTERNAL THREAD

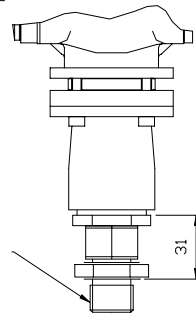
PROCESS ENTRY
1/2" BSP/ 1/2"NPT
INTERNAL THREAD

PF263 SWITCH

TOP COVER

ELECTRICAL CONDUIT ENTRY. STANDARD M20 x 1.5

MOUNTING BRACKET (PF263 MODELS) OR BLANKING PLATE (PF264 MODELS)



1/2"BSP/ 1/2"NPT EXTERNAL THREAD

PF264 SWITCH

TITAN HIGH PRESSURE SWITCH