

DPR 180

180 MM DIGITAL STRIP CHART RECORDER

43-DR-03-11 March 2010

PRODUCT SPECIFICATION SHEET

OVERVIEW

The DPR180 recorder offers the best price/performance in the market today of any 180mm (7 inch) wide chart recorder.

The recorder is able to monitor up to 24 analogue inputs and up to 36 digital inputs.

It produces clear, fully documented charts at any speed, and in different formats, providing the best, most flexible presentation of the process data.

The large, bright display, with fluorescent chart illumination, provides easy viewing of the data and chart. The flexible product configuration in 5 languages makes it easy to set up and use.

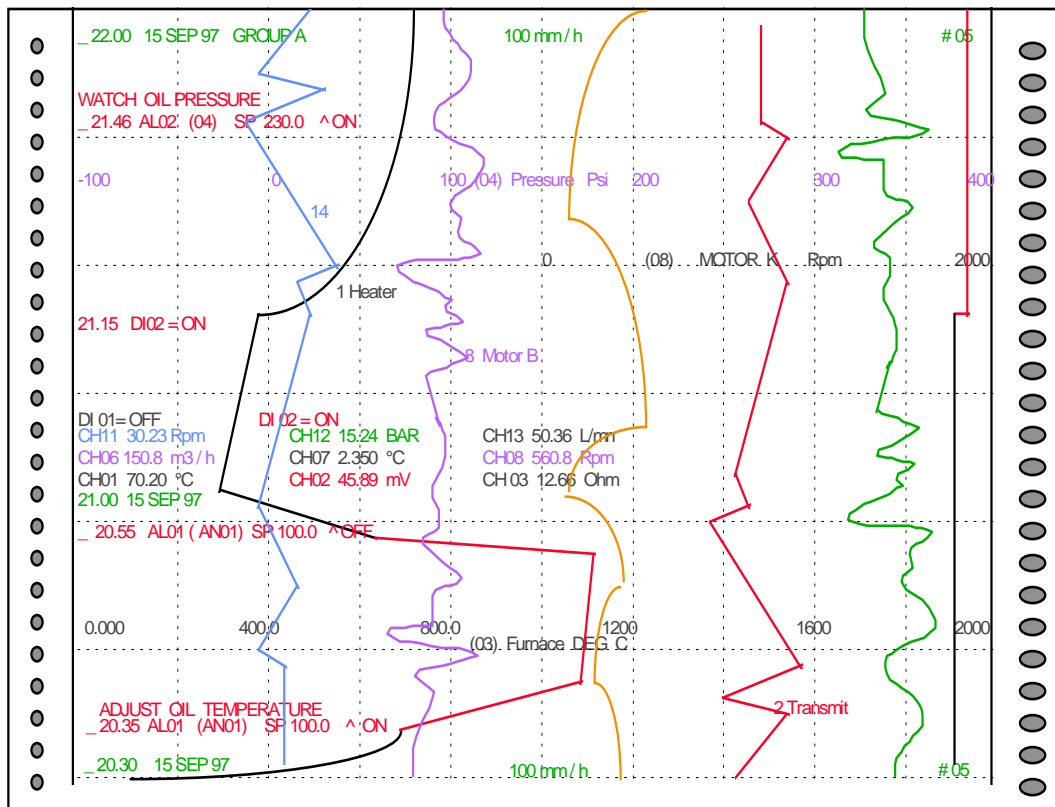
The DPR180 is especially suited to match the needs of chemical, pharmaceutical, power generation, metals processing, environmental monitoring, and other applications where the best chart resolution is required.



MAIN FEATURES

- 180 mm (7 inch) chart width.
- 0.05% accuracy full scale. Applicable on a wide choice of actuations and ranges.
- Each input span is adjustable within the selected range, with up to 2 ranges per input.
- Universal (T/C, RTD, mV, mA, V), or linear input (mV, mA, V).
- Fast input scanning (20/sec.)
- Fluorescent display of 2 row of 16 digits, with adjustable brightness.
- Roll or fan fold chart with same cassette. Fully documented chart with trace color assign, thin/thick trace, alarm in red tagging, zooming, zoning, trend, tabular, messages.
- Channel groups available.
- I/O capability : up to 24 analogue inputs, up to 36 output relays, up to 36 digital inputs, up to 8 retransmitted signals.
- Advanced math package
- Fully configurable through the front keys, front PC jack or communication link.
- 2 chart speeds configurable from 1 to 5000 mm/h (0.04 to 200 inch/hr).
- Up to 48 customer messages of 50 characters each.
- Firmware upgradable by PC (Flash memory).
- Input calibration traceable per channel, or channel group.
- Up to 2 custom-input characterizations available.
- Up to 48 alarm set points freely assignable on analogue inputs, maths, communication.
- Up to 36 internal output relays assignable on analogue inputs, maths, events, logic inputs.
- Configurable Periodic chart documentation.
- Periodic report.
- Universal power supply : 100 to 240 Vac/dc.
- Up to 8 retransmitting outputs (4 to 20 mA).
- Universal comm. output: ASCII in RS232, 422/485. MODBUS RTU in RS422/485. ETHERNET/MODBUS RTU Interface,
- Metal door/case, IP55 rated

Trend printing mode



The trend printing mode offers a highly flexible documentation which includes :
 Date and Time, Alarm reporting with : Time, Alarm SP, Channel #, Set Point value, Alarm, Chart certification,
 Chart Speed with engineering unit , User defined message, Range subdivision, Recorder identification, Red
 on alarm, Chart range, Channel reference with tag name (Configurable), Thick channel trace, Process value,
 Channel tag name, Zone format, Channel reference, Engineering Unit, Tabular print out.

Tabular printing mode

DI01= OFF	DI02=ON	CH08 560.0 Rpm : MOTOR B	CH09 127.3 Wh POWER
CH07 2350 °C BURNER		CH05 2358 °K FURNACE	CH06 150.8 M3/h FLOW
CH04 258.1 PSI PRESSURE		CH02 45.90 mV TRANSMIT	CH03 12.70 OHM COIL
CH01 70.20 °C HEATER			
23.50 15 SEP 97			
DI01= OFF	DI02=OFF	CH08 560.0 Rpm : MOTOR B	CH09 127.3 Wh POWER
CH07 2350 °C BURNER		CH05 2358 °K FURNACE	CH06 150.8 M3/h FLOW
CH04 258.1 PSI PRESSURE		CH02 45.90 mV TRANSMIT	CH03 12.70 OHM COIL
CH01 70.20 °C HEATER			
23.40 15 SEP 97			
DI01= OFF	DI02=ON	CH08 560.0 Rpm : MOTOR B	CH09 127.3 Wh POWER
CH07 2350 °C BURNER		CH05 2358 °K FURNACE	CH06 150.8 M3/h FLOW
CH04 258.1 PSI PRESSURE		CH02 45.90 mV TRANSMIT	CH03 12.70 OHM COIL
CH01 70.20 °C HEATER			
23.30 15 SEP 97			

- **Easy to install ... easy to use ... easy to maintain :** The DPR180 with its modular design and rugged construction, simplifies maintenance. Many of the electronic assemblies and mechanical parts are common with the DPR250 thus reducing spare parts inventory. Its operator - friendly configuration keys, the sophisticated display, easy product configuration and customized charts insure accurate monitoring and recording of the process.

- **Easy access :** the access to the chart, and the ink cartridge is very easy. The simple, modular construction of plug-in modules, along with the low cost and extra long life of consumables, further reduces the maintenance cost.

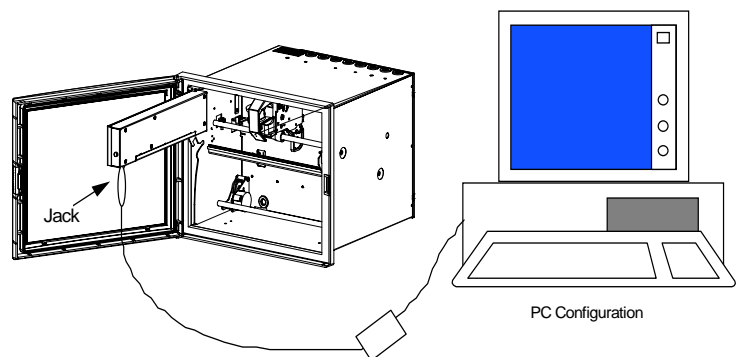
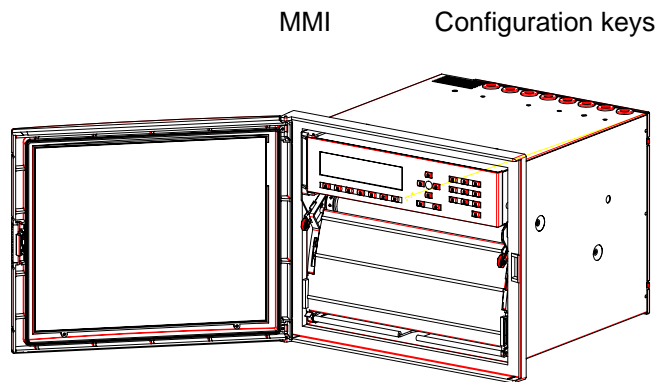
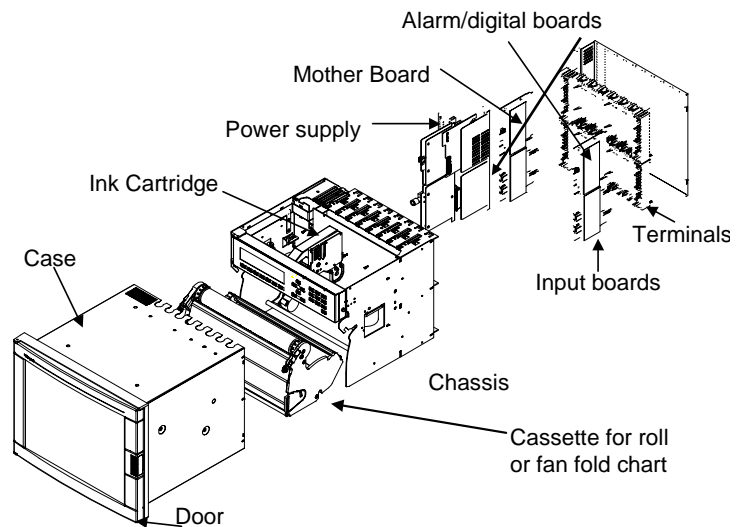
- **Universal power supply module :** the universal switching mode power supply simplifies installation of the recorder by accepting voltages from 100 to 230 V ac/dc, 50/60 Hz.

- **Local configuration :** A user friendly program with local language prompts (English, French, German, Italian or Spanish) permits full configuration of the recorder using the front keys. A multilevel password protects against unauthorized changes of product configuration.

- **Digital Display :** The Vacuum fluorescent dot matrix display, is 2 lines of 16 digits, 8.5 mm (0.33") high. This allows for display flexibility and provides clear operator information. Display illumination is configurable to allow for improved viewing based on customer requirements.

- **Chart illumination :** The chart illumination makes traces and current printed values immediately visible, even from a distance and in any ambient light condition.

- **Two paper types :** Either chart roll or fan fold paper can be installed into the common chart cassette. The large capacity cassette holds 35 meters (115ft) of chart paper, reducing the maintenance time required between chart changes. Uses the same ink cartridge as the DPR250, thus providing for common consumables.



PC configuration : By using the front communication jack, the recorder can be configured from a personal computer, using an optional PC interface module. In addition to configuration, the PC interface provides the ability to upload, download, modify, store the recorder configuration and initiate service diagnostics as well as being able to upgrade the recorder's product firmware. The PC Configuration software allows the creation of a custom characterization of up to 50 points for special ranges.

DPR 180 FUNCTIONAL SPECIFICATIONS

Technical data

DPR180

Technology		Microprocessor-based (32 bits), with non volatile memory. Flash memory for product software upgrade, or specials, via the front jack.
Analogue inputs	<i>No. of inputs</i>	From 4 up to 24 in groups of 4.
	<i>Input boards</i>	2 types : 4 linear inputs per board : mV, V, mA 4 universal inputs per board : mV, V, mA, T/C, RTD, Ohms
	<i>Signal source</i>	Thermocouple with cold junction compensation, or with remote compensation temperature configurable between 0 to 80°C (32 to 176°F) Line resistance up to 1000 Ohms for T/C, mV, mA, V RTD Pt100 Ohms, 3 wire connections, 40 Ohms balanced max.
	<i>Basic math functions</i>	Square root extraction or channel differential are standard.
	<i>Filter</i>	Digital filter configurable per input from 0 to 99 sec.
	<i>Field calibration</i>	Channel calibration 0 to 100% span (or calibration of a group of identical channels) can be made to certify sensor loop.
	<i>Burnout</i>	T/C, mV, V (except following ranges) configurable to upscale, downscale or none Volt : -500, 0, 500 mV ; -1, 0, 1V ; -2, 0, 2V ; -5, 0, 5V ; 0, 10V ; -10, 0, 10V : Inherent to Zero volt. RTD : inherent upscale ; mA : inherent downscale.
	<i>Scanning time</i>	2 channels = 105 msec, 4 ch = 210 msec, 8 ch = 420 msec, 12 ch = 630 msec, 16 ch = 840 msec, 20 ch = 1 sec, 24 ch = 1.2 sec
	<i>Input impedance</i>	10 MOhms for T/C and mV inputs; > 1 MOhm for V input
	<i>Stray rejection</i>	Series mode > 60 dB. Common mode at 120 Vac > 130 dB
Display	<i>Fluorescent display</i>	2 rows of 16 digits, 8.5 mm (.33 inch) high, matrix display. Can display 1 or 2 PV values (5 digits) per line, engineering units (5 digits), alarm status, tag name, math, speed, event messages etc.
	<i>Brightness</i>	The display brightness is configurable
Record	<i>Chart</i>	180 mm (7.09") width
	<i>Traces</i>	Up to 24 traces, configurable in 6 colors, thin or thick traces, plus digital traces
	<i>Trace assignment</i>	Traces are configurable on analogue inputs, math, communication or digital inputs
	<i>Scaling</i>	Per input, up to 2 analogue scales can be configured to be printed on the chart, with engineering units, channel reference and tag name. Each input can be configured independently. The scale can be linear, with up to 10 sub-divisions
	<i>Print mode</i>	Trend : Up to 24 traces, with periodic chart documentation configurable in time, from 1 minute to 24 hours with date, time, scales, digital PV print-out over traces or on blank paper, with channel reference, digital traces, alarm messages and customer message. Tabular : Tabular print-out configurable in time from 1 to 1440 minutes with channel number, tag name, digital PV value, engineering unit, alarm status.
	<i>Zoning</i>	Each input can be scaled between 0 to 100% of the chart (minimum zone = 20%).
	<i>Printing group</i>	Up to 2 groups of channels can be defined, with printing selection by : Alarm, logic inputs or keypad
	<i>Pen carriage speed</i>	1.4 second full scale
Chart length		Roll or fan fold chart 35 meters (115 ft)
Chart speed		1 or 2 chart speed, fully configurable, selected by : Logic input, alarm communication, front key.
	<i>Speed setting</i>	Speeds 1 and 2 are configurable from 1 up to 5000 mm/hr (0.04 to 200 in/hr)
	<i>Resolution</i>	Chart resolution is 0.19 mm (0.0075")
Product configuration	<i>Access</i>	The configuration can be accessed using front keys, PC configurator, or ASCII communication with LPCS software.
	<i>Protection</i>	2 password levels protect the unit configuration from unauthorized access. Level 1 = limited access, Level 2 = full protection.
	<i>Front keyboard</i>	Configurable and alphanumeric keys allow the operator to change the recorder operation
	<i>PC configuration</i>	Through the front jack, the unit can be configured from a PC using a Honeywell PC interface. This provides the facility to copy the product configuration, modify, store, download or upload the configuration, access service diagnostics, and also to upgrade the recorder firmware.

Logic inputs (optional)	<i>Number of inputs</i>	Up to 36 input contacts, organized in groups of 6 contacts per card Dry contacts (5 mA - 5 Vdc)
	<i>Actions</i>	Change speed 1 to speed 2, tab interval 1 to 2, digital print-out, print message, print inhibit, event traces, print math calculations. Change range, start/stop math operations Change print group, actuate a relay output Up to 20 event traces are configurable in color and position from 0 to 100% of the chart
Alarms	<i>Set points</i>	Up to 48 set points, freely assignable to analogue inputs, math or communication.
	<i>Alarm type</i>	High, low, change rate low, change rate high, change rate high-low or deviation with configurable alarm occurrence.
	<i>Actions</i>	Can trigger a message, print channel in red in alarm, print in alarm, change the range, change the speed/tabular, print digital PV's Start/stop the math, select the print group, actuate a relay output
	<i>Relay output</i> (optional)	Up to 36 internal relays : 2 A, 250 Vac on resistive load. 1 SPST contact output, normally closed contact (NC), configurable to normally open (NO). Configurable alarm relay acknowledgement.
Alarm event		The recorder can be configured to display events such as : 1 alarm, 1 channel in burnout, paper out, battery fail, communication interrupted
Alphanumeric documentation	<i>Messages</i>	Up to 48 freely assignable messages of 50 characters each Can be printed with or without date and time over the traces, by alarms, logic inputs, communication, when alarm is ON, OFF or ON/OFF.
	<i>Process Values</i>	Periodic digital print-out at time intervals configurable from 1 minute to 24 hours or through alarms, digital inputs, communication.
	<i>Tag name</i>	Each channel can have up to an 8 character name
	<i>Chart scales</i>	each can be configured from 0 to 9 subdivisions
	<i>Periodic reports</i>	startup time and period configurable Min, Max, average of selected channels or (math computation) are printed in alphanumeric. Report size max. = 20 lines.
User-Defined Actuations		Up to 50 breakpoints can be used to define a custom range/actuation. Up to 2 ranges can be defined using the PC Configurator. Polynomial characterization available as special.
Mathematic package (optional)		Many functions are available such as : Basic math, SqRt, Fo, mass flow totalization, energy consumption, averages, timers, min., max., carbon potential, alarm/logic pulse totalization, RH. The calculations are stored during power interruption.
	<i>Actions</i>	The results can be recorded as a trace, a tabular print-out, a periodic report, sent to the communication link, or used to generate a current output signal
Communication (optional)	<i>Protocols</i>	ASCII in RS232, 422/485. MODBUS RTU in RS422/485. ETHERNET/MODBUS RTU Interface, Interface configured with standard IP address and is utilized with 3 rd party software that provides TCP/Modbus driver and OPC capability.
PCMCIA (optional)	<i>Actions</i>	Archiving of PV traces, alarms and events with file names, file size is 24Mbytes max. Logging time selectable from 1 second up to 30 minutes.
	<i>PC Analysis</i>	TrendManager Pro provides an easy and powerful way to analyze trend, alarm and event files as well as to export them in spreadsheet format (CSV).
Retransmitting signals (optional)	<i>Current output</i>	Up to 8 signals, 4 to 20 mA dc, can be generated by the recorder (Organized in blocks of 4 output signals) Max. Line impedance = 800 Ohms These can be configured for : analogue traces, math calculations, PV's from the communication link. The zero and span are configurable.

Clock timer	<i>Format</i>	Year, month, hour, minute can be set	
	<i>Power interruption</i>	Battery backed (10 years time, 3 years power off)	
	<i>Accuracy</i>	10 ⁻⁵ at reference conditions	
Power supply		100 to 230 Vac/dc, (24 Vac/dc on request). Consumption = 100 VA max	
Packaging	<i>Weight</i>	18 Kg max. (38 lbs)	
	<i>Front bezel</i>	310 x 317 mm (12.2 x 12.5 inches)	
	<i>Panel cutout</i>	278 x 278 mm (10.9 x 10.9 inches)	
	<i>Depth</i>	320 mm (12.6 inch) including the rear cover	
	<i>Front protection</i>	IP55	
	<i>Lock</i>	Latch, optional key DIN 43832-N	
	<i>Door</i>	Die cast aluminum : Dark gray or black (optional), door opens to 180°	
	<i>Mounting</i>	Panel mounting ± 30° from the horizontal	
	<i>Wiring</i>	Screw terminals : Terminal blocks plug on to the boards at the back of the recorder	
Noise immunity		<p>This product is in conformity with the protection requirements of the following European Council Directives:</p> <ul style="list-style-type: none"> • 73/23/EEC, the Low Voltage Directive and 89/336/EEC, the EMC Directive. Conformity of this product with any other "CE Mark" Directive(s) shall not be assumed. • EMC Classification: EN 50081-2-1993 Electromagnetic Compatibility – General Emission Standard, Part 2: Industrial Environment. • EN 50082-2-1995 Electromagnetic Compatibility – General Immunity Standard, Part 2: Industrial Environment. 	
Safety protection		Complies with EN61010-1 and UL 3121 for process control instrumentation. Pollution Degree 2. Installation Category II	
Electrical insulation	<i>Input/input</i> <i>Input/logic/grd</i> <i>alarm relay/grd</i> <i>Input/line;</i> <i>Line/grd;</i> <i>Cur output/grd</i>	<p>Continuous operation at 280 Vac or 400 Vdc (except for RTD)</p> <p>Test voltage 2.1 kV dc for 1 minute</p> <p>Test voltage 3,25kV dc for 1 minute</p> <p>Test voltage 3,25kV dc for 1 minute</p> <p>Test voltage 3,25kV dc for 1 minute</p> <p>Test voltage 3,25kV dc for 1 minute</p> <p>Test voltage 500 Vdc for 1 minute</p>	
Temperature	<i>Ambient</i>	0 to 50°C (32 to 132°F), 0 to 40°C (32 to 104°F) for fan fold paper	
	<i>Storage</i>	-40 to 70°C (-40 to 160°F)	
Humidity	<i>Roll chart</i>	10 to 90% RH non-condensing	
	<i>Fan fold</i>	15 to 80% RH non-condensing	
Vibrations Accuracy		Frequency 10 to 60 Hz, amplitude 0.07 mm, 60 to 150 Hz acceleration 1g	
	<i>Reference conditions</i>	<p>Temperature = 23°C ± 2°C (73°F ± 3°F)</p> <p>Humidity = 65% RH ± 5%</p> <p>Line voltage = Nominal ± 1%</p> <p>Source resistance = 0 Ohm</p> <p>Series mode and common mode = 0 V</p> <p>Frequency = Nominal ± 1%</p>	
	<i>Accuracy</i>	<p>Field calibration accuracy 0.05% of the selected range (IEC 873),</p> <p>Chart resolution : 0.18 mm (0.007").</p> <p>Cold junction accuracy : ± 0.5°C (32.9°F)</p>	
Rated limits and associated drifts	Parameters	Rated limits	Influence on accuracy
	<i>Temperature</i>	0 to 50°C (32 to 120°F)	0.15% per 10°C (50°F) of change (note A) Cold junction 0.3°C/10°C (32.5°F /50°F)
	<i>Supply voltage</i>	85 to 250 V	No influence
	<i>Source resistance</i>	T/C, mV	6 µV per 400 Ohms of line resistance max. = 1000 Ohms.
		RTD	0.1°C (33.8°F) per Ohm in each wire balanced leads. 40 Ohms max. (From 0 to 400 °C (32 to 752°F)
	<i>Humidity</i>	10 to 90% RH at 25°C	0.1% max
	<i>Long-term stability</i>		0.1% per year

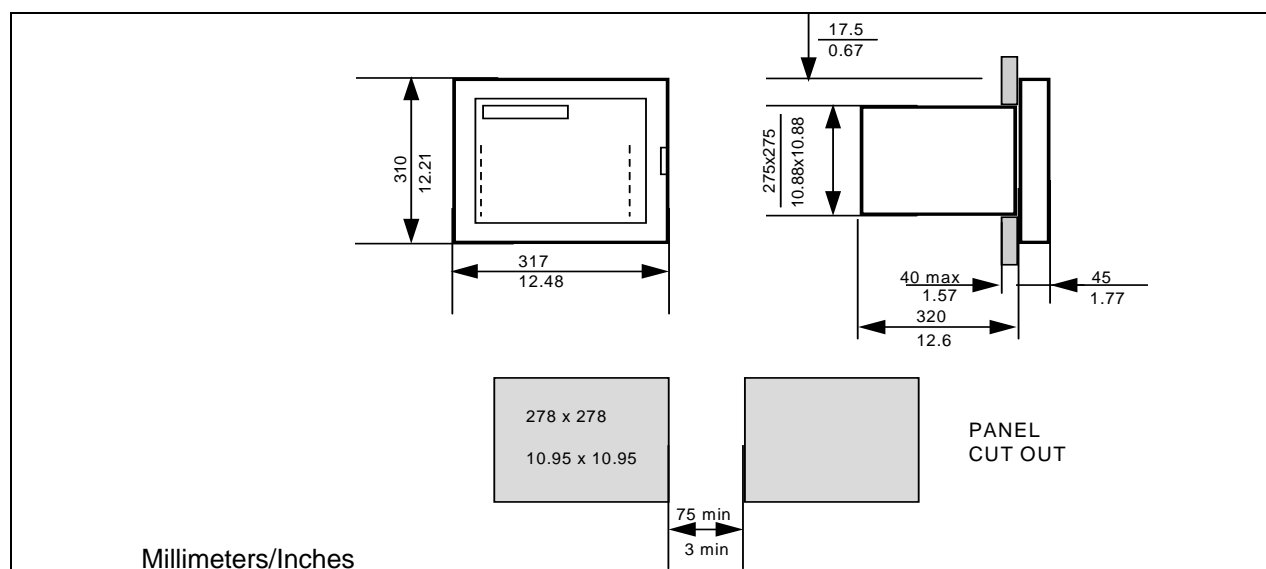
Linear	RTD/Ohms		Thermocouples		
mV 0 to 10 mV -10, 0, +10 mV 0, 20 mV -20, 0, +20 mV 0, 50 mV -50, 0, +50mV 10, 50 mV 0, 100 mV -100, 0, +100mV 0, 500 mV -500, 0, +500mV	Pt 100 at 0°C -50, 0, 150°C -58, 0, 302°F 0, 100°C** 32, 212°F** 0, 200°C 32, 392°F 0, 400°C 32, 752°F -200, 0, 800°C -328, 0, 1472°F	J I S -50, 0, 150°C -58, 0, 302°F 0, 100°C** 32, 212°F** 0, 200°C 32, 392°F 0, 400°C 32, 752°F -200, 0, 500°C -328, 0, 932°F	J -50, 0, 150°C J -58, 0, 302°F J 0, 400°C J 32, 752°F J -200, 0, 870°C J -328, 0, 1598°F L -50, 0, 150°C L -58, 0, 302°F L 0, 400°C L 32, 752°F L -200, 0, 870°C L -328, 0, 1598°F	S 0, 1600°C S 32, 2912°F S -20, 0, 1760°C S -4, 0, 3200°F N 0, 400°C N 32, 752°F N 0, 800°C N 32, 1472°F N 0, 1200°C N 32, 2192°F N -200, 0, 1300°C N -328, 0, 2372°F	U -50, 0, 150°C U -58, 0, 302°F U 0, 150°C U 32, 302°F U 50, 150°C U 122, 302°F U -200, 0, 400°C U -328, 0, 752°F NiMo 0, 1400°C NiMo 32, 2552°F MoCo 0, 1400°C MoCo 32, 2552°F
Volt 0, 1 V 0, 2 V -2, 0, +2V 0, 5 V -5, 0, +5 V 1,5 V 0, 10 V -10, 0, +10 V	Ni 50 ohms -80, 0, 320°C -112, 0, 608°F Ni 508 ohms -80, 0, 150°C -112, 0, 302°F Cu 10 Ohms -20, 0, 250°C** -4, 0, 482°F	Ref. range 0, 320°C 32, 608°F	K 0, 400°C K 32, 752°F K 0, 800°C K 32, 1472°F K 0, 1200°C K 32, 2192°F K -200, 0, 1370°C K -328, 0, 2498°F	T -50, 0, 150°C T -58, 0, 302°F T 0, 150°C T 32, 302°F T 50, 150°C T 122, 302°F T -200, 0, 400°C T -328, 0, 752°F	W-W26 -20, 0, 2320°C -4, 0, 4208°F W5-W26 -20, 0, 2320°C -4, 0, 4208°F PR 20-40 0, 1800°C 32, 3272°F B 40, 1820°C B 104, 3308°F
mA 0, 20 mA 4, 20 mA	Ohms 0, 200 ohms 0, 2000 ohms		R -20, 0, 1760°C R -4, 0, 3200°F		Ref. range 600, 1800°C 1110, 3300°F Ref. range 400, 1820°C 752, 3308°F

Notes :

1. Ranges with ** have an accuracy of 0.25%.
2. For non linear temperature transmitter, the transmitter range MUST be identical to the input range of the recorder.
3. The mA inputs has to be connected on a 250 Ohms input across the input terminals.
4. 0.5% per 10°C on Cu 10 ohms; 0.3% per 10°C on Pt100< 200°C
5. The Reference range is the same as the stated range unless noted.

NOTE: Make sure you are an "Administrator" before installing the product.

- Windows 7 Professional, Ultimate or Enterprise OS 32-bit or 64-bit edition requires 1 GHz Processor, 2GB RAM and 15GB Hard Disk Space
- Windows XP SP1 professional requires a 233 Mhz CPU with 128 MB of RAM
- Windows 2000 SP4 professional requires a Pentium 133 Mhz CPU with 64 MB of RAM
- Windows NT Workstation 4.0 SP5 requires a 486 Mhz CPU with 32 MB of RAM
- Windows 98SE requires a Pentium 150MHz processor with 32 MB of RAM
- 10MB free on your hard disk for the PC Configuration software.
- Recommended video resolution: 800x600 or higher.



Warranty/Remedy

Honeywell warrants goods of its manufacture as being free of defective materials and faulty work-manship. Contact your local sales office of warranty information. If warranted goods are returned to Honeywell during the period of coverage, Honeywell will repair or replace without charge those items it finds defective. ***The foregoing is Buyer's sole remedy and is in lieu of all other warranties, expressed or implied, including those of merchantability and fitness for a particular purpose.*** Specifications may change without notice. The information we supply is believed to be accurate and reliable as of printing. However, we assume no responsibility for its use. While we provide application assistance personally, through our literature and the Honeywell website, it is up to the customer to determine the suitability of the product in the application.

Sales and Service

For application assistance, current specifications, pricing, or name of the nearest Authorized Distributor, contact one of the offices below.

ASIA PACIFIC

Control Products

Asia Pacific Headquarters
Phone: +(65) 6355-2828
Fax: +(65) 6445-3033

Asia Pacific Global Technical Support Field Instruments

Phone: +65 6580 3156
Fax: +65 6445-3033
Process Instruments
Phone: (603) 76950 4777
Fax: (603) 7958 8922

Australia

Honeywell Limited
Phone: +(61) 7-3846 1255
FAX: +(61) 7-3840 6481
Toll Free 1300-36-39-36
Toll Free Fax:
1300-36-04-70

China – PRC - Beijing

Honeywell China Inc.
Phone: +(86-10) 8458-3280
Fax: +(86-10) 8458-4650

China – PRC - Shanghai

Honeywell China Inc.
Phone: (86-21) 5257-4568
Fax: (86-21) 6237-2826

China – PRC - Chengdu

Honeywell China Inc.
Phone: +(86-28) 8678-6348
Fax: +(86-28) 8678-7061

China – PRC - Xi'an

Honeywell China Ltd - Xi'an.
Phone: +(86-29) 8833-7490
Fax: +(86-29) 8833-7489

China – PRC - Shenzhen-

Honeywell China Inc.
Phone: +(86) 755-2518-1226
Fax: +(86) 755-2518-1221

Indonesia

PT Honeywell Indonesia
Phone: +(62) 21-535-8833
FAX: +(62) 21-5367 1008

India Automation India Ltd.

Honeywell Ltd.
Phone: +(91) 5603-9400
Fax: +(91) 5603-9600

Japan

Honeywell Inc.
Phone: +(81) 3 6730 7150
Fax: +(81) 3 6730 7228

Malaysia

Honeywell Engineering
Sdn Bhd
Phone: +(60-3) 7950-4776
Fax: +(60-3) 7958-8922

New Zealand

Honeywell Limited
Phone: +(64-9) 623-5052
Fax: +(64-9) 623-5060
Toll Free (0800) 202-088

Philippines

Honeywell Systems
(Philippines) Inc.
Phone: +(63-2) 633-2830-31/
636 1661-62
Fax: +(63-2) 638-4013

Singapore

Honeywell Pte Ltd.
Phone: +(65) 6580 3278
Fax: +(65) 6445-3033

South Korea

Honeywell Korea Co Ltd
Phone: +(822) 799 6315
Fax: +(822) 792 9015

Thailand

Honeywell Systems
(Thailand) Ltd.
Phone: +(662) 693-3099
FAX: +(662) 693-3089

Taiwan R.O.C.

Honeywell Taiwan Ltd.
Phone: +(886-2) 2245-1000
FAX: +(886-2) 2245-3241

SE Asia Countries

see Honeywell Pte Ltd
(Singapore)
for: Pakistan, Cambodia,
Guam, Laos, Myanmar,
Vietnam, East Timor

SE Asia Countries

see Honeywell Automation
India Ltd for:
Bangladesh
Nepal
Sri Lanka

EUROPE

Austria

Honeywell Austria GmbH
Phone: +43 (316)400123
FAX: +43 (316)40017

Belgium

Honeywell SA/NV
Phone: +32 (0) 2 728 24 07
FAX: +32 (0) 2 728 22 45

Bulgaria

Honeywell EOOD
Phone: +(359) 2 40 20 900
FAX: +(359) 2 40 20 990

Czech Republic

Honeywell spol. s.r.o.
Phone: +420 242 442 232
FAX: +420 242 442 131

Denmark

Honeywell A/S
Phone: +(45) 39 55 55 55
FAX: +(45) 39 55 55 58

Finland

Honeywell OY
Phone: +358 (0)20752 2753
FAX: +358 (0) 20752 2751

France

Honeywell SA
Phone: +33 (0)1 60198075
FAX: +33 (0)1 60198201

Germany

Honeywell AG
Phone: +49 (69)8064-299
FAX: +49 (69)806497336

Hungary

Honeywell Kft.
Phone: +36-1-451 4300
FAX: +36-1-451 4343

Italy

Honeywell S.p.A.
Phone: +390292146307
FAX: +39 0292146377

The Netherlands

Honeywell B.V.
Phone: +31 (0) 20 5656200
FAX: +31 (0) 20 5656210

Norway

Honeywell A/S
Phone: (45) 39 55 55 55

Poland

Honeywell Sp. zo.o
Phone: +48-22-6060900
FAX: +48-22-6060901

Portugal

Honeywell Portugal Lda
Phone: +351 21 424 5000
FAX: +351 21 424 50 99

Romania

Honeywell Bucharest
Phone: +40 (0) 21 2316437
FAX: +40 (0) 21 2316439

Russian Federation (RF),

ZAO "Honeywell"
Phone: +7 (095) 796 98 00
FAX: +7 (495) 797 99 64

Slovak Republic

Honeywell s.r.o.
Phone: +421-2-58247 410
FAX: +421-2-58247 415

Spain

Honeywell S.A.
Phone: +34 (0)91313 61 00
FAX: +34 (0)91313 61 30

Sweden

Honeywell AB
Phone: +(46) 8 775 55 00
FAX: +(46) 8 775 56 00

Switzerland

Honeywell AG
Phone: +41 18552448
FAX: +(41) 1 855 24 45

Turkey

Honeywell Turkey A.S.
Phone: +90 216 578 71 00
FAX: +90 216 575 66 35

Ukraine

Honeywell
Tel: +380-44-201 44 74
Fax: +380-44-201-44-75

United Kingdom

Honeywell Control Systems
Ltd.
Phone: +44 (0)1344
655251
FAX: +44 (0) 1344 655554

MIDDLE EAST

Abu Dhabi U A E

Middle East Headquarters
Honeywell Middle East Ltd.
Phone: +971 2 4041246
FAX: +971 2 4432536

Sultanate of Oman

Honeywell & Co Oman LLC
Phone: +968 24 701153/
Ext.33
FAX +968 24 787351

Saudia Arabia

Honeywell Turki Arabia Ltd
Jubail Office
Phone: +966-3-341-0140
Fax: +966-3-341-0216
Honeywell - ATCO
Dammam Office
Phone: 0096638304584
Fax: 0096638338059

Kuwait

Honeywell Kuwait KSC
Phone: +965 242 1327 to
30
Fax: +965 242 8315
And
Phone: +965 326
2934/1821Fax: +965 326
1714

AFRICA

Mediterranean & African Distributors

Honeywell SpA
Phone: +39 (02) 250 10 604
FAX: +39 (02) 250 10 659

South Africa (Republic of) and sub saharan

Honeywell Southern Africa
Honeywell S.A. Pty. Ltd.
Phone: +27 11 6958000
FAX +27 118051504

NORTH AMERICA

Canada

Honeywell LTD
Phone: 1-800-737-3360
FAX: 1-800-565-4130

USA

Honeywell Process
Solutions,
Phone: 1-800-423-9883 or
1-800-343-0228

Email: ask-ssc@honeywell.com

SOUTH AMERICA

Argentina

Honeywell S.A.I.C.
Phone: +(54-11) 4383-3637
FAX: +(54-11) 4325-6470

Brazil

Honeywell do Brasil & Cia
Phone: +(55-11) 7266-1900
FAX: +(55-11) 7266-1905

Chile

Honeywell Chile, S.A.
Phone: +(56-2) 233-0688
FAX: +(56-2) 231-6679

Mexico

Honeywell S.A. de C.V.
Phone: +(52) 55 5259-1966
FAX: +(52) 55 5570-2985

Puerto Rico

Honeywell Inc.
Phone: +(809) 792-7075
FAX: +(809) 792-0053

Trinidad

Honeywell Inc.
Phone: +(868) 624-3964
FAX: +(868) 624-3969

Venezuela

Honeywell CA
Phone: +(58-2) 238-0211
FAX: +(58-2) 238-3391

Honeywell

Honeywell Process Solutions

1860 West Rose Garden Lane
Phoenix, Arizona 85027
Phone: 1-800-423-9883 or 1-800-343-0228
www.honeywell.com/ps

43-DR-03-11

March 2010

©2009-10 Honeywell International Inc.