

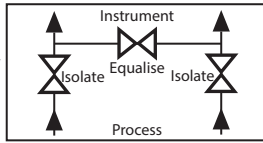
MODEL - V3



REMOTE MOUNT (Pipe to Pipe) THREE VALVE MANIFOLD 413 bar (6000 psi)

ISOLATE	Red
VENT	Yellow
EQUALIZE	Blue

Valve Colour Coding



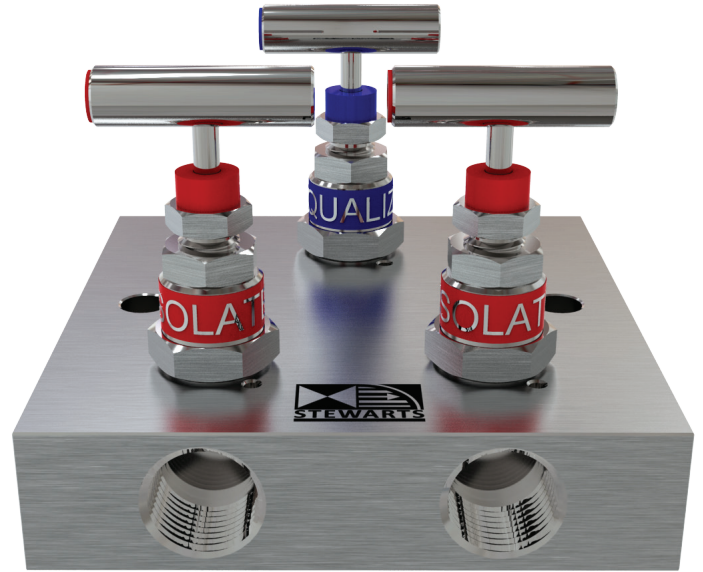
APPLICATION

Using the 3-valve manifold

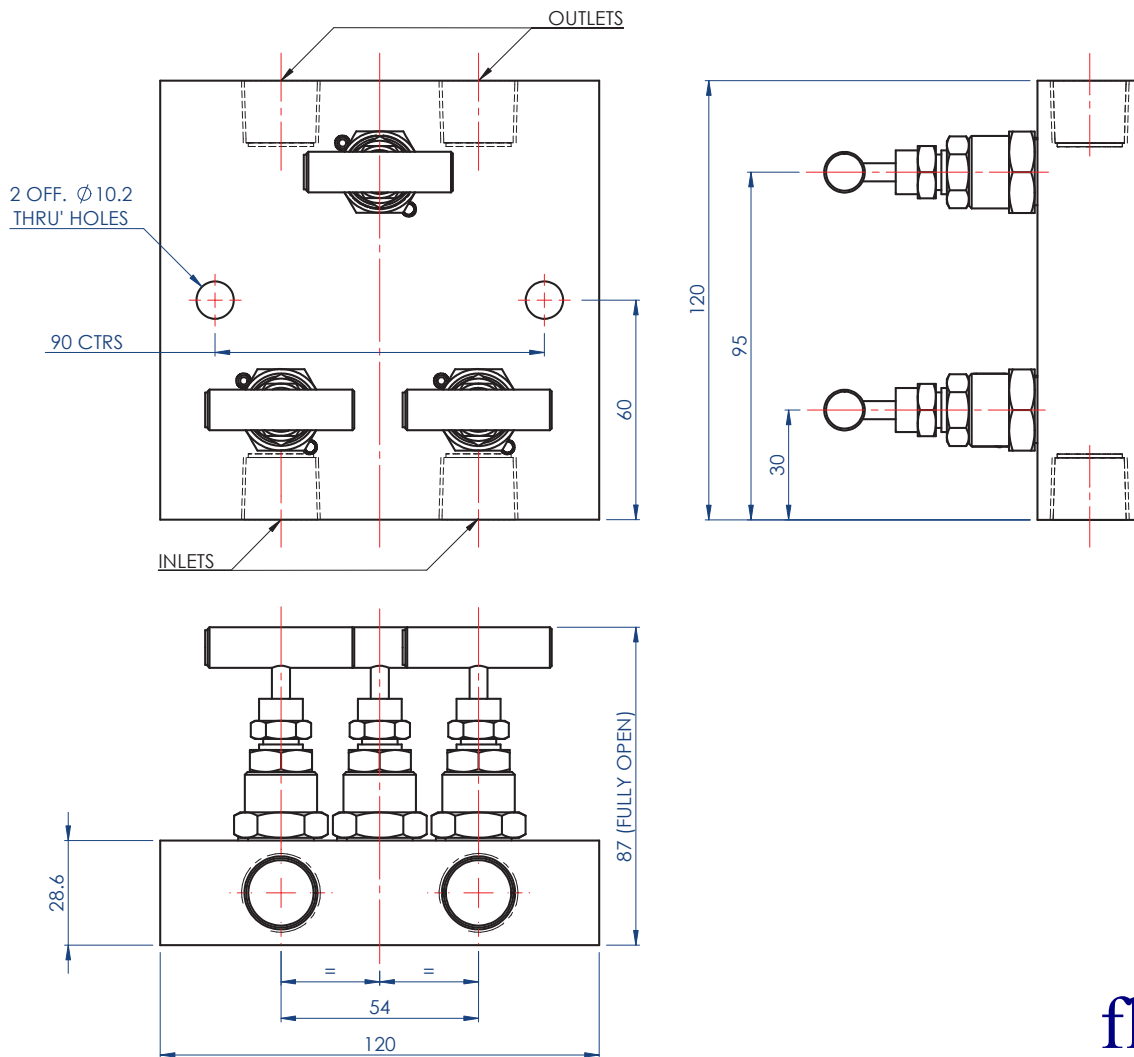
In normal operation the "isolate" valves are open while the "equalize" valve is closed.

This provides a differential pressure reading to the pressure gauge or transmitter. To zero the instrument, first close the downstream "isolate" valve then open the "equalize" valve and adjust the zero setting on the instrument.

Also available in a range of other materials and options (See HOW TO ORDER Data Sheet).



WEIGHT = 3.3 kg



fluidic

www.fluidic-ltd.co.uk
Motherwell: 01698 327372
Warrington: 01925 572401