

5 Simple
steps towards
temperature
compliance

1 Check your kit contents

Within your kit, please check that you have everything you need to get started.
Please contact your local supplier if you are missing any of the following items:



1 x Cloud Receiver
wall mounting bracket and four wall
mounting spacers (attached to the back
of the unit)*



3 x transmitters (inc. battery)
and wall mounting bracket (attached to the
back of the unit)*

*Up to seven additional transmitters can be ordered in
addition to this kit. Please check that these have been
included if you have ordered more.*



**1 x Power supply for Cloud
Receiver**



1 x Backup battery



1 x Ethernet Cable



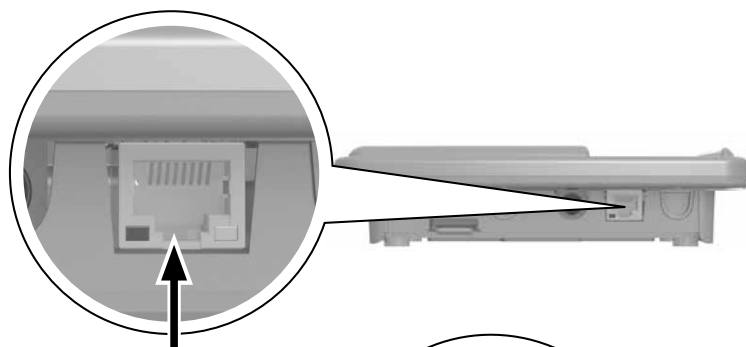
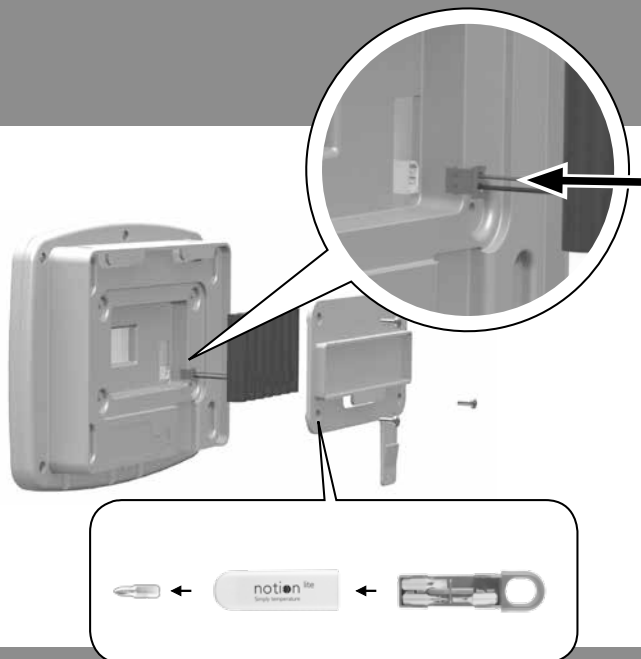
1 x Pocket Screwdriver

*For mounting instructions visit: www.help.notionlite.com

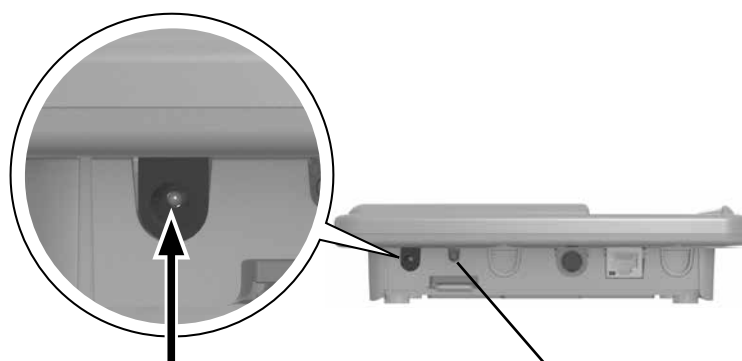
2 Set up your Cloud Receiver

Using the large crosshead screwdriver provided, remove the mounting bracket and battery cover at the rear of the receiver and insert the battery pack ensuring that you insert the battery connector to the receiver (as illustrated).

Then replace the cover.

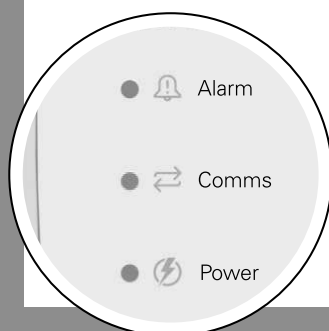


Attach the Ethernet cable to the receiver and to your network/router.



Using the relevant adapter, connect the power supply to the receiver and plug in.*

Please note: to mute alarms, press the button located underneath the unit (as illustrated).

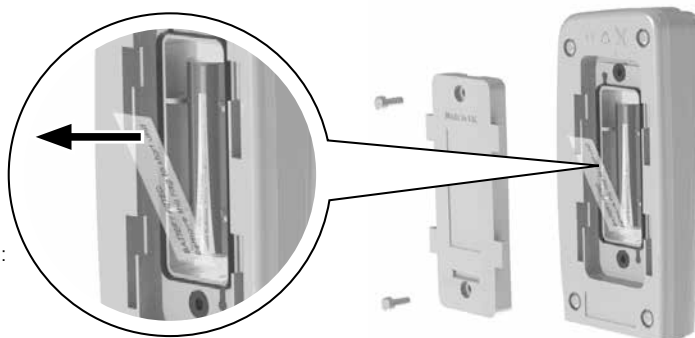


*The green Power LED will light up to signal the receiver is on. The yellow Comms LED will flash with initial power up. A solid yellow Comms LED will signify connection. If your yellow Comms LED continues to flash after 15 minutes your receiver cannot connect. Please visit www.help.notionlite.com. If you continue to see problems contact your local distributor.

3 Set up your transmitters

Using the large crosshead screwdriver provided, unscrew the rear cover and remove the battery tab.

Please note: Important information about replacement battery types can be found in: www.help.notionlite.com



4 Create and register your online account

Go to www.notionlite.com to create your account and follow the online instructions. You will need to keep your hardware with you during this process.

Please note; it may take up to 30 minutes for data to populate.



5 Position your hardware

You are now ready to position your transmitters. Mounting and positioning tips are available within the help files at www.help.notionlite.com

Getting the most out of your system

Now that your system is fully set-up you can configure your settings to your individual requirements using the software settings tab, such as:

- Alarm Thresholds
- Alarm Notifications by email and/or text message, and
- Graphical Axis Views.

For additional guidance on how to use the software and for Terms and Conditions, visit www.help.notionlite.com

- EN** Failure to carry out these instructions in the given order could prevent the system from functioning correctly. Should you require further assistance, please contact your local supplier.
- FR** L'échec pour réaliser ces instructions dans l'ordre donné pourrait empêcher le système de fonctionner correctement. Si vous avez besoin d'aide, veuillez contactez votre fournisseur local.
- DE** Um eine korrekte Funktion des Systems zu gewährleisten, sind diese Anweisungen streng in der angegebenen Reihenfolge auszuführen. Sollten Sie weitere Hilfe benötigen, kontaktieren Sie bitte ihren Lieferanten.
- NL** Indien de instructies niet in de aangegeven volgorde worden uitgevoerd, dan kan dit ervoor zorgen dat het systeem niet correct functioneert. Mocht u nog verdere hulp nodig hebben, neem dan contact op met uw lokale leverancier.
- IT** La mancata esecuzione di queste istruzioni nell'ordine dato potrebbe impedire al sistema di funzionare correttamente. Se avete bisogno di ulteriore assistenza, si prega di contattare il vostro fornitore locale.
- PT** O não cumprimento destas instruções na sequência devida pode impedir que o sistema funcione correctamente. Caso necessite de assistência adicional, por favor contacte o seu fornecedor local.
- ES** No seguir las instrucciones dadas en el orden correspondiente podría provocar que el sistema no funcione correctamente. Si necesita asistencia adicional, póngase en contacto con su distribuidor local.
- DA** Manglende overholdelse af disse anvisninger, i den givne rækkefølge, kan forhindre systemet i at fungere korrekt. Skulle du brug for yderligere support, skal du kontakte din lokale leverandør.
- NO** Niezastosowanie się do tych instrukcji wykonywa w podanej kolejno ci mo e zapobiec systemu z działa prawidłowo. Je li potrzebujesz dalszej pomocy, skontaktuj się z lokalnym dostawcą.
- PL** Niewykonywanie instrukcji w podanej kolejno ci mo e spowodowa nieprawidłowe działanie systemu. Je li potrzebujesz dalszej pomocy, skontaktuj się z lokalnym dostawcą.
- MY** Kegagalan untuk melaksanakan arahan mengikut susulan yang diwajibkan boleh mengakibatkan system ini berfungsi secara sempurna. Sekiranya anda memerlukan bantuan selanjutnya, sila hubungi pembekal tempatan anda.
- CH** 如果不执行这些指令, 在预定的顺序程序上可能会阻止系统正常运作。如果您需要进一步的说明, 请联系当地的供货商。
- JP** 取扱説明書通りの順序に従い実行しない場合、システムが正常に機能しないことがあります。詳しくは、お近くのサプライヤーにお問い合わせ下さい。
- LV** Nesp ja stenot š s instrukcijas dotaj krt b var nelaut sist mai korekti funkcion t. Ja jums nepieciešama turpm ka pal dz ba, l dzu, sazinieties ar viet jo pieg d t ju.
- AE** إذا جاتحت تنك اذ ! . حيحس لكشب لمعلا نم ماظنلا عنم نكمي بولطملا بيترتلابل تاملي لتلا ه ذه ذيفنت مدع
يلحمل دروملا لامتالا يجري ،ةدعاسملا نم ديزم



www.notionlite.com

Version 2